



Unsere Spannhülsenlagerungen sind alle kugellagert --- dadurch maximal spielfrei mit super präziser Führung!

Our revolving ends for bar feeders are all mounted with ball bearings --- thereby maximum free of play and super precise guidance!

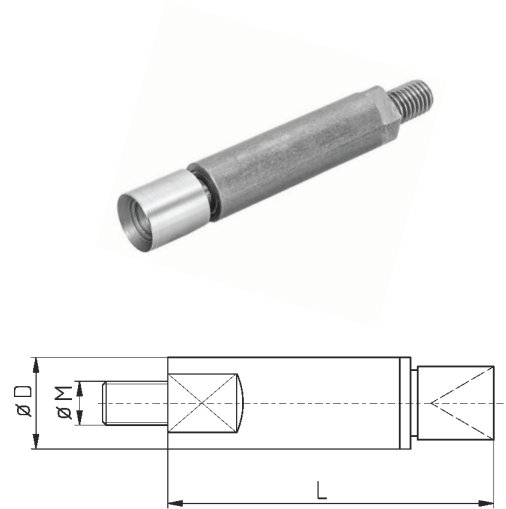
Drehende Enden für manuellen Stangenvorschub / Hydraulikrohre

*Revolving Ends
for Manual Bar Feeders*

Artikel-Nr. article-no.	D	M	L
* ESB0450	4,5	M3,5	35
* ESB0550	5,5	M4	46
ESB0700	7	M5	52
* ESB0750	7,5	M5	44
ESB0800	8	M5	48
* ESB0850	8,5	M5	52
* ESB0850L	8,5	M5	73
ESB1000	10	M6	49
ESB1100	11	M6	49
ESB1200	12	M6	49
* ESB1400	14	M10	80
* ESB1408	14	M8	80
ESB1500	15	M10	80
* ESB1508	15	M8	80
ESB1600	16	M10	80
ESB1608	16	M8	80
ESB2000	20	M10	88
ESB2500	25	M12	108
* ESB2800	28	M12	108
ESB3000	30	M12	108
* ESB3200	32	M12	108
* ESB3600	36	M12	108

* Ausverkaufsartikel

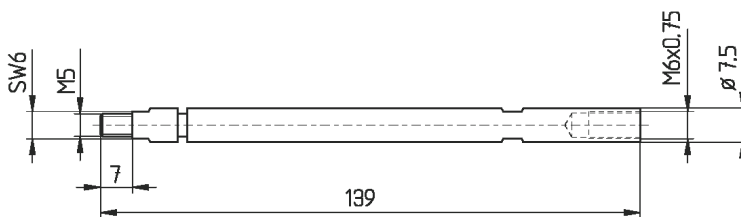
* sellout article



Kopf der Lagerung nur beispielhaft
Head of the revolving end only exemplified

Spannhülsenlagerungen D7 für IEMCA Lademagazine

*Revolving Ends
D7 for IEMCA Bar Feeders*

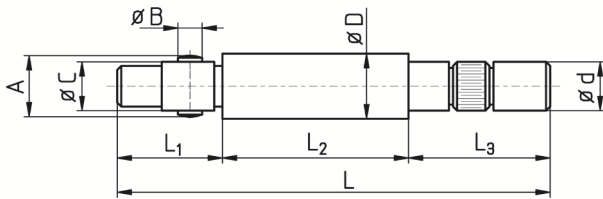


Artikel-Nr.
article-no.

SPHLD071

für FMB, IEMCA, BREUNING IRCO, TRAUB
Lademagazine

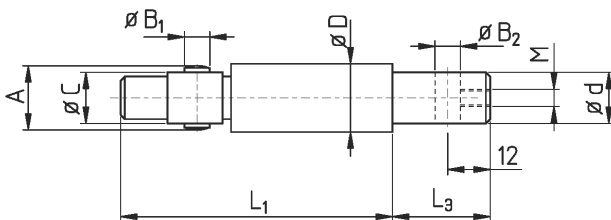
for FMB, IEMCA, BREUNING IRCO, TRAUB
Bar Feeders



Artikel-Nr. article-no.	d	D	A	B	C	L ₁	L ₂	L ₃	L
SPHLD10IR (special)	8	10,0	9,8	4	7	26,5	43,5	30	100
SPHLD105IR (special)	8	10,5	9,8	4	7	26,5	43,5	30	100
SPHLD10	8	10	9,8	4	7	26,5	43,5	30	100
SPHLD12	8	12,3	11,8	4	8	26,5	43,5	30	100
SPHLD13	8	13	11,8	4	8	26,5	43,5	30	100
SPHLD15	12	15	14,8	6	11	26,5	43,5	30	100
SPHLD16	12	16	15,8	6	11	26,5	43,5	30	100
SPHLD18	12	18	17,8	6	11	26,5	43,5	30	100
SPHLD20	17	20	19,8	8	14	40,5	45,5	30	116
SPHLD22	17	22	21,8	8	14	40,5	45,5	30	116
SPHLD23	17	23	21,8	8	14	40,5	45,5	30	116
SPHLD25	20	25	24,8	8	20	43	46	30	119
SPHLD28	20	28	24,8	8	20	43	46	30	119
SPHLD30	20	30	29,8	8	20	43	46	30	119
SPHLD32	20	32	31,8	8	20	43	46	30	119
SPHLD36	20	36	35,8	8	20	43	46	30	119
SPHLD42	20	42	35,8	8	20	43	46	30	119
SPHLD52	20	52	35,8	8	20	43	46	30	119

Spannhülsenlagerungen
für LNS Mini-Sprint S2

Revolving Ends
for LNS Mini-Sprint S2



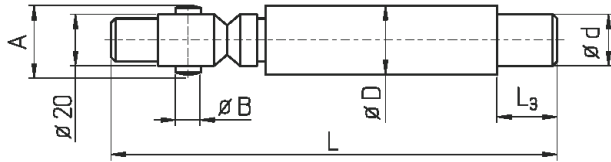
Artikel-Nr. article-no.	d	D	A	B ₁ / B ₂	C	L ₁	L ₃	M
SPHL10LNS	8	10	10	4	7	67	30	M4
SPHL12LNS	8	12	12	4	8	67	30	--
SPHL15LNS	12	15	15	6	11	67	30	M5
SPHL18LNS	12	18	18	6	11	70	30	M5
SPHL20LNS	17	20	20	8	14	81	30	M8
SPHL25LNS	20	25	25	8	20	85,5	30	M8
SPHL36LNS	30	36	36	8 / --	20	158	40	--
SPHL50LNS	42	50	--	--	20	158	50	--

"TURBO"

für FMB, LNS, BREUNING IRCO Lademagazine

"TURBO"

for FMB, LNS, BREUNING IRCO Bar Feeders



Artikel-Nr. article-no.	d	D	A	B	L ₃	L
SPHLTD25 *	20	25	24,8	8	40	197
SPHLTD28 *	25	28	25,8	8	40	197
SPHLTD30 *	25	30	25,8	8	40	197
SPHLTD32 *	25	32	31	8	40	197
SPHLTD34 *	30	34	31	8	40	197
SPHLTD36 *	30	36	35	8	40	207
SPHLTD38	30	38	-	-	40	207
SPHLTD40	33	40	-	-	50	207
SPHLTD42	33	42	-	-	50	207
SPHLTD45	33	45	-	-	50	207
SPHLTD50	42	50	-	-	50	207
SPHLTD60	51	60	-	-	75	232
SPHLTD63	51	63	-	-	75	232
SPHLTD65	51	65	-	-	75	232
SPHLTD70 **	51	70				
SPHLTD80 **	51	80				

* Verwendbar für Spannhülsen "Turbo" und mit Querstift
 **Auf Anfrage

* Useable for bar feeder collets "Turbo" and pinned type
 ** On request

"TURBO"

für TORNOS Lademagazine

"TURBO"

for TORNOS Bar Feeders

Artikel-Nr. article-no.	d	D	A	B	L ₃	L
SPHLTR32	22	32	31	8	30	192
SPHLTR36	25	36	35	8	30	192

für TORNOS, ROBOBAR Lademagazine

for TORNOS, ROBOBAR
Bar Feeders

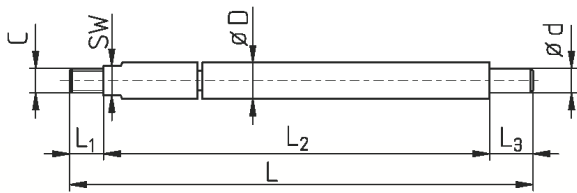


Bild 1

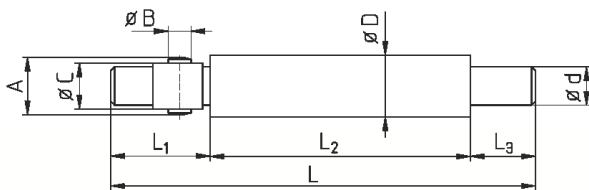


Bild 2



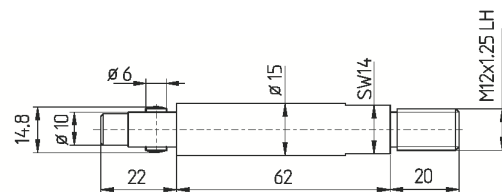
Artikel-Nr. article-no.	d	D	A	B	C	L ₁	L ₂	L ₃	L	Bild picture
SPHLD05R	M3	5,5	-	-	M4	7	78	8	93	1
SPHLD07R	5	7,5	-	-	M5	7	78	16	101	1
SPHLD10R	7	10,5	9,8	4	7	27	73	16	116	2
SPHLD12R	8	12	11,8	4	8	28	72	16	115	2
SPHLD16R	10	16	15,5	6	11	26	116	16	158	2
SPHLD18R	10	18	17,8	6	11	28	116	16	159	2
SPHLD21R	14	20,5	19,8	8	14	40	110	20	169	2
SPHLD25R	20	25	24,8	8	20	42	117	22	181	2
SPHLD26R	20	26	24,8	8	20	43	114	22	179	2

für CAV Lademagazine

for CAV Bar Feeders

Artikel-Nr.
article-no.

SPHL15CAV

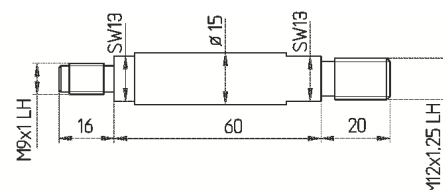


für FEDEK Lademagazine / LNS ASIA

for FEDEK Bar Feeders / LNS ASIA

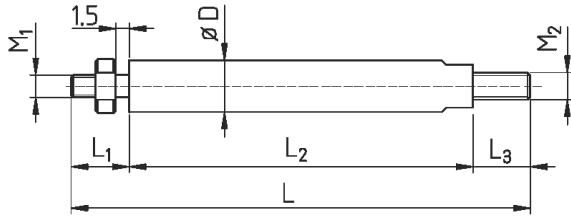
Artikel-Nr.
article-no.

SPHL15FED



für BECHLER, TORNOS Lademagazine

for BECHLER, TORNOS
Bar Feeders



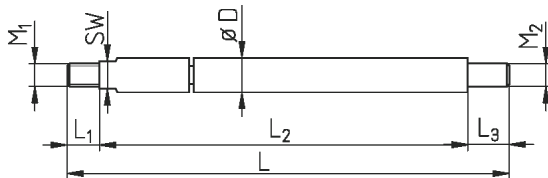
Artikel-Nr. article-no.	D	M ₁	M ₂	L ₁	L ₂	L ₃	L	Lademagazin bar feeder
SPHLD10B1	10	M5	M6	14	68	14	96	BECHLER
SPHLD10B2	10	M5	M6	15	56	14	85	BECHLER
ERB0760	7	M4	M5	11,5	39,5	9	60	BECHLER
ERT0450	4,5	M3	M3 **	9	54	8 **	62	TORNOS
ERT0550	5,5	M3	M3 **	8	55	8 **	63	TORNOS
ERT0700	7	M4	M5	11,5	41,5	10	63	TORNOS
ERT0750	7,5	M4	M5	11	42	10	63	TORNOS
ERT0850	8,5	M5	M5	12	41,5	10	63,5	TORNOS
ERT1050	10,5	M6	M6	14	45	11	70	TORNOS

** Innengewinde

** internal thread

für GAUTHIER, IEMCA, LNS Lademagazine

for GAUTHIER, IEMCA, LNS
Bar Feeders



Artikel-Nr. article-no.	D	M ₁	M ₂	SW	L ₁	L ₂	L ₃	L	Lademagazin bar feeder
SPHLD05GS	5,0	M4	M4	4	7	72,5	10,5	91	GAUTHIER / IEMCA
SPHLD05G *	5,5	M4	M4	4	7	73,5	10	91	GAUTHIER / IEMCA
SPHLD07GS	7,0	M5	M5	6	7	79	11	97	GAUTHIER
SPHLD07G *	7,5	M5	M5	6	7	79	11	97	GAUTHIER
SPHLD07SLNS	7,0	M4	M5	6	8	118	11	131	LNS Mini Sprint
SPHLD07LNS *	7,5	M4	M5	6	8	115	8	131	LNS Mini Sprint
SPHLD12LNS	12	M6	M6	9				72	LNS Mini Sprint

* Standardausführung für Kanal D5 bzw. D7

* Standard version for channel D5 resp. D7

für TRAUB, FMB
Lademagazine

for TRAUB, FMB
Bar Feeders

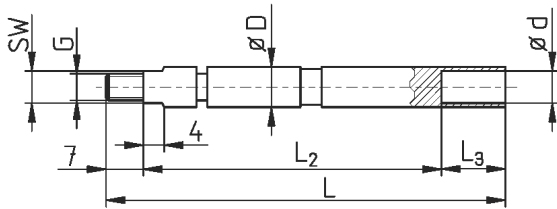


Bild 1

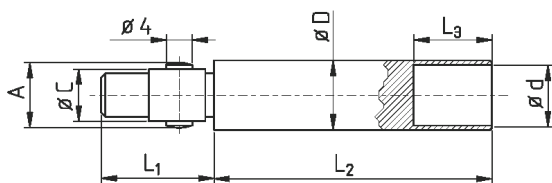


Bild 2

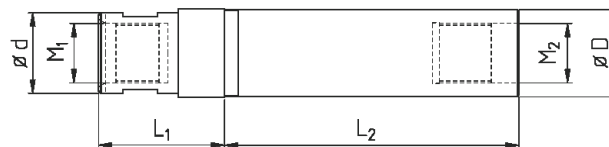


Artikel-Nr. article-no.	D	Bild picture	G	d	SW	L ₂	L ₃	L	Lademagazin bar feeder
SPHLD05T	5,5	1	M4	4,5	4	56	12	75	TRAUB / FMB
SPHLD07T	7,5	1	M5	6,5	6	63	15	85	TRAUB / FMB

Artikel-Nr. article-no.	D	Bild picture	A	C	d	L ₂	L ₃	L	Lademagazin bar feeder
SPHLD10T	10	2	9,9	7	9	24	61	18	TRAUB
SPHLD12T	12	2	11,9	8	11	24	61,5	18	TRAUB

für IEMCA Lademagazine

for IEMCA Bar Feeders



Artikel-Nr. article-no.	D	d	L ₁	L ₂	M ₁	M ₂
SPHLDI25	25	23	40	81	M17x1	M17x1
SPHLDI30	30	30	49	91	M25x1,5	M20x1
SPHLDI40	40	45	51	114	M25x1,5	∅ 30
SPHLDI65	65	39	41	219	M25x1,5	M50x2 (außen / external)

für IEMCA, EDGE, BOSS
Lademagazine

for IEMCA, EDGE, BOSS
Bar Feeders

Bild 1

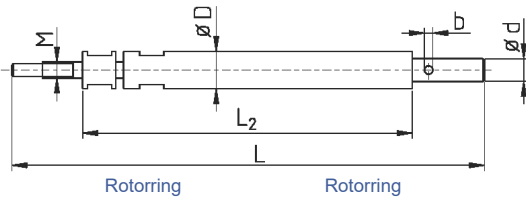


Bild 2

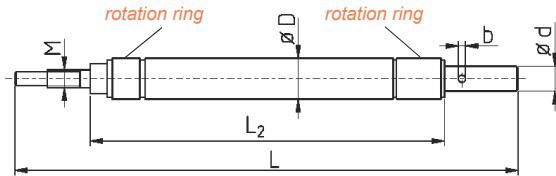


Bild 3

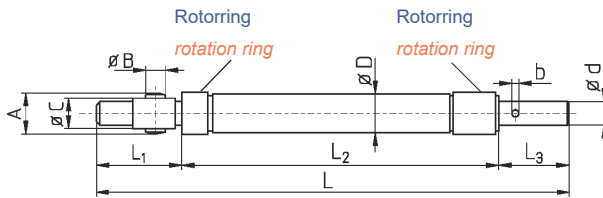
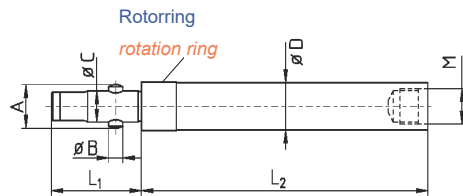


Bild 4



Artikel-Nr. article-no.	D	Bild picture	d	L ₂	L	M	b
SPHL112	12	1	8	109	172	M7x0,75	3
SPHL115	15	2	12	132,5	195	M8x1	4
SPHL116	16	2	12	132,5	195	M8x1	4
SPHL118	18	2	12	132,5	195	M8x1	4
SPHL119	19	2	12	132,5	195	M8x1	4
SPHL120	20	2	14	132,5	210	M10x1	4
SPHL123	23	2	14	132,5	210	M10x1	4
SPHL125	25	2	14	132,5	210	M10x1	4
SPHL127	27	2	17	132,5	210	M10x1	5

Für Spannhülsen DI
original IEMCA

For bar feed collets
original IEMCA

Artikel-Nr. article-no.	D	Bild picture	d	M	L ₁	L ₂	L ₃	L	A	B	C	b
SPHL12IE	12	3	8	--	27	113	30	12	4	8	3	
SPHL15IE	15	3	12	--	26	127	35	15	6	11	4	
SPHL16IE	16	3	12	--	26	127	35	16	6	11	4	
SPHL18IE	18	3	12	--	26	127	35	18	6	11	4	
SPHL20IE	20	3	14	--	40	125	35	20	8	14	--	
SPHL23IE	23	3	14	--	37	125	33	20	8	14	--	

Für Spannhülsen mit
Querloch

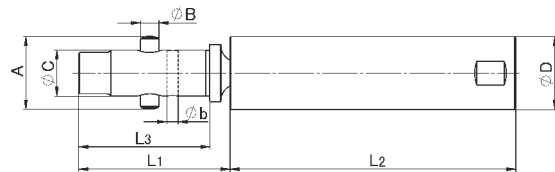
For bar feed collets
pinned type

* für IEMCA SIR Mehrspindler

* for IEMCA SIR multispindle bar feeder

für INDEX MBL Lademagazine

for INDEX MBL Bar Feeders



Artikel-Nr. article-no.	A	B	C	D	b	L ₁	L ₂	L ₃
SPHL18MBL	17,8	6	11	18	4	48	100,5	42,9
SPHL23MBL	21,8	8	14	23	4	66,6	94,5	59,6
SPHL32MBL	31,6	8	20	32	5	66	124,5	57

für IEMCA, CUCCHI Lademagazine

for IEMCA, CUCCHI Bar Feeders

IEMCA					
Artikel-Nr. article-no.	D	L	F	d	Bild picture
V516.007	7,5	126	M6x0,75	M5x0,5	1
V516.010	10	113	M8x1	M6x0,75	1
V516.012	12	116	M10x1	M7x0,75	1
V516.015	15	121	M12x1,5	M8x1	1
V516.020	20	133	M14x1,5	M10x1	1
V516.025	25	133	M14x1,5	M10x1	1
* V516.030	30	135	M14x1,5	M10x1	1

* Ausverkaufsartikel

* sellout article

CUCCHI					
Artikel-Nr. article-no.	D	L	F	d	Bild picture
* V517.010	10	107	M7x1	M6x0,75	2
V517.012	12	107	M8x1,25	M7x0,75	2
V517.014	14	107	M10x1,5	M8x1	2
* V517.016	16	107	M10x1,5	M8x1	2
* V517.019	19	118	M12x1,75	M10x1	2
* V517.040	40	61	M28x1,5	M25x1,5	3

* Ausverkaufsartikel

* sellout article

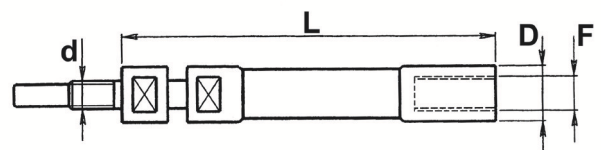


Bild 1

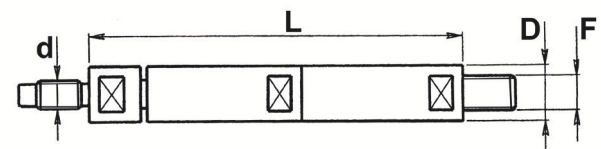


Bild 2

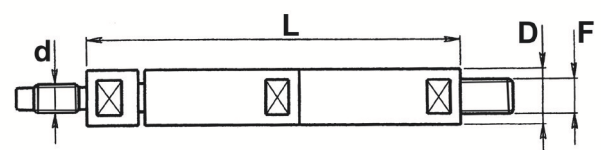


Bild 3

Drehende Enden

Revolving Ends

Artikel-Nr. article-no.	D	d	L	Fahnenstange pushrod
* V516.107	14,5	12	23	V516.101/102
* V516.109	24	20	38	V516.105/106/201/202

* Ausverkaufsartikel

* sellout article

