

TORNOS



Höhenverstellbare Werkzeughalter mit Mikrometerfeineinstellung 0,02

High Adjustable Tool Holders Adjusted by Micrometer Screw 0,02

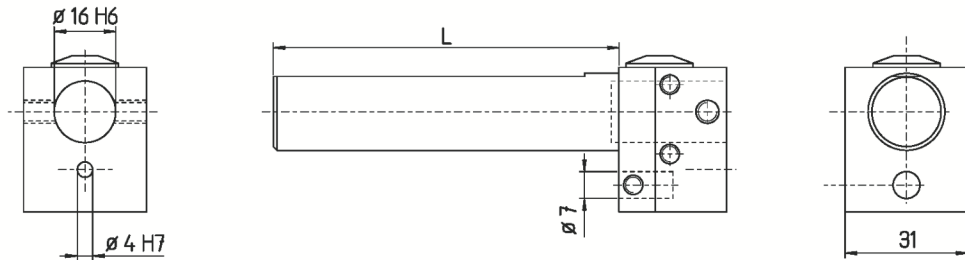


Bild 1: Mit Spannfläche (WD)
With clamping flat (WD)

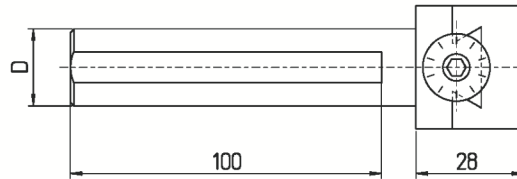
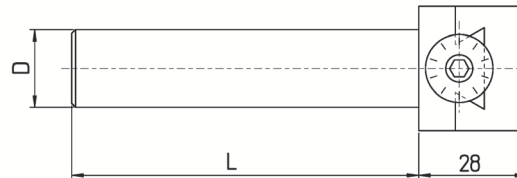


Bild 2: Ohne Spannfläche
Without clamping flat



Einsätze

Inserts

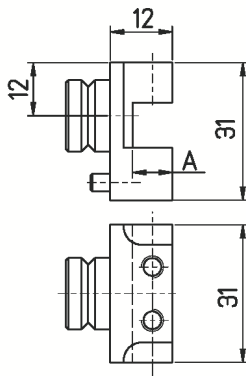


Bild 3: Vierkant-Aufnahme
Square adapter

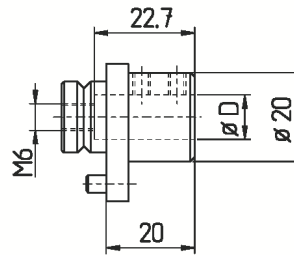


Bild 4: Weldon-Aufnahme
Weldon adapter

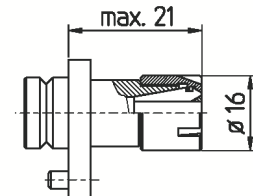


Bild 5: ER11 / ER11M
ER-collet adapter

Halter - holders			
Artikel-Nr. article-no.	D	L	Bild
* U236-16WD	16	60	2
* U236-19	3/4"	110	2
* U236-20WD	20	110	2
* U236-20K	20	70	2
* U236-20T	20	140	2
* U236-20TWD	20	140	1
* U236-22WD	22	110	2
* U236-25WD	25	110	2
* U236-28WD	28	110	2

* Ausverkaufsartikel

Einsätze - inserts			
Artikel-Nr. article-no.	A	D	Bild
* U236-E88	8 x 8		3
* U236-E1010	10 x 10		3
* U236-W08		8	4
* U236-W10		10	4
* U236-W12		12	4
* U236-ER11			5
* U236-ER11M			5

* sellout article