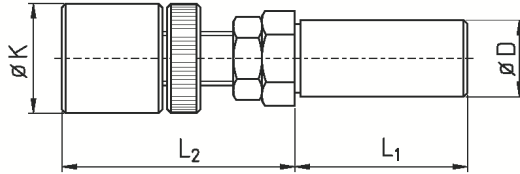


# Werkstoffanschläge *Revolving Bar Stops*



## Werkstoffanschläge, mitlaufend

## Revolving Bar Stops



Längenverstellbar  
Mit 2 stabilen Wälzlagern (axial - radial) gelagert

Adjustable length  
With 2 solid ball bearings (axial - radial)

### Schlanke Ausführung (Gewindestange M12) - slim version (thread bar M12)

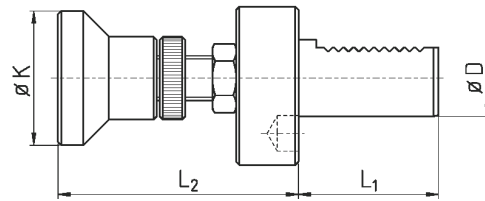
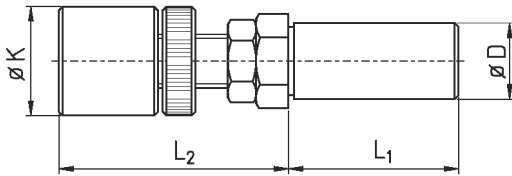
Artikel-Nr. article-no.	K	D	L <sub>1</sub>	L <sub>2</sub>	Gewindestange thread bar	Alte Bestell / INDEX-Nr. old order / INDEX-no.
* STK221646-K	22	16	46	39 - 79	M12x1	U150-16
STK221941-K	22	3/4"	41	41 - 79	M12x1	U150-10 = W12.040.00
* STK221932-KTraub	22	3/4"	32	57 - 79	M12x1	
* STK22V2040-K	22	V20	40	46 - 79	M12x1	
* STK222041-K	22	20	41	41 - 79	M12x1	U150-11
* STK232041-K	23	20	41	41 - 79	M12x1	
STK261941-K	26	3/4"	41	41 - 79	M12x1	U155-10 = W12.041.00
STK261932-KTraub	26	3/4"	32	57 - 79	M12x1	
* STK262041-K	26	20	41	41 - 79	M12x1	U155-11

\* Ausverkaufsartikel

\* sellout article

## Werkstoffanschläge, mitlaufend

## Revolving Bar Stops



Ausführung mit VDI-Schaft - Version with VDI-shank

Längenverstellbar

Mit 2 stabilen Wälzlagern (axial - radial) gelagert

Adjustable length

With 2 solid ball bearings (axial - radial)

Standard Ausführung (Gewindestange M14) - standard version (thread bar M14)

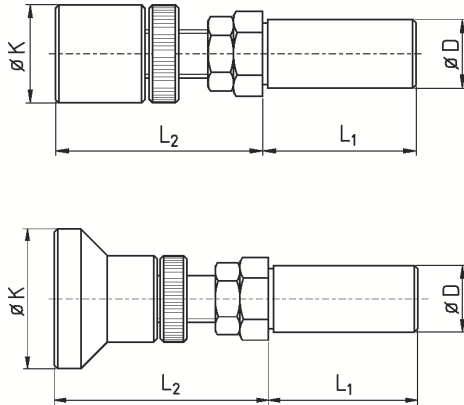
Artikel-Nr. article-no.	K	D	L <sub>1</sub>	L <sub>2</sub>	Gewindestange thread bar	Alte Bestell / INDEX-Nr. old order / INDEX-no.
* STM221939-M	22	3/4"	39	45 - 99	M14x1	U150-10b
* STM221939-L	22	3/4"	39	45 - 119	M14x1	
* STM222041-K	22	20	41	43 - 79	M14x1	
* STM22V2548-K	22	VDI 25	48	57 - 79	M14x1	
* STM222646-K	22	1"	46	43 - 79	M14x1	
* STM231939-L	23	3/4"	39	45 - 119	M14x1	
* STM232546-M	23	25	46	43 - 99	M14x1	
* STM232646-L	23	1"	46	43 - 119	M14x1	
STM261932-LTraub	26	3/4"	32	59 - 119	M14x1	
* STM261939-K	26	3/4"	39	45 - 79	M14x1	
* STM261939-M	26	3/4"	39	45 - 99	M14x1	U155-10b
* STM261939-L	26	3/4"	39	45 - 119	M14x1	
* STM262646-M	26	1"	46	43 - 99	M14x1	
* STM262646-L	26	1"	46	43 - 119	M14x1	
* STM341939	34	3/4"	46	58 - 100	M14x1	
* STM342041	34	20	41	56 - 100	M14x1	
STM342546	34	25	46	56 - 100	M14x1	U150-19
STM342646	34	1"	46	56 - 100	M14x1	U150-20 = W32.041.00
* STM392646	39	1"	46	56 - 100	M14x1	U150-20S
STM432646	43	1"	46	56 - 100	M14x1	U150-20T
* STM562546	56	25	46	56 - 100	M14x1	

\* Ausverkaufsartikel

\* sellout article

## Werkstoffanschläge, mitlaufend

## Revolving Bar Stops



Version mit großem Kopf  $\varnothing$  - Version with large head  $\varnothing$

Längenverstellbar

Mit 2 stabilen Wälzlagern (axial - radial) gelagert

Adjustable length

With 2 solid ball bearings (axial - radial)

### Stabile Ausführung (Gewindestange M16) - solid version (thread bar M16)

Artikel-Nr. article-no.	K	D	$L_1$	$L_2$	Gewindestange thread bar	Alte Bestell / INDEX-Nr. old order / INDEX-no.
* STG342041-K	34	20	41	56 - 102	M16x1	
* STG342544-K	34	25	44	58 - 102	M16x1	
* STG342644-K	34	1"	44	58 - 102	M16x1	
* STG342644-L	34	1"	44	58 - 139	M16x1	
* STG343160-K	34	1 1/4"	60	60 - 102	M16x1	U150-30
STG343260-K	34	32	60	60 - 102	M16x1	U150-31
* STG343260-L	34	32	60	60 - 139	M16x1	
* STG344065-K	35	40	50	65 - 102	M16x1	U150-40
STG393260-K	39	32	60	60 - 102	M16x1	
* STG432041-K	43	20	41	56 - 102	M16x1	
* STG432644-K	43	1"	44	58 - 102	M16x1	
* STG432644-L	43	1"	44	58 - 139	M16x1	
* STG562544-K	56	25	44	58 - 102	M16x1	U155-19
* STG562644-K	56	1"	44	58 - 102	M16x1	U155-20 = W32.051.00
* STG563160-K	56	1"	44	60 - 102	M16x1	U155-30 = W52.051.00
* STG563260-K	56	32	60	60 - 102	M16x1	U155-31
* STG564065-K	56	40	65	65 - 102	M16x1	U155-40

\* Ausverkaufsartikel

\* sellout article

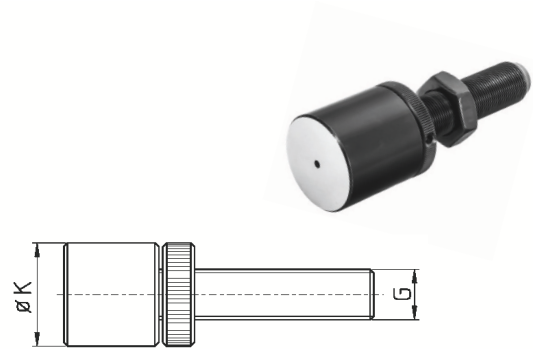
## Köpfe mit Kontermutter und Gewindestange

## Heads with Counter Nut and Thread Bar

Artikel-Nr. article-no.	Gewinde G thread	K
* STOM1022	M10x1	22
* STOM1026	M10x1	26
* STOM1222	M12x1	26
* STOM1223	M12x1	23
* STOM1226	M12x1	26
* STOM1426	M14x1	26
* STOM1434	M14x1	34
* STOM1634	M16x1	34
* STOM1643	M16x1	43
* STOM1656	M16x1	56

\* Ausverkaufsartikel

\* sellout article



## Werkstoffanschläge, mitlaufend mit Wechseleinsätzen

## Revolving Bar Stops with Interchangeable Disks

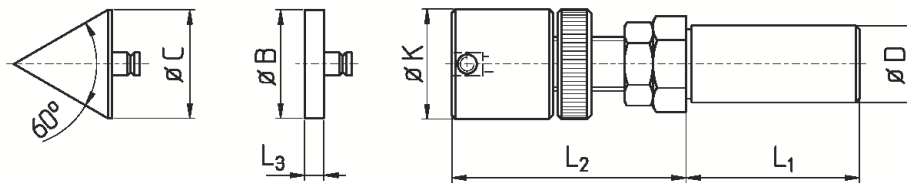


Bild 3

Bild 2

Bild 1

Längenverstellbar

Anschlagkopf auswechselbar

Mit 2 stabilen Wälzlagern (axial - radial) gelagert

Adjustable length

Interchangeable head

With 2 solid ball bearings (axial - radial)

Artikel-Nr. article-no.	Bild pic	K	D	$L_1$	$L_2$	Gewindestange thread bar
* STUP231646	1	23	16	46	44 - 84	M12x1
* STUP231941	1	23	3/4"	41	46 - 84	M12x1
* STUP232041-K	1	23	20	41	48 - 84	M14x1
* STUP261646	1	26	16	46	44 - 84	M12x1
* STUP261941	1	26	3/4"	41	46 - 84	M12x1
* STUP262041-K	1	26	20	41	48 - 84	M14x1
* STUP262546-K	1	26	25	46	48 - 84	M14x1
* STUP262646-K	1	26	1"	46	48 - 84	M14x1

### Aufsteckplatten, Zentrierspitzen Disks, Centering Tapers

Artikel-Nr. article-no.	Bild pic	B	C	$L_3$	
* STUP150/16	2	16		5	Aufsteckplatte - Interchangeable disk
* STUP150/25	2	25		5	Aufsteckplatte - Interchangeable disk
* STUP155/60°	3		25		Zentrierspitze 60° - Centering taper 60°

\* Ausverkaufsartikel

\* sellout article