

Führungsbüchsen Anzugsmuttern

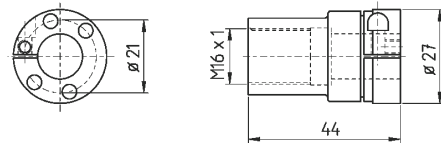
Guide Bush Nuts



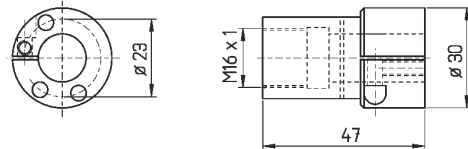
Führungsbüchsen-Anzugsmuttern CITIZEN

Guide Bush Nuts CITIZEN

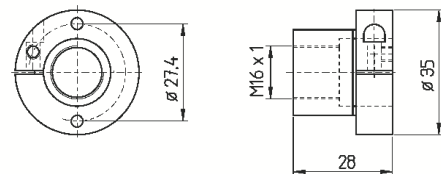
| CITIZEN B12 | | |
|----------------------------|--|------------------------------|
| Artikel-Nr. article-no. | | Original Nr. original no. |
| FVM.B12 | | |



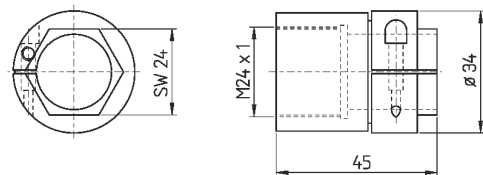
| CITIZEN | | |
|----------------------------|--|------------------------------|
| Artikel-Nr. article-no. | | Original Nr. original no. |
| FVM.M16 | | 4156300250 |



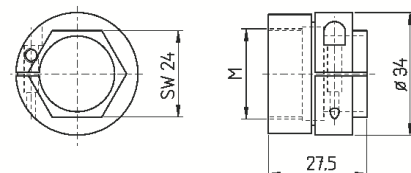
| CITIZEN | | |
|----------------------------|--|------------------------------|
| Artikel-Nr. article-no. | | Original Nr. original no. |
| FVM.F853 | | |



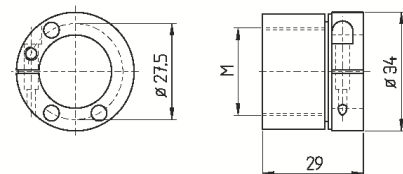
| CITIZEN L16 | | |
|----------------------------|--|------------------------------|
| Artikel-Nr. article-no. | | Original Nr. original no. |
| FVM.L16 | | |



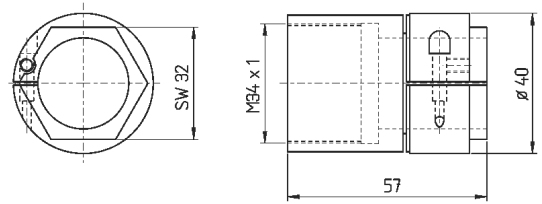
| CITIZEN L20 | | |
|--|---------|------------------------------|
| Artikel-Nr. article-no. | M | Original Nr. original no. |
| FVM.L20 | M25 x 1 | |
| FVM.L20-M27 | M27 x 1 | |
| mit Gew. M27 x 1 für vergrößerten Durchlass bis 23mm | | |
| <i>enlarged to 23 mm admission, thread M27 x 1</i> | | |



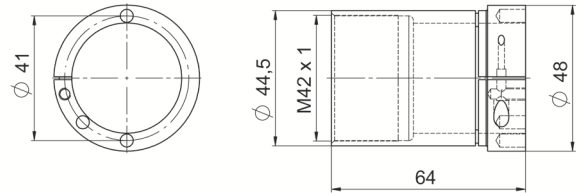
| CITIZEN M20 / A20 | | |
|--|---------|------------------------------|
| Artikel-Nr. article-no. | M | Original Nr. original no. |
| FVM.M20 | M25 x 1 | 592-128 |
| FVM.M20-M27 | M27 x 1 | |
| mit Gew. M27 x 1 für vergrößerten Durchlass bis 23mm | | |
| <i>enlarged to 23 mm admission, thread M27 x 1</i> | | |



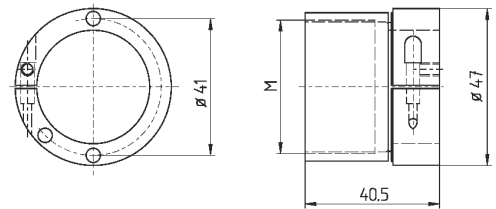
| CITIZEN M25 / L25 | |
|----------------------------|--|
| Artikel-Nr. article-no. | |
| FVM.L25 | |



| CITIZEN M332 | |
|----------------------------|-------|
| Artikel-Nr. article-no. | M |
| FVM.M332-M42 | M42x1 |



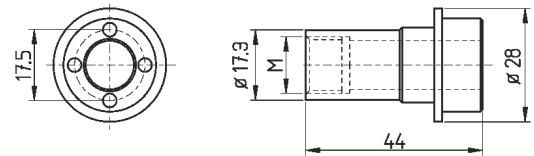
| CITIZEN A32 | |
|---|---------|
| Artikel-Nr. article-no. | M |
| FVM.A32 | M40 x 1 |
| FVM.A32-M42 | M42 x 1 |
| mit Gew. M42 x 1 für vergrößerten Durchlass bis 36 mm <i>enlarged to 36 mm admission, thread M42 x 1</i> | |



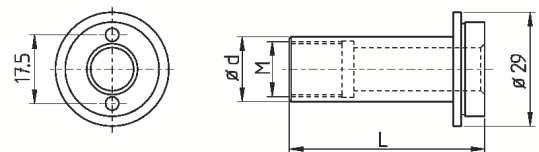
Führungsbüchsen-Anzugsmuttern STAR

Guide Bush Nuts STAR

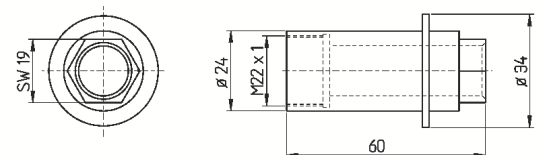
| STAR SR10J | |
|----------------------------|---------|
| Artikel-Nr. article-no. | M |
| FVM.SR10J-M14 | M14 x 1 |
| FVM.SR10J-M15 | M15 x 1 |



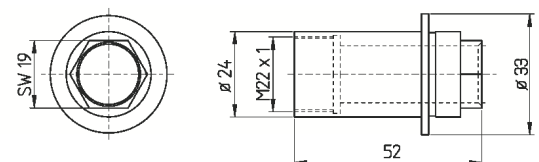
| STAR SW7 | | | |
|----------------------------|----|------|------------|
| Artikel-Nr. article-no. | L | d | M |
| FVM.38701060 | 51 | 15 | M10 x 0,75 |
| FVM.38701220 | 50 | 16,5 | M14 x 1 |
| FVM.38701330 | 45 | 16,5 | M14 x 1 |



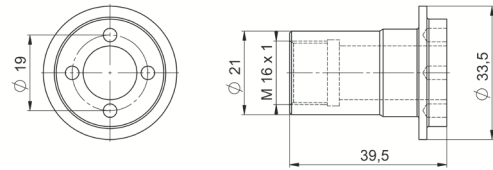
| STAR RNC16 - 10017 | |
|----------------------------|--|
| Artikel-Nr. article-no. | |
| FVM.RNC16 | |



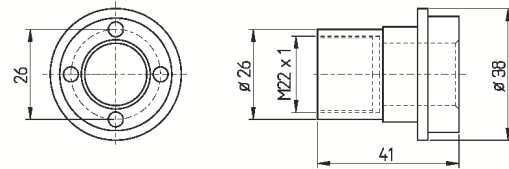
| STAR SST16 | |
|----------------------------|--|
| Artikel-Nr. article-no. | |
| FVM.SST16 | |



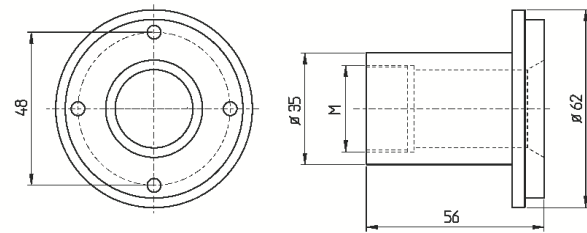
| STAR SB12R | |
|----------------------------|---------|
| Artikel-Nr. article-no. | M |
| FVM.SB12R | M16 x 1 |



| STAR SB16 | |
|----------------------------|--|
| Artikel-Nr. article-no. | |
| FVM.SB16 | |

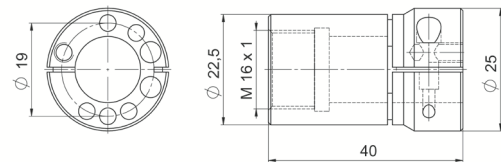


| STAR SV20 | |
|----------------------------|---------|
| Artikel-Nr. article-no. | M |
| FVM.SV20 | M25 x 1 |
| FVM.SV20-M27 | M27 x 1 |
| erweitert - enlarged to | M27 x 1 |

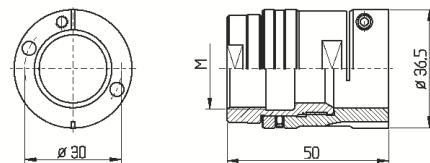


| STAR SR20J / SR20RIII | |
|----------------------------|---------|
| Artikel-Nr. article-no. | M |
| FVM.SR20J | M25 x 1 |
| FVM.SR20J-M27 | M27 x 1 |
| erweitert - enlarged to | M27 x 1 |

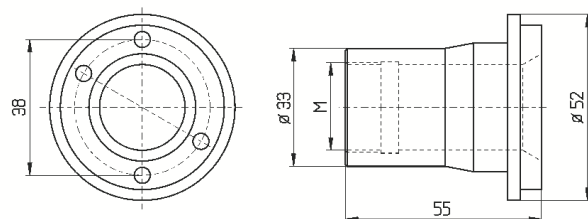
| STAR SW12RII | |
|----------------------------|---------|
| Artikel-Nr. article-no. | M |
| FVM.SW12RII | M16 x 1 |



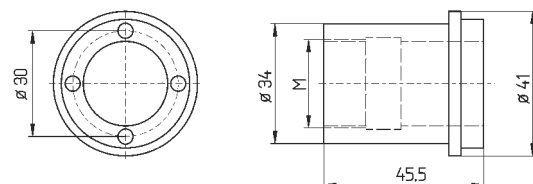
| STAR SW20 / SR20RIV | | |
|--|---------|---------|
| Artikel-Nr. article-no. | M | |
| FVM.SW20 | M25 x 1 | |
| FVM.SW20-M27 * | M27 x 1 | |
| FVM.SW20-2 | Type 2 | M25 x 1 |
| FVM.SW20-M27-2 * | Type 2 | M27 x 1 |
| FVM.SW20-3 | Type 3 | M25 x 1 |
| FVM.SW20-M27-3 * | Type 3 | M27 x 1 |
| Einsatz von Typ 2 nur mit original Umbaukit von STAR möglich - use of type 2 is possible with original kit from STAR only. | | |
| * erweitert - enlarged to M27 x 1 | | |



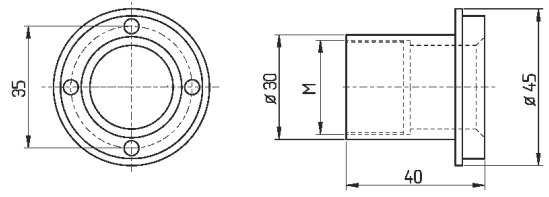
Typ 2:
Type 2:



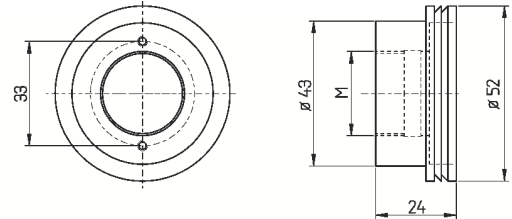
Typ 3:
Type 3:



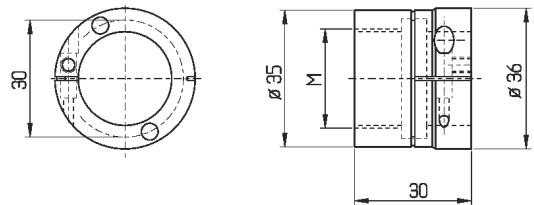
| STAR SR20 | |
|--------------------------------|---------|
| Artikel-Nr. article-no. | M |
| FVM.SR20 | M25 x 1 |
| FVM.SR20-M27 | M27 x 1 |
| erweitert - <i>enlarged to</i> | M27 x 1 |



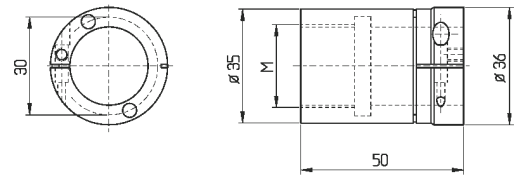
| STAR SB20 | |
|--------------------------------|---------|
| Artikel-Nr. article-no. | M |
| FVM.SB20 | M25 x 1 |
| FVM.SB20-M27 | M27 x 1 |
| erweitert - <i>enlarged to</i> | M27 x 1 |



| STAR SB20RE | |
|--------------------------------|---------|
| Artikel-Nr. article-no. | M |
| FVM.SB20RE | M25 x 1 |
| FVM.SB20RE-M27 | M27 x 1 |
| erweitert - <i>enlarged to</i> | M27 x 1 |

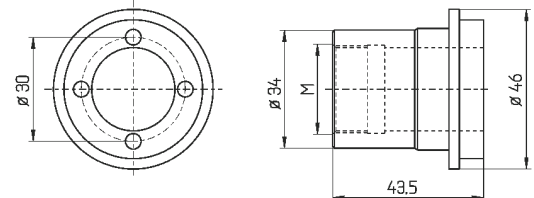


| STAR SB20RG | |
|----------------------------|---------|
| Artikel-Nr. article-no. | M |
| FVM.SB20RG | M25 x 1 |
| FVM.SB20RG-M27 * | M27 x 1 |

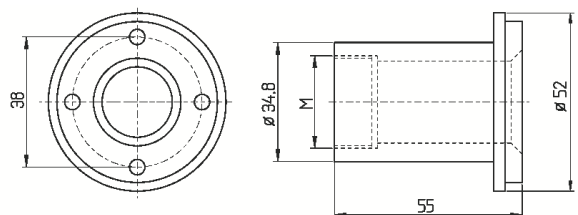


| Ab - from S/N 540: | |
|----------------------------------|---------|
| FVM.SB20RG-new | M25 x 1 |
| FVM.SB20RG-M27-new * | M27 x 1 |
| * erweitert - <i>enlarged to</i> | M27 x 1 |

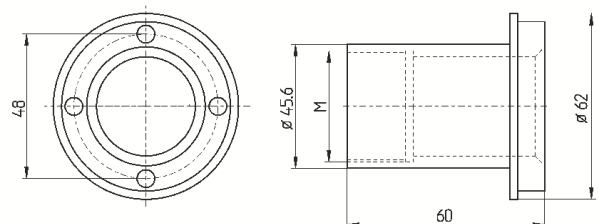
Typ "new":
Type "new":



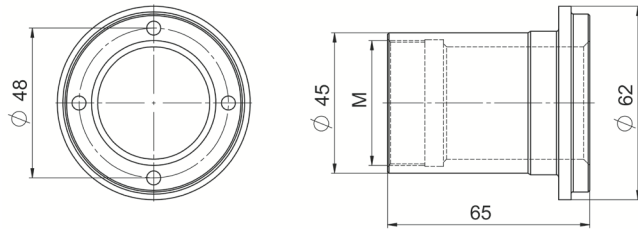
| STAR ECAS20 / SR20R/II / ST20 | |
|--------------------------------|---------|
| Artikel-Nr. article-no. | M |
| FVM.ECAS20 | M25 x 1 |
| FVM.ECAS20-M27 | M27 x 1 |
| erweitert - <i>enlarged to</i> | M27 x 1 |



| STAR ECAS32 / SV32 / SR32 | |
|--------------------------------|---------|
| Artikel-Nr. article-no. | M |
| FVM.ECAS32 | M40 x 1 |
| FVM.ECAS32-M42 | M42 x 1 |
| erweitert - <i>enlarged to</i> | M42 x 1 |



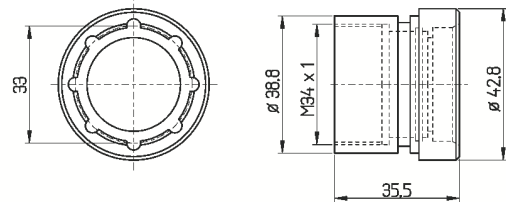
| STAR SR32JII | |
|---|---------|
| Artikel-Nr. article-no. | M |
| FVM.SR32JII | M40 x 1 |
| FVM.SR32JII-M42 erweitert - <i>enlarged to</i> M42 x 1 | M42 x 1 |



Führungsbüchsen-Anzugsmuttern GILDEMEISTER

Guide Bush Nuts GILDEMEISTER

| GILDEMEISTER GLD25 | |
|----------------------------|--|
| Artikel-Nr. article-no. | |
| FVM.GLD25 | |



| GILDEMEISTER SPRINT20 | |
|----------------------------|--|
| Artikel-Nr. article-no. | |
| FVM.SPEED20 | |

