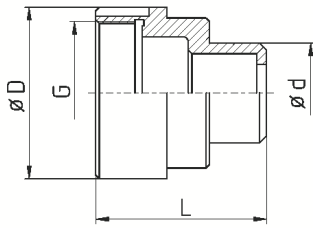


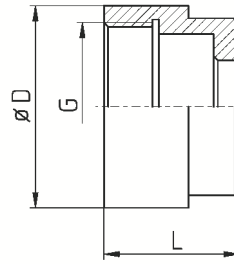
Überwurfmuttern für Druckhülsen

*Cap Nuts for
Collet Sleeves*





MU-CIT-K12/B/F15v15



MU-CIT-M216/B/F20

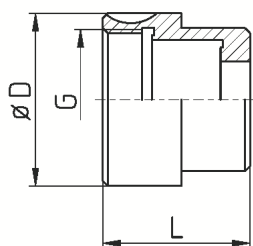


| Artikel-Nr. article-no. | Maschine / Typ machine / type | A / B - Spindel | D | G | L | d | verl. ext. [mm] | Zange collet | Original Nr. original no. |
|----------------------------|-----------------------------------|--------------------|-----|---------|------|----|-----------------------|-----------------|------------------------------|
| MU-CIT-A20/AB/F25 | CITIZEN CINCOM A20 | A+B | 65 | M55x1,5 | 50 | | | 145E / F25 | 596-076-1 |
| MU-CIT-A32CL/A/F37 | CITIZEN CINCOM A32VII CL | A | 100 | - | 28 | | | 1536E / F37 | 549-925-1 |
| MU-CIT-A32CL/A/F40 | CITIZEN CINCOM A32VII CL | A | 100 | - | 28 | | | F40 | |
| MU-CIT-B12/A/F15 | CITIZEN CINCOM B12 | A | 42 | M32x1 | 32 | | | 120E / F15 | |
| MU-CIT-B12/A/F16 | CITIZEN CINCOM B12 | A | 42 | M32x1 | 32 | | | 1212E / F16 | B12U9110Z |
| MU-CIT-B12/B/F10v10 | CITIZEN CINCOM B12 | B | 42 | M32x1 | 35 | 24 | 10 | 109E / F10 | |
| MU-CIT-B12/B/F13 | CITIZEN CINCOM B12 | B | 42 | M32x1 | | | | 116E / F13 | |
| MU-CIT-B12/B/F15 | CITIZEN CINCOM B12 | B | 42 | M32x1 | 25 | | | 120E / F15 | |
| MU-CIT-B12/B/F16 | CITIZEN CINCOM B12 | B | 42 | M32x1 | 25 | | | 1212E / F16 | 593-171-1 |
| MU-CIT-B16E/A/F20 | CITIZEN CINCOM B16E | A | 47 | M40x1,5 | 43,5 | | | 138E / F20 | 594-142 |
| MU-CIT-C32/A/F37 | CITIZEN CINCOM C32 | A | 75 | M65x1,5 | 74 | | | 1536E / F37 | |
| MU-CIT-E16/B/F25 | CITIZEN CINCOM E16 | B | 47 | M50x1,5 | 42 | | | 145E / F25 | |
| MU-CIT-E32/A/F37 | CITIZEN CINCOM E32 | A | 92 | M75x1,5 | 42 | | | 1536E / F37 | 597-004 |
| MU-CIT-K12/A/F15 | CITIZEN CINCOM K12 | A | 48 | M40x1,5 | 65 | | | 120E / F15 | |
| MU-CIT-K12/A/F16 | CITIZEN CINCOM K12 | A | 48 | M40x1,5 | 65 | | | 1212E / F16 | |
| MU-CIT-K12/B/F8v10 | CITIZEN CINCOM K12 | B | 48 | M40x1,5 | 42 | 17 | 10 | 101E / F8 | |
| MU-CIT-K12/B/F10v15 | CITIZEN CINCOM K12 | B | 48 | M40x1,5 | 47 | 24 | 15 | 109E / F10 | |
| MU-CIT-K12/B/F13 | CITIZEN CINCOM K12 | B | 48 | M40x1,5 | 32 | | | 116E / F13 | |
| MU-CIT-K12/B/F15 | CITIZEN CINCOM K12 | B | 48 | M40x1,5 | 32 | | | 120E / F15 | |
| MU-CIT-K12/B/F15v15 | CITIZEN CINCOM K12 | B | 48 | M40x1,5 | 47 | 28 | 15 | 120E / F15 | |
| MU-CIT-K12/B/F15v18 | CITIZEN CINCOM K12 | B | 48 | M40x1,5 | 50 | 28 | 18 | 120E / F15 | |
| MU-CIT-K12/B/F16 | CITIZEN CINCOM K12 | B | 48 | M40x1,5 | 32 | | | 1212E / F16 | 594-109 |
| MU-CIT-K16/B/F20 | CITIZEN CINCOM K16 | B | 48 | M40x1,5 | 32 | | | 138E / F20 | |
| MU-CIT-L16I/A/F15 | CITIZEN CINCOM L16I | A | 60 | M50x1,5 | 55 | | | 120E / F15 | 595-030-1 |
| MU-CIT-L16VI/A/F15 | CITIZEN CINCOM L16VI | A | 66 | M50x1,5 | 40 | | | 120E / F15 | |
| MU-CIT-L16VI/A/F25 | CITIZEN CINCOM L16VI | A | 66 | M50x1,5 | 43 | | | 145E / F25 | 595-011 |
| MU-CIT-L16/B/F15v15 | CITIZEN CINCOM L16VII; M20 | B | 60 | M50x1,5 | 55 | | | 120E / F15 | |
| MU-CIT-L16/B/F20 | CITIZEN CINCOM L16VII; M20 | B | 60 | M50x1,5 | 38 | | | 138E / F20 | |
| MU-CIT-L16VI/B/F25 | CITIZEN CINCOM L16VI | B | 60 | M50x1,5 | 40 | | | 145E / F25 | 595-067 |
| MU-CIT-L2012//F25 | CITIZEN CINCOM L20-12 | | 63 | M55x1,5 | 54 | | | 145E / F25 | |
| MU-CIT-L220X/B/F25 | CITIZEN CINCOM L ₂ 20X | B | 63 | M55x1,5 | 54 | | | 145E / F25 | 595-189 |
| MU-CIT-L520/A/F25 | CITIZEN CINCOM L520VIII | A | 60 | M50x1,5 | 58 | | | 145E / F25 | 595-133 |
| MU-CIT-L520/A/F27 | CITIZEN CINCOM L520VIII | A | 60 | M50x1,5 | 58 | | | 147E / F27 | |
| MU-CIT-L520/B/F25 | CITIZEN CINCOM L520VIII | B | 60 | M50x1,5 | 47 | | | 145E / F25 | 595-117-1 |
| MU-CIT-M12/B/F15 | CITIZEN CINCOM M12 | B | 45 | M35x1,5 | 32 | | | 120E / F15 | |
| MU-CIT-M12/B/F16 | CITIZEN CINCOM M12 | B | 45 | M35x1,5 | | | | 1212E / F16 | |
| MU-CIT-M216/A/F20 | CITIZEN CINCOM M ₂ 16 | A | 52 | M45x1,5 | 44 | | | 138E / F20 | 594-090 |
| MU-CIT-M216/B/F10v15 | CITIZEN CINCOM M ₂ 16 | B | 48 | M40x1,5 | 47 | | 15 | 109E / F10 | |
| MU-CIT-M216/B/F13v15 | CITIZEN CINCOM M ₂ 16 | B | 48 | M40x1,5 | 47 | 28 | 15 | 116E / F13 | |
| MU-CIT-M216/B/F15 | CITIZEN CINCOM M ₂ 16 | B | 48 | M40x1,5 | | | | 120E / F15 | |

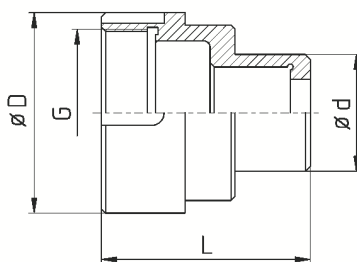
A = Hauptspindel; B = Abgreifspindel

A = main spindle; B = sub spindle

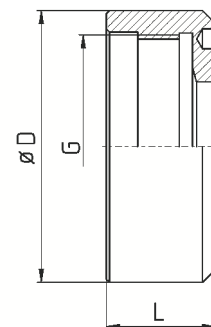
Überwurfmutter / Cap Nuts for Collet Sleeves



MU-CIT-R07/B/F10



MU-CIT-M216/B/F16v18



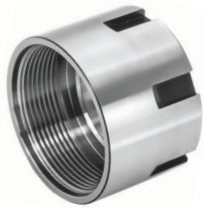
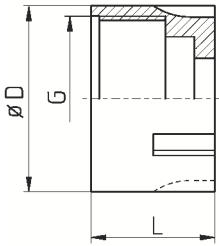
MU-SPIN-TC32//F38

| Artikel-Nr. article-no. | Maschine / Typ machine / type | A / B - Spindel | D | G | L | d | verl. ext. [mm] | Zange collet | Original Nr. original no. |
|----------------------------|----------------------------------|--------------------|------|----------|------|----|-----------------------|-----------------|------------------------------|
| MU-CIT-M216/B/F15v15 | CITIZEN CINCOM M ₂ 16 | B | 48 | M40x1,5 | 48 | 28 | 15 | 120E / F15 | |
| MU-CIT-M216/B/F15v18 | CITIZEN CINCOM M ₂ 16 | B | 48 | M40x1,5 | 50 | 28 | 18 | 120E / F15 | |
| MU-CIT-M216/B/F16v15 | CITIZEN CINCOM M ₂ 16 | B | 48 | M40x1,5 | 47 | 28 | 15 | 1212E / F16 | |
| MU-CIT-M216/B/F16v18 | CITIZEN CINCOM M ₂ 16 | B | 48 | M40x1,5 | 50 | 28 | 18 | 1212E / F16 | |
| MU-CIT-M216/B/F16 | CITIZEN CINCOM M ₂ 16 | B | 48 | M40x1,5 | 32 | | | 1212E / F16 | |
| MU-CIT-M216/B/F20 | CITIZEN CINCOM M ₂ 16 | B | 48 | M40x1,5 | 32 | | | 138E / F20 | 594-091 |
| MU-CIT-M316/B/F10v15 | CITIZEN CINCOM M ₃ 16 | B | 48 | M40x1,5 | 48 | | 15 | 109E / F10 | 4159400140 |
| MU-CIT-M32/A/F37 | CITIZEN CINCOM M32 | A | 75 | M65x1,5 | 74 | | | 1536E / F37 | |
| MU-CIT-M32/B/F20 | CITIZEN CINCOM M32 | B | 76 | M65x1,5 | 53 | | | 138E / F20 | |
| MU-CIT-M32/B/F37 | CITIZEN CINCOM M32 | B | 76 | M65x1,5 | 53 | | | 1536E / F37 | 596-061 |
| MU-CIT-M432/A/F20 | CITIZEN CINCOM M ₄ 32 | A | 80 | M70x1,5 | 74 | | | 138E / F20 | |
| MU-CIT-M432/A/F25 | CITIZEN CINCOM M ₄ 32 | A | 80 | M70x1,5 | 74 | | | 145E / F25 | |
| MU-CIT-M432/A/F37 | CITIZEN CINCOM M ₄ 32 | A | 80 | M70x1,5 | 74 | | | 1536E / F37 | 597-044 |
| MU-CIT-M432/A/F40 | CITIZEN CINCOM M ₄ 32 | A | 80 | M70x1,5 | 74 | | | F40 | |
| MU-CIT-M432/B/F20 | CITIZEN CINCOM M ₄ 32 | B | 76 | M65x1,5 | 58 | | | 138E / F20 | |
| MU-CIT-M432/B/F25 | CITIZEN CINCOM M ₄ 32 | B | 76 | M65x1,5 | 58 | | | 145E / F25 | |
| MU-CIT-M432/B/F37 | CITIZEN CINCOM M ₄ 32 | B | 76 | M65x1,5 | 58 | | | 1536E / F37 | 596-084 |
| MU-CIT-M432/B/F40 | CITIZEN CINCOM M ₄ 32 | B | 76 | M65x1,5 | 58 | | | F40 | |
| MU-CIT-ML12/A/F13 | CITIZEN CINCOM ML12 | A | 47 | M40x1,5 | 43,5 | | | 116E / F13 | |
| MU-CIT-ML12/A/F15 | CITIZEN CINCOM ML12 | A | 47 | M40x1,5 | 43,5 | | | 120E / F15 | |
| MU-CIT-ML12/A/F16 | CITIZEN CINCOM ML12 | A | 47 | M40x1,5 | 43,5 | | | 1212E / F16 | |
| MU-CIT-R07/B/F8 | CITIZEN CINCOM R07 | B | 35 | M28x1 | 30 | | | 101E / F8 | 592-166 |
| MU-CIT-R07/B/F10 | CITIZEN CINCOM R07 | B | 35 | M28x1 | 30 | | | 109E / F10 | |
| MU-CIT-R207/B/F13 | CITIZEN CINCOM R ₂ 07 | B | 35 | M28x1 | 30 | | | 116E / F13 | |
| MU-FEIN-FA10//F15 | FEINLER FA10 | | 38 | M32x1,5 | 23 | | | 120E / F15 | |
| MU-INDE-18//F28 | INDEX 18 | | 68 | M58x2L | 31,5 | | | 148E / F28 | |
| MU-INDE-25//F28 | INDEX 25 | | 72 | M63x2L | 31,5 | | | 148E / F28 | |
| MU-INDE-52//F66 | INDEX 52 | | 117 | M108x2L | 41,5 | | | 185E / F66 | |
| MU-INDE-B30//F35 | INDEX B30 | | 88 | M74x2L | 38,5 | | | 163E / F35 | |
| MU-INDE-B42//F48 | INDEX B42; 36 | | 97 | M85x2L | 38,5 | | | 173E / F48 | |
| MU-INDE-B60//F66 | INDEX B60 | | 122 | M108x2L | 34 | | | 185E / F66 | |
| MU-INDE-C19//F28 | INDEX C19 | | 73 | M63x2L | 34 | | | 148E / F28 | |
| MU-INDE-C29//F28 | INDEX C29 | | 84,5 | M74x2L | 35 | | | 148E / F28 | |
| MU-INDE-C29//F35 | INDEX C29 | | 84,5 | M74x2L | 35 | | | 163E / F35 | |
| MU-INDE-DG12//F22 | INDEX DG12 | | 62 | M52x2L | 23 | | | 140E / F22 | |
| MU-INDE-ON12//136E | INDEX ON12; OR12 | | 45 | M40x1,5L | 41 | | | 136E / F20 | |
| MU-SPIN-PD42//F48 | SPINNER PD42 | | 90 | M80x2 | 35 | | | 173E / F48 | |
| MU-SPIN-TC32//F35 | SPINNER TC32 | | 82 | M68x3 | 33 | | | 163E / F35 | |
| MU-SPIN-TC32//F38 | SPINNER TC32 | | 82 | M68x3 | 33 | | | 164E / F38 | |
| MU-STRO-M105//F15 | STROHM M105 - 125 | | 34 | M30x1,5 | 20 | | | 120E / F15 | |
| MU-STRO-M125AS/F15 | STROHM M125AS | | 35,5 | M32x1,5 | 35 | | | 120E / F15 | |
| MU-STRO-M205//F25 | STROHM M205; M255 | | 63 | M56x1,5 | 40 | | | 145E / F25 | |

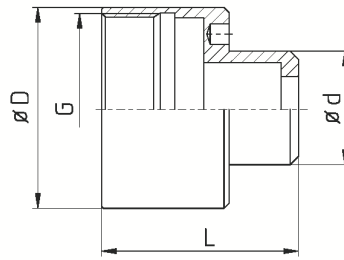
A = Hauptspindel; B = Abgreifspindel

A = main spindle; B = sub spindle

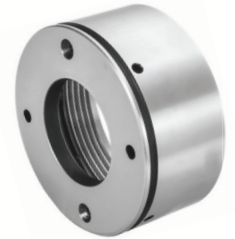
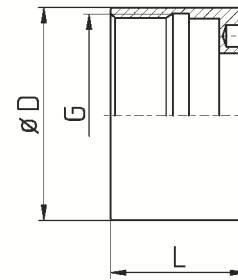
Überwurfmuttern / Cap Nuts for Collet Sleeves



MU-TORN-DECO2000-13//136E



MU-TSUG-HS207/B/F15v15



MU-TSUG-HS207/B/F25

| Artikel-Nr. article-no. | Maschine / Typ machine / type | A / B - Spindel | D | G | L | d | verl. ext. [mm] | Zange collet | Original Nr. original no. |
|-------------------------------|----------------------------------|--------------------|------|-----------|----|------|-----------------------|-----------------|------------------------------|
| MU-TORN-AS14/B/F16 | TORNOS AS14 / SAS16 | B | 38 | M32x1L | 15 | | | 1212E / F16 | |
| MU-TORN-DECO2000-13//136E | TORNOS DECO2000/13 | A+B | 45 | M40x1,5 | 30 | | | 136E / F20 | |
| MU-TORN-DECO2000-13/AB/F13v12 | TORNOS DECO2000/13 | A+B | 45 | M40x1,5 | 42 | 30 | 12 | 116E / F13 | |
| MU-TORN-EVODECO16//F13v12 | TORNOS EVODECO16 | | 45 | M40x1,5 | 48 | 30 | 12 | 116E / F13 | |
| MU-TORN-GAMMA//F13v12 | TORNOS GAMMA | | 49 | M46x1,5 | 44 | 27,3 | 12 | 116E / F13 | |
| MU-TORN-R10//F15 | TORNOS R10 | | 37,5 | M33x1,25L | 17 | | | 120E / F15 | |
| MU-TRAU-A20//F22 | TRAUB A20 | | 63 | M52x3 | 39 | | | 140E / F22 | |
| MU-TRAU-A20//F28 | TRAUB A20 | | 63 | M52x3 | 39 | | | 148E / F28 | |
| MU-TRAU-A25//F22 | TRAUB A25 | | 72 | M62x2,5 | 39 | | | 140E / F22 | |
| MU-TRAU-A25//F32 | TRAUB A25 | | 72 | M62x2,5 | 39 | | | 161E / F32 | |
| MU-TRAU-A42//F32 | TRAUB A42; TB42 | | 91 | M80x3 | 46 | | | 161E / F32 | |
| MU-TRAU-A42//F48 | TRAUB A42; TB42 | | 91 | M80x3 | 46 | | | 173E / F48 | |
| MU-TRAU-TD26//F32 | TRAUB TD26 ab 1976 | | 78 | M70x3 | 40 | | | 161E / F32 | |
| MU-TRAU-TD26alt//F32 | TRAUB TD26 bis 1976 | | 78 | M70x3 | 40 | | | 161E / F32 | |
| MU-TRAU-TD36alt//F42 | TRAUB TD36 bis 1976 | | 86 | M80x3 | 40 | | | 171E / F42 | |
| MU-TRAU-TNL12/A/F20 | TRAUB TNL12 | A | 56 | M40x1,5 | 28 | | | 138E / F20 | 982706 |
| MU-TRAU-TNL16/F20 | TRAUB TNL16 | | 50 | | 30 | | | 138E/F20 | |
| MU-TSUG-BS32/A/F37 | TSUGAMI BS32 | A | 81,8 | M70x1,5 | 50 | | | 1536E / F37 | |
| MU-TSUG-HS207/B/F15v15 | TSUGAMI HS207 | B | 49 | M46x1,5 | 48 | 27,3 | 15 | 120E / F15 | |
| MU-TSUG-HS207/B/F25 | TSUGAMI HS207 | B | 49 | M46x1,5 | 31 | | | 145E / F25 | |
| MU-BOL-BC42/A/140E | BOLEY BC42 | A | 48 | M40x1,5 | 65 | | | 140E / F22 | |

A = Hauptspindel; B = Abgreifspindel

A = main spindle; B = sub spindle

Identische Überwurfmuttern unterschiedlicher Maschinentypen Identical cap nuts for collet sleeves for different machine types

| Spindel spindle | A | B | Standardzange standard collet | Spindel spindle | A | B | Standardzange standard collet | Spindel spindle | A | B | Standardzange standard collet |
|------------------|------|----|-------------------------------|--------------------|----|----|-------------------------------|------------------|----|-------------|-------------------------------|
| Maschine machine | | | | Maschine machine | | | | Maschine machine | | | |
| SW7 | 1 | 30 | F15 / 120E | SR16R | 10 | 14 | F25 / 145E | ECAS32 | 17 | F37 / 1536E | |
| SR10J | | | | ECAS20 | 10 | 15 | | JNC32 | 18 | | |
| SL10 | | | | KNC20 | 13 | 16 | | KNC32 | 18 | | |
| | SB20 | 11 | 14 | SR32 | 17 | 19 | | | | | |
| SB12RG | 24 | 26 | F16 / 1212E | SB20RE | 10 | 14 | | SR32J (neu) | 17 | | 19 |
| SB12RN | 24 | 26 | | SB20RN | 12 | 14 | | SR32JII | 27 | | 28 |
| SB12RE | 24 | 26 | | SB20RG | 12 | 14 | | SR32JN | | | 19 |
| SW12RII | 24 | 25 | | SR20 | 13 | 16 | | SV32 | 17 | | 19 |
| | | | | SR20J | 11 | 14 | | SV32J | 17 | | 19 |
| | | | | SR20JII | | 15 | | VNC32 | 18 | | |
| SA12 | 2 | 6 | F20 / 138E | SR20JN | | 14 | | | | | |
| SA16 | 2 | 6 | | SR20R I / II / III | 10 | 14 | ST38 | | 23 | | |
| SB12 | 2 | 6 | | SR20R IV | 29 | 15 | SV38R | 22 | 23 | | |
| SB16 | 2 | 6 | | SV20 | 11 | 14 | SR38 | 22 | 23 | | |
| ECAS12 | | 7 | | SV20R | 29 | 15 | SX38 | 22 | 23 | | |
| ECAS16 | | 7 | | SW20 | 10 | 15 | | | | | |
| SV12 | 4 | 6 | | ST20 | 10 | 15 | | | | | |
| SW12R | | | | VNC20 | 13 | | | | | | |
| KJR16 | 5 | 8 | | | | | | | | | |
| RNC16 (neu) | 3 | | | | | | | | | | |
| RNC16 (alt) | 3 | | | | | | | | | | |
| SA16R | 4 | 6 | | | | | | | | | |
| SR16 | 5 | 8 | | | | | | | | | |
| SST16 | 5 | 8 | | | | | | | | | |

Hauptspindel (A)
Gegenspindel (B)

Main spindle (A)
Sub spindle (B)

Maschinen mit gleicher Nummer haben identische Überwurfmuttern.

Machines with identical number have identical nuts.

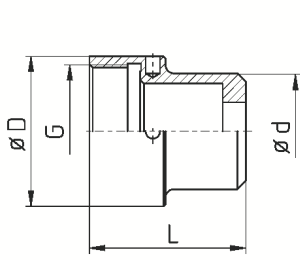
Ist keine Nummer angegeben, gibt es keine weiteren kompatiblen Maschinen.

If a number is not specified there is no other compatible machine.

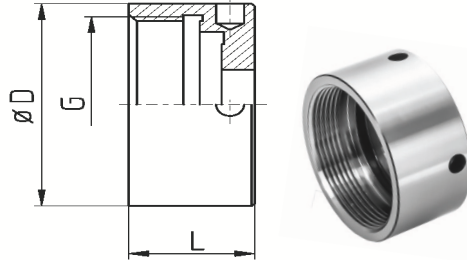
Sind die Muttern mehrerer Maschinen miteinander kompatibel, werden nur die Muttern der grau unterlegten Maschinen in den Maßtabellen aufgeführt.

If nuts of different machines are identical only the grey marked machine types will be found in the list.

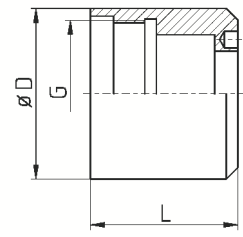
Überwurfmuttern / Cap Nuts for Collet Sleeves



MU-STAR-SW7/B/F13v15



MU-STAR-SA12/B/F15



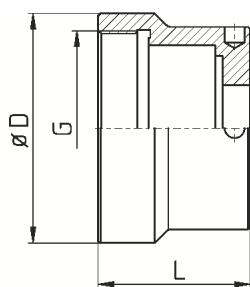
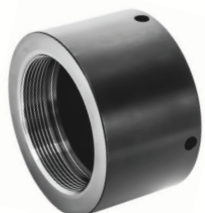
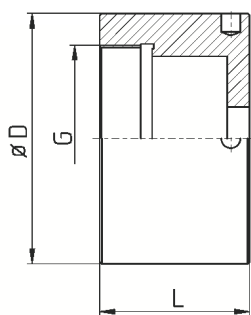
MU-STAR-RNC16/B/F20v15

| Artikel-Nr. article-no. | Maschine / Typ machine / type | A / B - Spindel | D | G | L | d | verl. ext. [mm] | Zange collet | Original Nr. original no. |
|----------------------------|----------------------------------|--------------------|------|---------|------|------|-----------------------|-----------------|------------------------------|
| MU-STAR-SW7/B/F7v15 | STAR SW7 | B | 42 | M36x1,5 | 42,5 | 18 | 15 | 1020E / F7 | |
| MU-STAR-SW7/B/F10v17 | STAR SW7 | B | 42 | M36x1,5 | 44,5 | 24 | 17 | 109E / F10 | |
| MU-STAR-SW7/B/F15 | STAR SW7 | B | 42 | M36x1,5 | 27,5 | | | 120E / F15 | 382-32-040 |
| MU-STAR-SR10J/A/F8 | STAR SR10J | A | 42 | M36x1,5 | 23 | | | 109E / F8 | |
| MU-STAR-SR10J/A/F15 | STAR SR10J | A | 42 | M36x1,5 | 23 | | | 120E / F15 | 380-32-030 |
| MU-STAR-SR10J/B/F8 | STAR SR10J | B | 35 | M31x1,5 | 18 | | | 101E / F8 | |
| MU-STAR-SR10J/B/F8v10 | STAR SR10J | B | 35 | M31x1,5 | 28 | 17 | 10 | 101E / F8 | |
| MU-STAR-SR10J/B/F10v15 | STAR SR10J | B | 35 | M31x1,5 | 33 | 24 | 15 | 109E / F10 | |
| MU-STAR-SR10J/B/F13 | STAR SR10J | B | 35 | M31x1,5 | 18 | | | 116E / F13 | |
| MU-STAR-SR10J/B/F13v10 | STAR SR10J | B | 35 | M31x1,5 | 29 | 28 | 10 | 116E / F13 | |
| MU-STAR-SR10J/B/F13v15 | STAR SR10J | B | 35 | M31x1,5 | 34 | 28 | 15 | 116E / F13 | |
| MU-STAR-SR10J/B/F15 | STAR SR10J | B | 35 | M31x1,5 | 18 | | | 120E / F15 | 69372-020 40130 |
| MU-STAR-SL10/A/F15 | STAR SL10 | A | 48 | M38x1,5 | 39 | | | 120E / F15 | 38840 |
| MU-STAR-SA12/A/F15 | STAR SA12 | A | 55 | M44x1,5 | 42 | | | 120E / F15 | |
| MU-STAR-SA12/A/F20 | STAR SA12 | A | 55 | M44x1,5 | 42 | | | 138E / F20 | 39165-200 |
| MU-STAR-SA12/B/F10v10 | STAR SA12 | B | 46 | M40x1,5 | 33 | 24 | 10 | 109E / F10 | |
| MU-STAR-SA12/B/F10v15 | STAR SA12 | B | 46 | M40x1,5 | 38 | 24 | 15 | 109E / F10 | |
| MU-STAR-SA12/B/F15 | STAR SA12 | B | 46 | M40x1,5 | 23 | | | 120E / F15 | |
| MU-STAR-SA12/B/F20 | STAR SA12 | B | 46 | M40x1,5 | 23 | | | 138E / F20 | 46373-020 |
| MU-STAR-SB12RG/A/136E | STAR SB12R-G | A | 44 | M38x1,5 | 35 | | | 136E / F20 | |
| MU-STAR-SB12RG/A/F10 | STAR SB12R-G | A | 44 | M38x1,5 | 35 | | | 109E / F10 | |
| MU-STAR-SB12RG/A/F15 | STAR SB12R-G | A | 44 | M38x1,5 | 35 | | | 120E / F15 | |
| MU-STAR-SB12RG/A/F16 | STAR SB12R-G | A | 44 | M38x1,5 | 35 | | | 1212E / F16 | 1L353-021 |
| MU-STAR-SB12RG/B/F16 | STAR SB12R-G | B | 59 | M50x1 | 41 | | | 1212E / F16 | 0M393-010 |
| MU-STAR-ECAS12/B/F20 | STAR ECAS12 | B | 55 | M45x1,5 | 38 | | | 138E / F20 | 57379-020 |
| MU-STAR-SV12/A/F10v48 | STAR SV12 | A | 55 | M45x1,5 | 86 | 23,8 | 48 | 109E / F10 | |
| MU-STAR-SV12/A/F20 | STAR SV12 | A | 55 | M45x1,5 | 38 | | | 138E / F20 | |
| MU-STAR-SW12R/B/F10v10 | STAR SW12R II | B | 46 | M40x1,5 | 46 | 25 | 10 | 109E / F10 | |
| MU-STAR-SW12R/B/F10v15 | STAR SW12R II | B | 46 | M40x1,5 | 51 | 24 | 15 | 109E / F10 | |
| MU-STAR-SW12R/B/F13 | STAR SW12R II | B | 46 | M40x1,5 | 36 | | | 116E / F13 | |
| MU-STAR-SW12R/B/F15 | STAR SW12R II | B | 46 | M40x1,5 | 36 | | | 120E / F15 | |
| MU-STAR-SW12R/B/F16 | STAR SW12R II | B | 46 | M40x1,5 | 36 | | | 1212E / F16 | |
| MU-STAR-SW12R/B/136E | STAR SW12R II | B | 46 | M40x1,5 | 36 | | | 136E / F20 | |
| MU-STAR-SB16/A/F20 | STAR SB16 | A | 49,5 | M44x1,5 | 40 | | | 138E / F20 | |
| MU-STAR-RNC16/A/F20 | STAR RNC16 | A | 49,5 | M44x1,5 | 40 | | | 138E / F20 | 210-34-050 |
| MU-STAR-RNC16alt/B/F15 | STAR RNC16 alt | B | 39 | M33x1,5 | 25 | | | 120E / F15 | 270-84-020 |
| MU-STAR-SST16/A/F20 | STAR SST16 | A | 55 | M44x1,5 | 42 | | | 138E / F20 | 250-34-020 |
| MU-STAR-SST16/B/F20 | STAR SST16 | B | 50 | M44x1,5 | 30 | | | 138E / F20 | 252-32-170 |
| MU-STAR-SB20RN/A/F25 | STAR SB20RN | A | 65 | M50x1,5 | 37 | | | 145E / F25 | 0M353-020 |
| MU-STAR-SB20RN/A/F27 | STAR SB20RN | A | 65 | M50x1,5 | 37 | | | 147E / F27 | |
| MU-STAR-SB20RN/B/F25 | STAR SB20RN | B | 59 | M50x1 | 41 | | | 145E / F25 | 0M375-010 |
| MU-STAR-SB20RN/B/F27 | STAR SB20RN | B | 59 | M50x1 | 39 | | | 147E / F27 | 54387-010 |
| MU-STAR-SB20RN/B/F27L | STAR SB20RN | B | 59 | M50x1 | 41 | | | 147E / F27 | |

A = Hauptspindel; B = Abgreifspindel

A = main spindle; B = sub spindle

Überwurfmuttern / Cap Nuts for Collet Sleeves



MU-STAR-SR20R/A/F16

MU-STAR-SR20R/A/F25

MU-STAR-ECAS20/B/F20

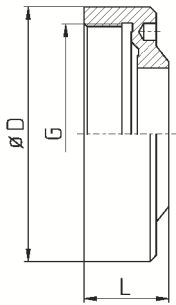
MU-STAR-SR20/B/F10v15

| Artikel-Nr. article-no. | Maschine / Typ machine / type | A / B - Spindel | D | G | L | d | verl. ext. [mm] | Zange collet | Original Nr. original no. |
|----------------------------|----------------------------------|--------------------|----|---------|----|----|-----------------------|-----------------|------------------------------|
| MU-STAR-ECAS20/B/F8v15 | STAR ECAS20 | B | 59 | M50x1,5 | 54 | 17 | 15 | 101E / F8 | |
| MU-STAR-ECAS20/B/F10v15 | STAR ECAS20 | B | 59 | M50x1,5 | 54 | 24 | 15 | 109E / F10 | |
| MU-STAR-ECAS20/B/F13v15 | STAR ECAS20 | B | 59 | M50x1,5 | 54 | 28 | 15 | 116E / F13 | |
| MU-STAR-ECAS20/B/F15v15 | STAR ECAS20 | B | 59 | M50x1,5 | 54 | 28 | 15 | 120E / F15 | |
| MU-STAR-ECAS20/B/F16v15 | STAR ECAS20 | B | 59 | M50x1,5 | 54 | 28 | 15 | 1212E / F16 | |
| MU-STAR-ECAS20/B/136E | STAR ECAS20 | B | 59 | M50x1,5 | 39 | | | 136E / F20 | |
| MU-STAR-ECAS20/B/F25 | STAR ECAS20 | B | 59 | M50x1,5 | 39 | | | 145E / F25 | 57372-020 |
| MU-STAR-ECAS20/B/F27 | STAR ECAS20 | B | 59 | M50x1,5 | 36 | | | 147E / F27 | |
| MU-STAR-ECAS20/B/F27L | STAR ECAS20 | B | 59 | M50x1,5 | 39 | | | 147E / F27 | |
| MU-STAR-SR20/A/F25 | STAR SR20 | A | 64 | M56x1,5 | 40 | | | 145E / F25 | 320-34-020 |
| MU-STAR-SR20/A/F27 | STAR SR20 | A | 64 | M56x1,5 | 40 | | | 147E / F27 | |
| MU-STAR-SR20/B/F10v15 | STAR SR20 | B | 59 | M50x1 | 56 | 24 | 15 | 109E / F10 | 532-32-170 |
| MU-STAR-SR20/B/F25 | STAR SR20 | B | 59 | M50x1 | 41 | | | 145E / F25 | |
| MU-STAR-SR20/B/F27 | STAR SR20 | B | 59 | M50x1 | 41 | | | 147E / F27 | |
| MU-STAR-SR20JN/A/F25 | STAR SR20JN | A | 67 | M56x1,5 | 28 | | | 145E / F25 | 0E357-020 |
| MU-STAR-SR20JN/A/F27 | STAR SR20JN | A | 67 | M56x1,5 | 28 | | | 147E / F27 | |
| MU-STAR-SR20JII/A/F25 | STAR SR20JII | A | 65 | M50x1,5 | 37 | | | 145E / F25 | PO-22850 |
| MU-STAR-SR20JII/A/F27 | STAR SR20JII | A | 65 | M50x1,5 | 37 | | | 147E / F27 | |
| MU-STAR-SR20R/A/F16 | STAR SR20R I / II / III | A | 67 | M50x1,5 | 40 | | | 1212E / F16 | |
| MU-STAR-SR20R/A/F20 | STAR SR20R I / II / III | A | 67 | M50x1,5 | 40 | | | 138E / F20 | |
| MU-STAR-SR20R/A/F25 | STAR SR20R I / II / III | A | 67 | M50x1,5 | 40 | | | 145E / F25 | 54823-020 |
| MU-STAR-SR20R/A/F27 | STAR SR20R I / II / III | A | 67 | M50x1,5 | 40 | | | 147E / F27 | |
| MU-STAR-SR20R/B/F8v15 | STAR SR20R I / II / III | B | 59 | M50x1 | 53 | 17 | 15 | 101E / F8 | |
| MU-STAR-SR20R/B/F10v15 | STAR SR20R I / II / III | B | 59 | M50x1 | 56 | 24 | 15 | 109E / F10 | |
| MU-STAR-SR20R/B/F13v15 | STAR SR20R I / II / III | B | 59 | M50x1 | 56 | 28 | 15 | 116E / F13 | |
| MU-STAR-SR20R/B/F15v8 | STAR SR20R I / II / III | B | 59 | M50x1 | 49 | 28 | 8 | 120E / F15 | |
| MU-STAR-SR20R/B/F15v15 | STAR SR20R I / II / III | B | 59 | M50x1 | 56 | 28 | 15 | 120E / F15 | |
| MU-STAR-SR20R/B/136E | STAR SR20R I / II / III | B | 59 | M50x1 | 41 | | | 136E / F20 | |
| MU-STAR-SR20R/B/F20 | STAR SR20R I / II / III | B | 59 | M50x1 | 41 | | | 138E / F20 | |
| MU-STAR-SR20R/B/F25 | STAR SR20R I / II / III | B | 59 | M50x1 | 41 | | | 145E / F25 | 42375-010 |
| MU-STAR-SR20R/B/F27 | STAR SR20R I / II / III | B | 59 | M50x1 | 39 | | | 147E / F27 | |
| MU-STAR-SR20R/B/F27L | STAR SR20R I / II / III | B | 59 | M50x1 | 41 | | | 147E / F27 | |
| MU-STAR-SR20R4/A/F25 | STAR SR20RIV | A | 65 | M50x1,5 | 37 | | | 145E / F25 | |
| MU-STAR-SR20R4/A/F27 | STAR SR20RIV | A | 65 | M50x1,5 | 37 | | | 147E / F27 | |
| MU-STAR-SR20R4/A/F15v15 | STAR SR20RIV | A | 65 | M50x1,5 | 52 | 28 | 15 | 120E / F15 | |
| MU-STAR-SV20/A/F25 | STAR SV20 | A | 67 | M56x1,5 | 28 | | | 145E / F25 | 42355-010 |
| MU-STAR-SV20/A/F27 | STAR SV20 | A | 67 | M56x1,5 | 28 | | | 147E / F27 | |

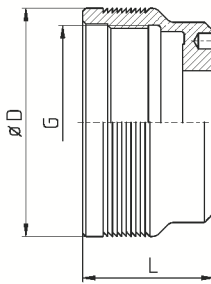
A = Hauptspindel; B = Abgreifspindel

A = main spindle; B = sub spindle

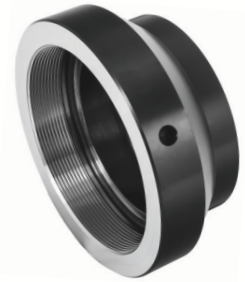
Überwurfmuttern / Cap Nuts for Collet Sleeves



MU-STAR-SR32JN/A/F37



MU-STAR-KNC32/B/F30



MU-STAR-SR38/A/F37

| Artikel-Nr. article-no. | Maschine / Typ machine / type | A / B - Spindel | D | G | L | d | verl. ext. [mm] | Zange collet | Original Nr. original no. |
|----------------------------|----------------------------------|--------------------|-----|---------|------|----|-----------------------|-----------------|------------------------------|
| MU-STAR-ECAS32/B/F20v23 | STAR ECAS32 | B | 85 | M62x1 | 63 | 38 | 23 | 138E / F20 | |
| MU-STAR-ECAS32/B/F37 | STAR ECAS32 | B | 85 | M62x1 | 43 | | | 1536E / F37 | |
| MU-STAR-KNC32/A/F37 | STAR KNC32 | A | 88 | M76x1,5 | 42 | | | 1536E / F37 | 200-34-020 |
| MU-STAR-KNC32/B/F25 | STAR KNC32 | B | 73 | M62x1 | 42 | | | 145E / F25 | |
| MU-STAR-KNC32/B/F37 | STAR KNC32 | B | 73 | M62x1 | 42 | | | 1536E / F37 | 202-32-120 |
| MU-STAR-SR32JN/A/F37 | STAR SR32JN | A | 81 | M70x1,5 | 27 | | | 1536E / F37 | |
| MU-STAR-SR32JN/A/F40 | STAR SR32JN | A | 81 | M70x1,5 | 27 | | | F40 | |
| MU-STAR-SR32JII/A/F37 | STAR SR32JII | A | 81 | M68x1,5 | 52 | | | 1536E / F37 | PO-12060 |
| MU-STAR-SR32JII/A/F40 | STAR SR32JII | A | 81 | M68x1,5 | 52 | | | F40 | |
| MU-STAR-SR32JII/B/F37 | STAR SR32JII | B | 73 | M62x1 | 42 | | | 1536E / F37 | PO-12310 |
| MU-STAR-SR32JII/B/F40 | STAR SR32JII | B | 73 | M62x1 | 42 | | | F40 | |
| MU-STAR-SV32/A/F25 | STAR SV32 | A | 90 | M76x1,5 | 35 | | | 145E / F25 | |
| MU-STAR-SV32/A/F37 | STAR SV32 | A | 90 | M76x1,5 | 35 | | | 1536E / F37 | 67353-020 |
| MU-STAR-SV32/A/F40 | STAR SV32 | A | 90 | M76x1,5 | 35 | | | F40 | 430-34-020 |
| MU-STAR-SV32/B/F20v20 | STAR SV32 | B | 73 | M62x1 | 63 | 38 | 20 | 138E / F20 | |
| MU-STAR-SV32/B/F25 | STAR SV32 | B | 73 | M62x1 | | | | 145E / F25 | |
| MU-STAR-SV32/B/F30 | STAR SV32 | B | 73 | M62x1 | | | | 1446E / F30 | |
| MU-STAR-SV32/B/F37 | STAR SV32 | B | 73 | M62x1 | 43 | | | 1536E / F37 | 332-32-030 |
| MU-STAR-SV32/B/F40 | STAR SV32 | B | 73 | M62x1 | 43 | | | F40 | |
| MU-STAR-ST38/A/F37 | STAR ST38 | A | 105 | M85x1,5 | 46,5 | | | 1536E / F37 | 0B353-020 |
| MU-STAR-ST38/A/F42 | STAR ST38 | A | 105 | M85x1,5 | 46,5 | | | 171E / F42 | |
| MU-STAR-ST38/A/F48 | STAR ST38 | A | 105 | M85x1,5 | 46,5 | | | 173E / F48 | 0B351-020 |
| MU-STAR-ST38/B/F25v20 | STAR ST38 | B | 105 | M85x1,5 | 47,5 | | 20 | 145E / F25 | |
| MU-STAR-ST38/B/F37 | STAR ST38 | B | 105 | M85x1,5 | 47,5 | | | 1536E / F37 | 0B373-010 |
| MU-STAR-ST38/B/F42 | STAR ST38 | B | 105 | M85x1,5 | 47,5 | | | 171E / F42 | |
| MU-STAR-ST38/B/F48 | STAR ST38 | B | 105 | M85x1,5 | 47,5 | | | 173E / F48 | 0B371-010 |
| MU-STAR-SV38R/A/F37 | STAR SV38-R | A | 94 | M80x1,5 | 70 | | | 1536E / F37 | 1A353-020 |
| MU-STAR-SV38R/A/F48 | STAR SV38-R | A | 94 | M80x1,5 | 70 | | | 173E / F48 | 1A351-020 |

A = Hauptspindel; B = Abgreifspindel

A = main spindle; B = sub spindle