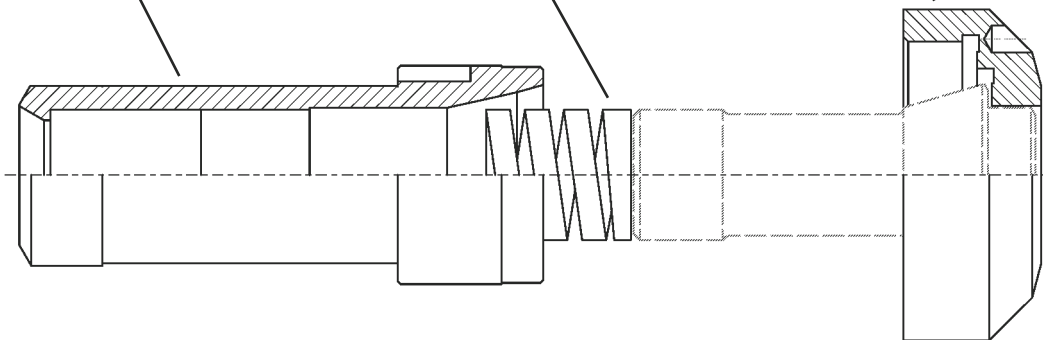


Ein Set besteht aus:

Druckhülse - *Collet Sleeve*

Druckfeder - *Pressure Spring for Collets*

Überwurfmutter - *Cap Nut for Collet Sleeves*



+ Führungsbüchsen-Anzugsmutter - nur bei Hauptspindelerweiterung und nur falls vorhanden

+ *Guide Bush Nut - only for main spindle extension and only if available*

Einzelteile:

Druckhülsen ab S. 180
 Überwurfmuttern ab S. 190
 Druckfedern für Spannzangen ab S. 198
 Führungsbüchsen-Anzugsmuttern ab S. 201

Component parts

Collet Sleeve from page 180
Cap Nuts for Collet Sleeves from page 190
Pressure Springs for Collets from page 198
Guide Bush Nuts from page 201

Artikel-Nr. bei Set-Bestellung:

Article-no. to order a set:

SET - Maschinenhersteller - Maschinentyp /
 Haupt- (A) oder Gegenspindel (B) / Zange

*SET - machine manufacturer - machine type /
 main (A) or sub (B) spindle / collet*

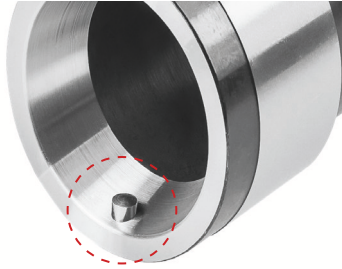
Beispiel: *Example:*

SET - STAR - SR20R / B / F27

Druckhülsen *Collet Sleeves*

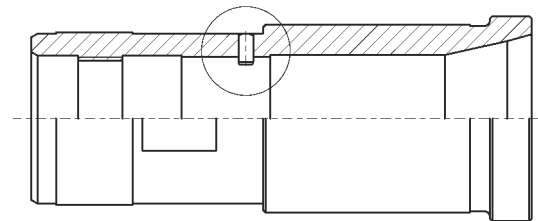
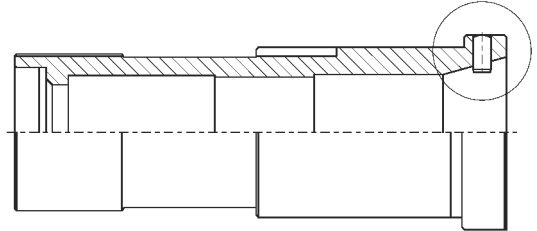


Verstiften von Druckhülsen



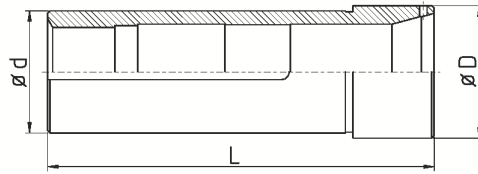
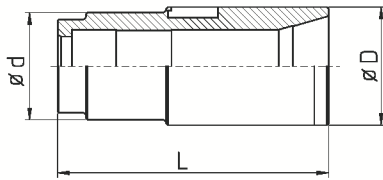
Optional

Pinned Collet Sleeves



optional

Beispiel:
Example:



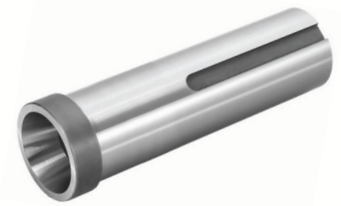
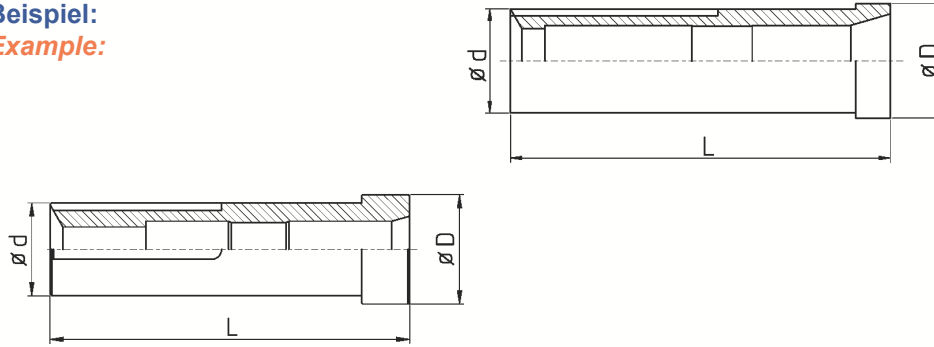
DH-CIT-A20/B/F25

Artikel-Nr. article-no.	Maschine / Typ machine / type	A / B - Spindel	D	d	L	verl. ext. [mm]	Zange collet	Feder spring	Original Nr. original no.
DH-BECH-AR10//F14	BECHLER AR10		24	20	62		117E / F14		
* DH-BENZ-TNI20/F20	BENZINGER TNI 20		33	30/26	75,5		138E / F20		
DH-BOLE-BC42//F48	BOLEY BC42		64,5	60	160,2		173E / F48		
DH-CIT-A20/AB/F25	CITIZEN CINCOM A20	A+B	44	42/40	126		145E / F25		564-521
DH-CIT-A32/A/F37	CITIZEN CINCOM A32	A	61	58	171		1536E / F37		566-212-1
DH-CIT-A32/A/F40	CITIZEN CINCOM A32	A	61	58	171		F40		
DH-CIT-A32/B/F37	CITIZEN CINCOM A32	B	58	54	147,5		1536E / F37		565-240-1
DH-CIT-A32CL/A/F37	CITIZEN CINCOM A32VII CL	A	65	55	170		1536E / F37		566-220
DH-CIT-A32CL/AB/F40	CITIZEN CINCOM A32VII CL	A	65	55	170		F40		
DH-CIT-A320/AB/F25	CITIZEN CINCOM A20	A+B	42	42	127		145E / F25		564-583
DH-CIT-B12/A/F15	CITIZEN CINCOM B12	A	24,5	23	89		120E / F15	DF15F 11.5-33	
DH-CIT-B12E/A/F15	CITIZEN CINCOM B12E	A	33	28	109		120E / F15		
DH-CIT-B12/A/F16	CITIZEN CINCOM B12	A	24,5	23	89		1212E / F16		B12U9110Z
DH-CIT-B12/B/F10v10	CITIZEN CINCOM B12	B	28	23	90	10	109E / F10		
DH-CIT-B12/B/F13	CITIZEN CINCOM B12	B	28	23	90		116E / F13	DF13R 10-36	
DH-CIT-B12/B/F15	CITIZEN CINCOM B12	B	28	23	90		120E / F15		
DH-CIT-B12/B/F16	CITIZEN CINCOM B12	B	28	23	90		1212E / F16		562-502
DH-CIT-B16E/A/F20	CITIZEN CINCOM B16E	A	33	28	110		138E / F20		563-480-1
DH-CIT-C16/A/F22	CITIZEN CINCOM C16	A	--	--	--		140E / F22		
DH-CIT-C32/A/F37	CITIZEN CINCOM C32	A	54	48	152,5		1536E / F37		
DH-CIT-E16/B/F25	CITIZEN CINCOM E16	B	45	38	134,5		145E / F25		564-213
DH-CIT-E32/A/F37	CITIZEN CINCOM E32	A	59	50	142		1536E / F37		565-035-2
DH-CIT-E32/A/F42	CITIZEN CINCOM E32	A	59	50	142		171E / F42		565-035-1
DH-CIT-E32/B/F37	CITIZEN CINCOM E32	B	59	50	160		1536E / F37		
DH-CIT-K12/A/F15	CITIZEN CINCOM K12	A	33	28	180		120E / F15		
DH-CIT-K12/A/F16	CITIZEN CINCOM K12	A	33	28	180		1212E / F16	DF16F 12.5-34	563-492 / 4156300310
DH-CIT-K12/B/F8v10	CITIZEN CINCOM K12	B	30	30	110	10	101E / F8		
DH-CIT-K12/B/F10v15	CITIZEN CINCOM K12	B	30	30	126	15	109E / F10		
DH-CIT-K12/B/F13	CITIZEN CINCOM K12	B	30	30	110		116E / F13		
DH-CIT-K12/B/F15	CITIZEN CINCOM K12	B	30	30	110		120E / F15		
DH-CIT-K12/B/F15v15	CITIZEN CINCOM K12	B	30	30	110	15	120E / F15		
DH-CIT-K12/B/F16	CITIZEN CINCOM K12	B	30	30	110		1212E / F16		563-491-1 / 4156300300
DH-CIT-K16/A/F20	CITIZEN CINCOM K16	A	33	28	180		138E / F20	DF20F 18-45	563-494
DH-CIT-K16/A/F22	CITIZEN CINCOM K16	A	33	28	180		140E / F22		
DH-CIT-K16/B/F20	CITIZEN CINCOM K16	B	33	30	110		138E / F20		563-443-1
DH-CIT-K16/B/F22	CITIZEN CINCOM K16	B	33	30	110		140E / F22		
DH-CIT-L16/A/F15	CITIZEN CINCOM L16VI/VII; M20; L20	A	46	35	103		120E / F15		
DH-CIT-L16/A/F25	CITIZEN CINCOM L16VI/VII; M20; L20	A	46	35	103		145E / F25		564-042-2
DH-CIT-L16/A/F25	CITIZEN CINCOM L16I	A	46	35	103		145E / F25		564-117-2
DH-CIT-L16/B/F20	CITIZEN L16	B	44	35	121,5		138E / F20		
DH-CIT-L16/B/F25	CITIZEN CINCOM L16VII; M20	B	44	35	121,5		145E / F25		564-237
DH-CIT-L32/A/F37	CITIZEN CINCOM L32	A	64,5	60	158		1536E / F37		

A = Hauptspindel; B = Abgreifspindel
* Ausverkaufsartikel

A = main spindle; B = sub spindle
* sellout article

Beispiel:
Example:



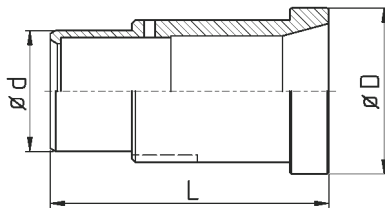
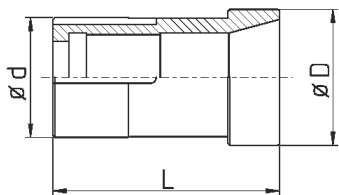
DH-CIT-ML12/A/F16

Artikel-Nr. article-no.	Maschine / Typ machine / type	A / B - Spindel	D	d	L	verl. ext. [mm]	Zange collet	Feder spring	Original Nr. original no.
DH-CIT-L32/B/F37	CITIZEN CINCOM L32	B	53	60	147,5		1536E / F37		
DH-CIT-L220X/B/F25	CITIZEN CINCOM L ₂ 20X	B	42	42	132		145E / F25		564-587
DH-CIT-L520/A/F25	CITIZEN CINCOM L520VIII	A	41,5	35	198		145E / F25		564-396
DH-CIT-L520/A/F27	CITIZEN CINCOM L520VIII	A	41,5	35	198		147E / F27		
DH-CIT-L520/B/F25	CITIZEN CINCOM L520VIII	B	41	35	121,5		145E / F25		564-352
DH-CIT-M12/B/F13	CITIZEN CINCOM M12	B	28	24,5	98		116E / F13		
DH-CIT-M12/B/F15	CITIZEN CINCOM M12	B	28	24,5	98		120E / F15		
DH-CIT-M12/B/F16	CITIZEN CINCOM M12	B	28	24,5	98		1212E / F16		562-576-1
DH-CIT-M16/A/F15	CITIZEN CINCOM M16	A	36	30	108,7		120E / F15		
DH-CIT-M16/A/F16	CITIZEN CINCOM M16	A	36	30	108,7		1212E / F16		4156300240
DH-CIT-M16/A/144E	CITIZEN CINCOM M16	A	36	30	110		144E / F25		4156300400
DH-CIT-M16/B/F10v15	CITIZEN CINCOM M16	B	33	30	127,5	15	109E / F10		
DH-CIT-M16/B/F15v15	CITIZEN CINCOM M16	B	33	30	127,5	15	120E / F15		
DH-CIT-M16/B/F16	CITIZEN CINCOM M16	B	33	30	108,7		1212E / F16		4156300230
DH-CIT-M216/A/F20	CITIZEN CINCOM M ₂ 16	A	36	30	110		138E / F20		563-435
DH-CIT-M216/B/F13v15	CITIZEN CINCOM M ₂ 16	B	33	30	128	15	116E / F13		
DH-CIT-M216/B/F15	CITIZEN CINCOM M ₂ 16	B	33	30	110		120E / F15		
DH-CIT-M216/B/F15v15	CITIZEN CINCOM M ₂ 16	B	33	30	128	15	120E / F15	DF15F 11.5-33	
DH-CIT-M216/B/F16v15	CITIZEN CINCOM M ₂ 16	B	33	30	128	15	1212E / F16		
DH-CIT-M216/B/F20	CITIZEN CINCOM M ₂ 16	B	33	30	110		138E / F20		563-436
DH-CIT-M316/B/F10v15	CITIZEN CINCOM M ₃ 16	B	33	30	127,5	15	109E / F10		4156300520
DH-CIT-M32/B/F20	CITIZEN CINCOM M32	B	53	49	150,5		F20		
DH-CIT-M32/B/F37	CITIZEN CINCOM M32	B	53	49	147,5		1536E / F37		565-188
DH-CIT-M32/B/F40	CITIZEN CINCOM M32	B	53	49	147,5		F40		
DH-CIT-M332/A/F37	CITIZEN CINCOM M ₃ 32	A	54	48	152,5		1536E / F37		565-189-2
DH-CIT-M332/A/F40	CITIZEN CINCOM M ₃ 32	A	54	48	152,5		F40		
DH-CIT-M432/A/F20	CITIZEN CINCOM M ₄ 32	A	58,5	54	152,5		138E / F20		
DH-CIT-M432/A/F25	CITIZEN CINCOM M ₄ 32	A	58,5	54	152,5		145E / F25	DF25F 22-48	
DH-CIT-M432/A/F37	CITIZEN CINCOM M ₄ 32	A	58,5	54	152,5		1536E / F37		565-250-1
DH-CIT-M432/A/F40	CITIZEN CINCOM M ₄ 32	A	58,5	54	152,5		F40	DF40F 36-80	
DH-CIT-M432/B/F20	CITIZEN CINCOM M ₄ 32	B	53	50	147,5		138E / F20		
DH-CIT-M432/B/F25	CITIZEN CINCOM M ₄ 32	B	53	50	147,5		145E / F25	DF25F 22-48	
DH-CIT-M432/B/F37	CITIZEN CINCOM M ₄ 32	B	53	50	147,5		1536E / F37		565-252-1
DH-CIT-M432/B/F40	CITIZEN CINCOM M ₄ 32	B	53	50	147,5		F40		
DH-CIT-ML12/A/F15	CITIZEN CINCOM ML12	A	33	28	109		120E / F15		
DH-CIT-ML12/A/F16	CITIZEN CINCOM ML12	A	33	28	109		1212E / F16		
DH-CIT-R07/B/F8	CITIZEN CINCOM R07	B	22	21	84,3		101E / F8	DF07R 5.5-50	562-757
DH-CIT-R07/B/F10	CITIZEN CINCOM R07	B	23,7	21	80		109E / F10		
DH-CIT-R07/B/F13	CITIZEN CINCOM R07	B	23,7	21	79,5		116E / F13		
DH-CIT-R07/B/F15	CITIZEN CINCOM R07	B	23,7	21	79,5		120E / F15		562-755
DH-CIT-R07/B/F16	CITIZEN CINCOM R07	B	24,3	21	79,5		1212E / F16		
DH-ERGO-B60//F66	ERGOMAT B60		88	74	138		185E / F66		
DH-ERGO-TBA42//F48	ERGOMAT TBA42		74,3	56	113		173E / F48		916725
DH-FEIN-FA15//F22	FEINLER FA15		37/32	27	61		140E / F22		

A = Hauptspindel; B = Abgreifspindel

A = main spindle; B = sub spindle

Beispiel:
Example:



DH-GILD-GLD25//F30

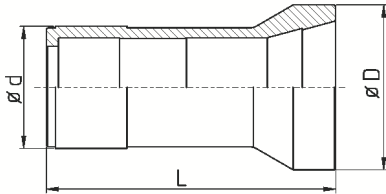
Artikel-Nr. article-no.	Maschine / Typ machine / type	A / B - Spindel	D	d	L	verl. ext. [mm]	Zange collet	Feder spring	Original Nr. original no.
DH-GILD-GD16//136E	GILDEMEISTER GD16		30,6	26	76		136E / F20		
DH-GILD-GLD25//F30	GILDEMEISTER GLD25		47/40	34	78,5		1446E / F30		
DH-GILD-SPRINT20-5/A/F25	GILDEMEISTER SPRINT 20-5	A	40,9	37	89,6		145E / F25		
DH-GILD-SPRINT20-5/A/F30	GILDEMEISTER SPRINT 20-5	A	41	37	88		1446E / F30		
DH-GILD-SPRINT20-5/B/F25	GILDEMEISTER SPRINT 20-5	B	40	37	89,6		145E / F25		
DH-GILD-SPRINT20-8/A/F25	GILDEMEISTER SPRINT 20-8	A	40,6	37	85,5		145E / F25		
DH-GILD-SPRINT20-8/B/F25	GILDEMEISTER SPRINT 20-8	B	40,7	37	84,5		145E / F25		OB2710149
DH-GILD-SPRINT32//F37	GILDEMEISTER SPRINT 32		52,7	46	104,3		1536E / F37		5610101
DH-GILD-SPRINT42/A/F48	GILDEMEISTER SPRINT 42	A	65	57	110,5		173E / F48		T2610184
DH-GILD-SPRINT42/B/F48	GILDEMEISTER SPRINT 42	B	65	57	110,5		173E / F48		OB2613252
DH-HAN-B12//F16	HANWHA B12		24,5	23	89		1212E / F16		
DH-HAN-STL38H/A/F48	HANWHA STL38H	A	70	56	139,2		173E / F48		
DH-HAN-STL38H/B/F42	HANWHA STL38H	B	58,8	52	137,1		171E / F42		
DH-INDE-12//F22	INDEX 12		38	28	68		140E / F22	DF22F 18.5-32	
DH-INDE-25//162E	INDEX 25		52	42	82		162E / F35	DF35F 30-31	
DH-INDE-B30//F28	INDEX B30; C29; E26; ER26; INDEX24		58	42	92		148E / F28	DF28F 23-22	
DH-INDE-B30//F35	INDEX B30; C29; E26; ER26; INDEX24		58	42	92		163E / F35	DF35F 30-31	
DH-INDE-B42//F35	INDEX B42; 36; E42; ER42		70	56	104		163E / F35		
DH-INDE-B42//F48	INDEX B42; 36; E42; ER42		70	56	104		173E / F48	DF48F 42-32	
DH-INDE-B60//F48	INDEX B60; ER60; E60		94	74	120		173E / F48	DF48F 43-38	
DH-INDE-B60//F66	INDEX B60; ER60; E60		94	74	120		185E / F66		
DH-INDE-DG12//F22	INDEX DG12		38	30	63,5		140E / F22		
DH-INDE-DG12//143E	INDEX DG12		38	30	63,5		143E / F25	DF25F 22-25	
DH-INDE-GSC65//F66	INDEX GSC65		94	80	163		185E / F66		L2 108 1.70
DH-INDE-MS25/B/144E	INDEX MS25	B	38	30	63,5		144E / F25		
DH-INDE-MS25/B/144E	INDEX MS25	B	38	30	64		144E / F25		
DH-INDE-MS25/B/9039E/SY	INDEX MS25	B	38	30	73		9039E/SY		
DH-INDE-ON12//136E	INDEX ON12; OR12		32	30	64		136E / F20	DF20F 16-15	
DH-INDE-RN08//F17	INDEX RN08		28	24	64		125E / F17		
DH-MAIE-ML26/A/F32	MAIER ML26D	A	48	46	101,2		161E / F32		
DH-MAIE-ML26/B/F32	MAIER ML26D	B	49	41	93,6		161E / F32		
DH-MIYA-BX26S/A/F32	CITIZEN MIYANO BX26S	A	49	42,5	95		161E / F32		
DH-SAIC-B30//F32	SAIC B30		55	42	96		161E / F32	DF32F 26-32	
DH-SCHE-PM1//F22	SCHERER Feinbau PM1		34	30	57		140E / F22		
DH-SPIN-BK//F35	SPINNER BK-NC		53	45	116,5		163E / F35		
DH-SPIN-PD42//F48	SPINNER PD42		66	55	120		173E / F48		SB-NC-1/1-001
DH-SPIN-TC32//F35	SPINNER TC32		53	45	128,4		163E / F35		
DH-SPIN-TC32//F38	SPINNER TC32		53	45	128,4		164E / F38		
DH-STEI-STF16//F20	STEINHÄUSER STF16		35	28	78		138E / F20		
DH-STEI-STF36//F42	STEINHÄUSER STF36		62	50	110		171E / F42		
DH-STRO-M105//F15	STROHM M105 - 125		24	20	86		120E / F15		
DH-STRO-M125SJ//F15	STROHM M125SJ AS		27/24	20	86		120E / F15		
DH-STRO-M205//F25	STROHM M205		40	35	100		145E / F25		
DH-STRO-M4//F8	STROHM M4-5; TORNOS M4		15	12	66		101E / F8		

A = Hauptspindel; B = Abgreifspindel

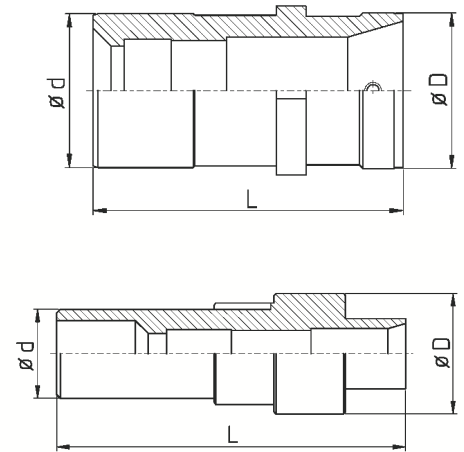
A = main spindle; B = sub spindle

Beispiel:
Example:

DH-TRAU-TD26//F32



DH-TRAU-TNL16//F20



Artikel-Nr. article-no.	Maschine / Typ machine / type	A / B - Spindel	D	d	L	verl. ext. [mm]	Zange collet	Feder spring	Original Nr. original no.
DH-TORN-DECO2000-10//F13	TORNOS Deco2000/10		24/22	18	84,9		116E / F13		
DH-TORN-DECO2000-13/AB/F13v12	TORNOS Deco2000/13	A/B	30	30	102		116E / F13		
DH-TORN-DECO2000-13//136E	TORNOS Deco2000/13		30	30	91		136E / F20		
DH-TORN-DECO2000-20//F25	TORNOS Deco2000/20		42/40	38	105		145E / F25		
DH-TORN-DECO2000-20//F30	TORNOS Deco2000/20		44/40	38	110		1446E / F30		562529
DH-TORN-DECO2000-25//F37	TORNOS Deco2000/25-26		54	50	130		1536E / F37		
DH-TORN-ENC164//136E	TORNOS ENC164		30	30	69		136E / F20		
DH-TORN-M20//F25	TORNOS M20		40	33	109,7		145E / F25		
DH-TORN-MS7//F13	TORNOS MS7		24/22	18	85		116E / F13		
DH-TORN-R10//F15	TORNOS R10		26	22	90		120E / F15		
DH-TORN-SIGMA32/A/F37	TORNOS Sigma32	A	57/54	53	124		1536E / F37		
DH-TORN-SIGMA32/A/F42	TORNOS Sigma32	A	57/54	53	124		171E / F42		
DH-TORN-GAMMA/B/F13v12	TORNOS Gamma	B	38	28	105,2		116E / F13		
<hr/>									
DH-TRAU-A15//F22	TRAUB A15		33	33	52		140E / F22		
DH-TRAU-A20//F22	TRAUB A20		42	34	67		140E / F22		
DH-TRAU-A20//F28	TRAUB A20		42	34	67		148E / F28	DF28F 23.5-8	
DH-TRAU-A25//F22	TRAUB A25		52	37	96		140E / F22	DF22F 18.5-22	
DH-TRAU-A25//F32	TRAUB A25		52	37	96		161E / F32	DF32F 26.5-37	
DH-TRAU-A26//F32	TRAUB A26		52	40	96		161E / F32		
DH-TRAU-A42//F32	TRAUB A42; TB42		75/68	54	114		161E / F32		
DH-TRAU-A60//F48	TRAUB A60		93/86	74	114		173E / F48	DF48F 44-42	
DH-TRAU-A60//F66	TRAUB A60		93/86	74	114		185E / F66		
DH-TRAU-TC15//F22	TRAUB TC15		38	28	70		140E / F22	DF22F 18.5-32	
DH-TRAU-TD26//F32	TRAUB TD26		54	40	95		161E / F32	DF32F 26.5-37	
<hr/>									
DH-TRAU-TNL12/A/F15	TRAUB TNL12	A	25	25	75		120E / F15		
DH-TRAU-TNL12/A/F16	TRAUB TNL12	A	25	25	75		1212E / F16		
DH-TRAU-TNL12/B/F15	TRAUB TNL12	B	25	21	88		120E / F15		987117
DH-TRAU-TNL16//144E	TRAUB TNL16		35	30	88		144E / F25		
DH-TRAU-TNL127//136E	TRAUB TNL12/7		26,9	25	76		136E / F20		
DH-TRAU-TNL12K//F16	TRAUB TNL12K		30	30	75		1212E / F16		
DH-TRAU-TNL16//F20	TRAUB TNL16		35	30	88		138E / F20		
DH-TRAU-TNL26vst/A/157E	TRAUB TNL26	A	56	46,5/46	122,3		157E / F30		983926
DH-TRAU-TNL26/A/157E	TRAUB TNL26	A	54	46	122,2		157E / F30		984925
DH-TRAU-TNL26/B/157E	TRAUB TNL26	B	46,5	50,5/46	92,8		157E / F30		
DH-TRAU-TNS42//F48	TRAUB TNS42		70	60	135		173E / F48		710779
DH-TRAU-TNA42//F48	TRAUB TNA42		68	60	136		173E / F48		
<hr/>									
DH-TSUG-BN20//F25	TSUGAMI BN20		39,9	36	93,2		145E / F25		
DH-TSUG-BS32/A/F37	TSUGAMI BS32	A	47	45	129		1536E / F37		
DH-TSUG-HS207/B/F15v15	TSUGAMI HS207	B	38/32	28	111,1	15	120E / F15		
DH-TSUG-HS207/B/F25	TSUGAMI HS207	B	38/32	28	92		145E / F25		

A = Hauptspindel; B = Abgreifspindel

A = main spindle; B = sub spindle

Identische Druckhülsen unterschiedlicher Maschinentypen Identical collet sleeves for different machine types

Spindel spindle	A	B	Standardzange standard collet	Spindel spindle	A	B	Standardzange standard collet	Spindel spindle	A	B	Standardzange standard collet
Maschine machine				Maschine machine				Maschine machine			
SW7	1		F15 / 120E	ECAS20	7	12	F25 / 145E	ECAS32	13	15	F37 / 1536E
SR10J	1	23		KNC20	10			JNC32	14	15	
SL10		23		SB20	8	11		KNC32	14	15	
			SB20RE	7	11	SR32		14	15		
SB12RE	19	21	F16 / 1212E	SB20RN	9	11		SR32J (alt)	14	15	
SB12RG	19	21		SB20RG	9	11		SR32J (neu)	13	15	
SB12RN	19	21		SR20	10	11		SR32JII	20	22	
SW12RII	19			SR20J	8	11		SR32JN	13	15	
				SR20JII	9	12		SV32	13	15	
SA12	2	4	F20 / 138E	SR20JN		11		SV32J	13	15	
SA16	2	4		SR20R I / II / III	7	11	VNC32	14	15		
SB12	2	4		SR20R IV	9	12					
SB16	2	4		SV20	8	11	ST38		16		
ECAS12	3	5		SV20-R	9	12	SV38R	18	16		
ECAS16		5		SW20	7	12	SR38	18	16		
SV12	3	4		ST20	7	12	SX38	18	16		
JNC16	2			VNC20	10						
KJR16	2	6									
RNC16 (neu)	2										
SA16R	3	4									
SR16	2	6									
SR16R	7 _{red}	11 _{red}									
SST16	2	6									

**Hauptspindel (A)
Gegenspindel (B)**

**Main spindle (A)
Sub spindle (B)**

Maschinen mit gleicher Nummer haben identische Druckhülsen.

Machines with identical number have identical collet sleeves.

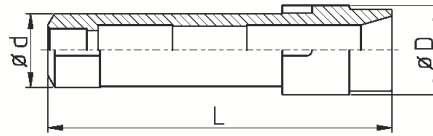
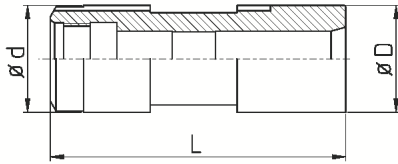
Ist keine Nummer angegeben, gibt es keine weiteren kompatiblen Maschinen.

If there is no number written there is no further machine compatible.

Sind die Druckhülsen mehrerer Maschinen miteinander kompatibel, werden nur die Druckhülsen der grauunterlegten Maschinen in den Maßtabellen aufgeführt.

If collet sleeves of different machines are identical only the grey marked machine types will be found in the list on the next pages.

Beispiel:
Example:



DH-STAR-SA12/B/F15

Artikel-Nr. article-no.	Maschine / Typ machine / type	A / B - Spindel	kleinster ID smallest inner diam.	D	d	L	verl. ext. [mm]	Zange collet	Feder spring	Original Nr. original no.
DH-STAR-SW7/B/F7v15	STAR SW7	B	5,0	27	21	109	15	1010E / F7		
DH-STAR-SW7/B/F10v17	STAR SW7	B	8,5	27	21	109	17	109E / F10		
DH-STAR-SW7/B/F15	STAR SW7	B	11,5	27	21	90		120E / F15		382-32-030
DH-STAR-SR10J/A/F8	STAR SR10J	A	6,5	27	21	83		101E / F8		
DH-STAR-SR10J/A/F15	STAR SR10J	A	11,0	27	21	83		120E / F15	DF15F 11.5-28	380-32-020
DH-STAR-SR10J/B/F8v10	STAR SR10J	B	6,5	24	20	92,5	10	101E / F8	DF08R 5.4-25	
DH-STAR-SR10J/B/F10v15	STAR SR10J	B	8,5	24	20	97,5	15	109E / F10		
DH-STAR-SR10J/B/F13	STAR SR10J	B	10,5	24	20	81		116E / F13		
DH-STAR-SR10J/B/F13v10	STAR SR10J	B	10,5	24	20	92,5	10	116E / F13	DF13R 10-36	
DH-STAR-SR10J/B/F13v15	STAR SR10J	B	10,5	24	20	97,5	15	116E / F13		
DH-STAR-SR10J/B/F15	STAR SR10J	B	11,5	24	20	81		120E / F15	DF15F 11.5-28	69372-010 40140
DH-STAR-SL10/A/F15	STAR SL10	A	12,5	31,5	27	89,5		120E / F15		38850
DH-STAR-SA12/A/F20	STAR SA12	A	16,5	42	34	87		138E / F20	DF20F 16.5-30	210-34-040
DH-STAR-SA12/A/F22	STAR SA12	A		42	34	87		140E / F22		
DH-STAR-SA12/A/144E	STAR SA12	A		42	34	87		144E / F25	DF25F 22-33	
DH-STAR-SA12/B/F10v15	STAR SA12	B	8,5	31,5	31,5	104,7	15	109E / F10		
DH-STAR-SA12/B/F15	STAR SA12	B	15,0	31,5	31,5	88,5		120E / F15		
DH-STAR-SA12/B/F20	STAR SA12	B	19,4	31,5	31,5	87,5		138E / F20	DF20F 17-25	45371-010 46373-010
DH-STAR-SB12RG/A/F10	STAR SB12R-G	A	8,5	30	27	90		109E / F10		
DH-STAR-SB12RG/A/F15	STAR SB12R-G	A	13,2	30	27	90		120E / F15	DF15F 11.5-33	
DH-STAR-SB12RG/A/F16	STAR SB12R-G	A	13,2	30	27	90		1212E / F16		1L353-010
DH-STAR-SB12RG/A/136E	STAR SB12R-G	A	16,5	30	27	90		136E / F20		
DH-STAR-SB12RG/B/F15	STAR SB12R-G	B	15,0	42	35	106		120E / F15		
DH-STAR-SB12RG/B/F16	STAR SB12R-G	B	15,8	42	35	106		1212E / F16		0M393-020
DH-STAR-ECAS12/B/F20	STAR ECAS12	B	19,0	37,5	34	96		138E / F20		57379-010
DH-STAR-SV12/A/F10v48	STAR SV12	A	10,0	38,5	34	144	48	109E / F10		
DH-STAR-SV12/A/F20	STAR SV12	A	16,8	39,5	34	93		138E / F20		
DH-STAR-SW12R/B/F10v10	SW12R II	B	8,5	29,5	27	101	10	109E / F10		
DH-STAR-SW12R/B/F10v15	SW12R II	B	8,3	29,5	27	106,5	15	109E / F10		
DH-STAR-SW12R/B/F13	SW12R II	B	13	29,5	27	90,5		116E / F13		
DH-STAR-SW12R/B/F15	SW12R II	B	15,0	29,5	27	90,5		120E / F15		
DH-STAR-SW12R/B/F16	SW12R II	B	16,0	29,5	27	90,5		1212E / F16		
DH-STAR-SW12R/B/136E	SW12R II	B	17,0	29,5	27	90,5		136E / F20		
DH-STAR-SR16/B/F20	STAR SR16	B		35	31	122		138E / F20		
DH-STAR-SR16R/B/F20	STAR SR16R	B	19,0	42	35	104		138E / F20		54387-020
DH-STAR-RNC16/B/F20	STAR RNC16	B	14,0	31	26	90		138E / F20		270-84-011
DH-STAR-RNC16alt/B/F15v15	STAR RNC16 alt	B	14,0	25	24	105		120E / F15		
DH-STAR-ECAS20/B/F8v15	STAR ECAS20	B	6,5	41,5	38/35	122	15	101E / F8		
DH-STAR-ECAS20/B/F10v15	STAR ECAS20	B	8,5	41,5	38/35	121,5	15	109E / F10	DF10R 7-24	
DH-STAR-ECAS20/B/F13v15	STAR ECAS20	B	10,5	41,5	38/35	120,8	15	116E / F13		
DH-STAR-ECAS20/B/F15v15	STAR ECAS20	B	12,0	41,5	38/35	120,8	15	120E / F15	DF15F 11.5-33	
DH-STAR-ECAS20/B/F16v15	STAR ECAS20	B	13,0	41,5	38/35	120,8	15	1212E / F16	DF16F 12.5-34	
DH-STAR-ECAS20/B/136E	STAR ECAS20	B	20,5	41,5	38/35	104,5		136E / F20		
DH-STAR-ECAS20/B/F25	STAR ECAS20	B	24,0	41,5	38/35	101,5		145E / F25	DF25F 22-25	57372-010
DH-STAR-ECAS20/B/F27	STAR ECAS20	B	24,0	41,5	38/35	101,6		147E / F27	DF27F 23-28	

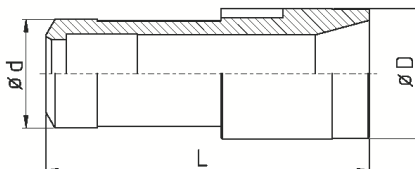
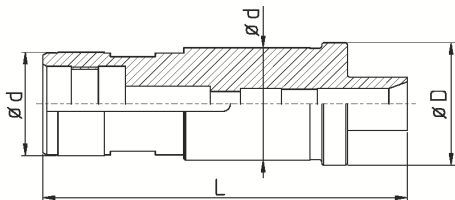
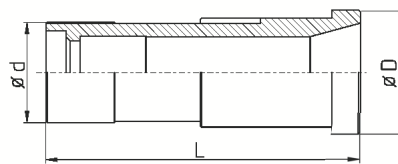
A = Hauptspindel; B = Abgreifspindel

A = main spindle; B = sub spindle

Beispiel:
Example:



DH-STAR-ECAS20/B/F10v15



DH-STAR-SR20R/A/F25

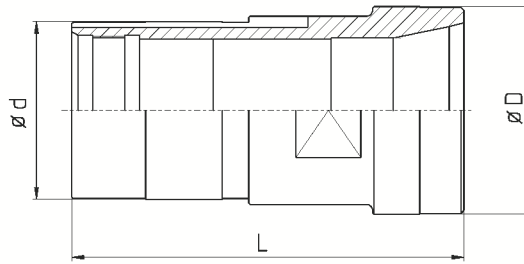
Artikel-Nr. article-no.	Maschine / Typ machine / type	A / B - Spindel	kleinster ID smallest inner diam.	D	d	L	verl. ext. [mm]	Zange collet	Feder spring	Original Nr. original no.
DH-STAR-ECAS20/B/F27L #	STAR ECAS20	B	24,0	41,5	38/35	104,5		147E / F27	DF27F 23-35	
DH-STAR-ECAS20HS/B/F20	STAR ECAS20	B	16,5	31,5	27	106		138E / F20		
DH-STAR-SR20/A/F10v15	STAR SR20	A		42	35	122	15	109E / F10		
DH-STAR-SR20/A/F25	STAR SR20	A	24,0	42	35	104,5		145E / F25	DF25F 22-44	320-34-100
DH-STAR-SR20JN/A/F25	STAR SR20JN	A	21,0	42	35	101		145E / F25		0E357-010
DH-STAR-SR20JN/A/F27	STAR SR20JN	A	23,5	42	35	103		147E / F27	DF27F 23-32	
DH-STAR-SR20R/A/F15	STAR SR20R I / II / III	A	13,0	43,4	38/35	114		120E / F15		
DH-STAR-SR20R/A/F20	STAR SR20R I / II / III	A	17,5	43,4	38/35	110		138E / F20		
DH-STAR-SR20R/A/F25	STAR SR20R I / II / III	A	22,0	43,4	38/35	110		145E / F25	DF25F 22-44	54823-010
DH-STAR-SR20R/A/F27	STAR SR20R I / II / III	A	24,0	43,4	38/35	110		147E / F27	DF27F 23-35	
DH-STAR-SR20R/B/F8v15	STAR SR20R I / II / III	B	6,5	42	35	121,5	15	101E / F8	DF08R 5.4-25	
DH-STAR-SR20R/B/F10v15	STAR SR20R I / II / III	B	8,5	42	35	121,5	15	109E / F10	DF10R 7-24	
DH-STAR-SR20R/B/F15v10	STAR SR20R I / II / III	B	12,0	42	35	104	10	120E / F15		
DH-STAR-SR20R/B/F15v15	STAR SR20R I / II / III	B	12,0	42	35	120,3	15	120E / F15		
DH-STAR-SR20R/B/F16v10	STAR SR20R I / II / III	B	13,0	42	35	115,3	10	1212E / F16		
DH-STAR-SR20R/B/F16v15	STAR SR20R I / II / III	B	13,0	42	35	120,3	15	1212E / F16		
DH-STAR-SR20R/B/F20	STAR SR20R I / II / III	B	20,0	42	35	104		138E / F20		
DH-STAR-SR20R/B/136E	STAR SR20R I / II / III	B	17,0	42	35	106		136E / F20		
DH-STAR-SR20R/B/F25	STAR SR20R I / II / III	B	23,0	42	35	101		145E / F25	DF25F 22-25	42375-020 532-32-190
DH-STAR-SR20R/B/F27	STAR SR20R I / II / III	B	24,0	42	35	101		147E / F27	DF27F 23-28	
DH-STAR-SR20R/B/F27L #	STAR SR20R I / II / III	B	24,0	42	35	103		147E / F27		
DH-STAR-SR20R4/A/F15v15	STAR SR20R IV	A	12,0	43,5	38/35	126,3	15	120E / F15	DF15F 11.5-28	
DH-STAR-SR20R4/A/F25	STAR SR20R IV	A	20,5	43,5	38/35	107		145E / F25	DF25F 22-44	OM353-010 OT353-010
DH-STAR-SR20R4/A/F27	STAR SR20R IV	A	24,0	43,5	38/35	109		147E / F27	DF27F 23-35	
DH-STAR-SV20/A/F20	STAR SV20	A	17,5	42	35	104		138E / F20		
DH-STAR-SV20/A/F25	STAR SV20	A	22,0	42	35	104		145E / F25		42355-020
DH-STAR-SV20/A/F27	STAR SV20	A	24,5	42	35	104		147E / F27	DF27F 23-35	
DH-STAR-SR32/A/F37	STAR SR32	A	33,0	56	48	136		1536E / F37	DF37F 33-80	200-34-010
DH-STAR-SR32JII/A/F37	STAR SR32JII	A	32,8	55	51	140		1536E / F37		PO-12050
DH-STAR-SR32JII/A/F40	STAR SR32JII	A	36,5	55	51	140		F40		
DH-STAR-SR32JII/B/F37	STAR SR32JII	B	36,5	55	51	125		1536E / F37		PO12300
DH-STAR-SR32JII/B/F40	STAR SR32JII	B	36,5	55	51	125		F40		

A = Hauptspindel; B = Abgreifspindel
verlängert auf normale Länge

A = main spindle; B = sub spindle
extended to normal length

Beispiel:
Example:

DH-STAR-ST38/B/F48



Artikel-Nr. article-no.	Maschine / Typ machine / type	A / B - Spindel	kleinster ID smallest inner diam.	D	d	L	verl. ext. [mm]	Zange collet	Feder spring	Original Nr. original no.
DH-STAR-SV32/A/F25	STAR SV32	A		56	48	140		145E / F25		
DH-STAR-SV32/A/F30	STAR SV32	A	26,6	56	48	140		1446E / F30		
DH-STAR-SV32/A/F37	STAR SV32	A	33,0	56	48	140		1536E / F37		430-34-010
DH-STAR-SV32/A/F40	STAR SV32	A	36,5	56	48	140		F40	DF40F 36-60	
DH-STAR-SV32/B/F20v20	STAR SV32	B	17,0	55	51	148	20	138E / F20		
DH-STAR-SV32/B/F25	STAR SV32	B	22,0	55	51	125		145E / F25	DF25F 21,5-25	
DH-STAR-SV32/B/F30	STAR SV32	B	26,6	55	51	129		1446E / F30		
DH-STAR-SV32/B/F37	STAR SV32	B	37,0	55	51	125		1536E / F37	DF37F 33-38	432-34-020 202-32-090 580-89-020
DH-STAR-SV32/B/F40	STAR SV32	B	37,0	55	51	125		F40	DF40F 36.5-37	
DH-STAR-ST38/A/F37	STAR ST38	A	33,0	70	63,5/60	131,5		1536E / F37		0B353-010
DH-STAR-ST38/A/F42	STAR ST38	A	36,0	70	63,5/60	133		171E / F42		
DH-STAR-ST38/A/F48	STAR ST38	A	43,0	70	63,5/60	133		173E / F48		0B351-010
DH-STAR-ST38/B/F37	STAR ST38	B	37,0	70	63,5/60	131,5		1536E / F37		0B373-020
DH-STAR-ST38/B/F25v20	STAR ST38	B	21,0	70	63,5/60	153	20	145E / F25	DF25F 22-44	
DH-STAR-ST38/B/F42	STAR ST38	B	42,0	70	63,5/60	133		171E / F42		
DH-STAR-ST38/B/F48	STAR ST38	B	48,0	70	63,5/60	133		173E / F48		0B371-020
DH-STAR-SV38R/A/F37	STAR SV38 R	A	33,0	61	62	131,5		1536E / F37		1A353-010
DH-STAR-SV38R/A/F48	STAR SV38 R	A	43,0	69,5	62	133		173E / F48		1A351-010

A = Hauptspindel; B = Abgreifspindel

A = main spindle; B = sub spindle