

2020






IN3 PART

Spindelzubehör  
*Spindle Attachment*



*passion for clamping*



			Seite Page
<i>Collet Sleeves</i>		Druckhülsen	3
<i>Cap Nuts for Collet Sleeves</i>		Überwurfmuttern für Druckhülsen	17
<i>Pressure Springs</i>		Druckfedern	27
<i>Guide Bush Nuts</i>		Führungsbüchsen- Anzugsmuttern	32
<i>Toggles / Chuck Levers</i>		Spannfinger	36

## Technische Informationen

## Technical Information

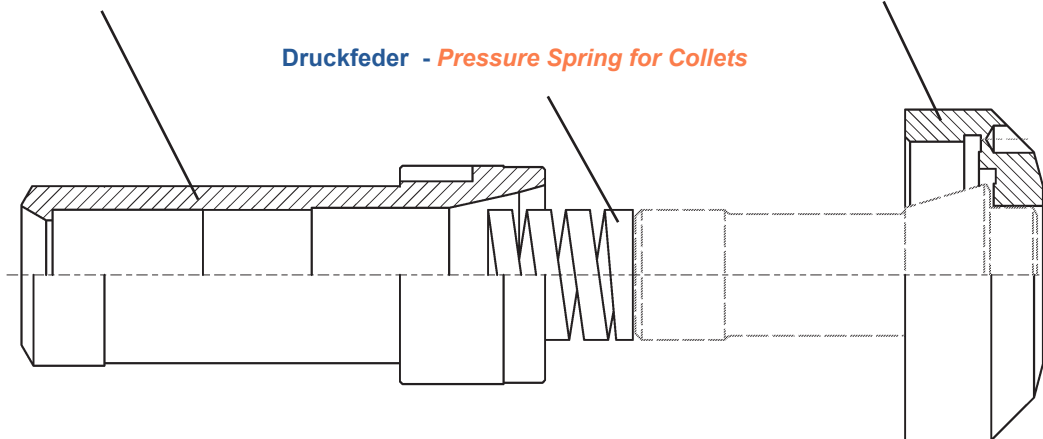
### Ein Set besteht aus:

### Set consists of:

Druckhülse - *Collet Sleeve*

Überwurfmutter - *Cap Nut for Collet Sleeves*

Druckfeder - *Pressure Spring for Collets*



+ Führungsbüchsen-Anzugsmutter - nur bei Hauptspindelerweiterung und nur falls vorhanden  
 + *Guide Bush Nut - only for main spindle extension and only if available*

### Einzelteile:

### Component parts

Druckhülsen	ab S. 3	<i>Collet Sleeve</i>	<i>from page 3</i>
Überwurfmuttern	ab S. 17	<i>Cap Nuts for Collet Sleeves</i>	<i>from page 17</i>
Druckfedern für Spannzangen	ab S. 27	<i>Pressure Springs for Collets</i>	<i>from page 27</i>
Führungsbüchsen-Anzugsmuttern	ab S. 32	<i>Guide Bush Nuts</i>	<i>from page 32</i>

### Bestell-Nr. bei Set-Bestellung:

### Order-no. to order a set:

SET - Maschinenhersteller - Maschinentyp / Haupt- (A) oder Gegenspindel (B) / Zange  
*SET - machine manufacturer - machine type / main (A) or sub (B) spindle / collet*

### Beispiel:

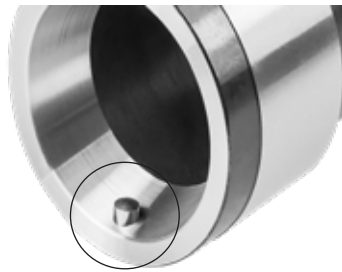
### Example:

SET - STAR - SR20R / B / F27

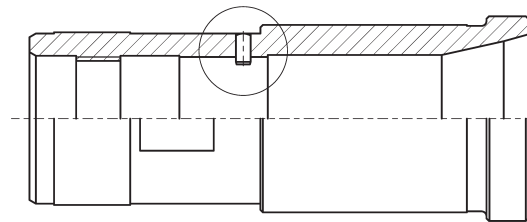
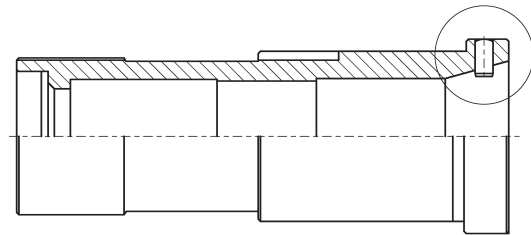
# Druckhülsen *Collet Sleeves*



*passion for clamping*

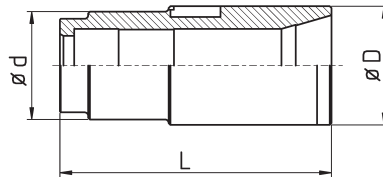
**Technische Informationen****Technical Information****Verstiften von Druckhülsen**

auf Wunsch mit Aufpreis

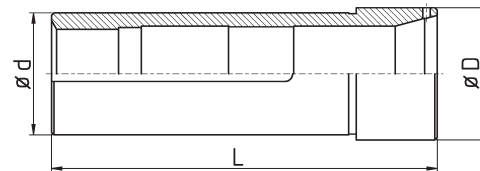
**Pinned Collet Sleeves**

*optional for extra charge*

DH-BENZ-TNI20/F20



DH-CIT-C32/A/F37

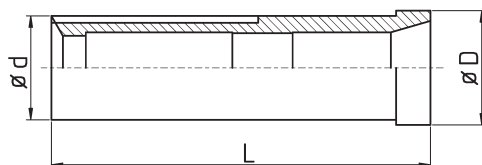


DH-CIT-A20/B/F25

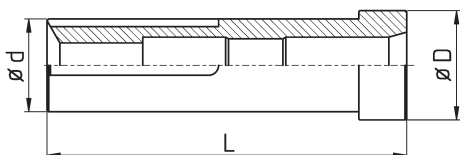
Bestell-Nr. order-no.	Maschine / Typ machine / type	A / B - Spindel	D	d	L	verl. ext. [mm]	Zange collet	Feder spring
DH-BECH-AR10//F14	BECHLER AR10		24	20	62		117E / F14	
DH-BENZ-TNI20/F20	BENZINGER TNI 20		33	30/26	75,5		138E / F20	
DH-BOLE-BC42//F48	BOLEY BC42		64,5	60	160,2		173E / F48	
DH-CIT-A20/AB/F25	CITIZEN CINCOM A20	A + B	44	42/40	126		145E / F25	
DH-CIT-A32/A/F37	CITIZEN CINCOM A32	A	61	58	171		1536E / F37	
DH-CIT-A32/A/F40	CITIZEN CINCOM A32	A	61	58	171		F40	
DH-CIT-A32/B/F37	CITIZEN CINCOM A32	B	58	54	147,7		1536E / F37	
DH-CIT-A32CL/A/F37	CITIZEN CINCOM A32VII CL	A	65	55	170		1536E / F37	
DH-CIT-A32CL/A/F40	CITIZEN CINCOM A32VII CL	A	65	55	170		F40	
DH-CIT-A320/AB/F25	CITIZEN CINCOM A <sub>3</sub> 20	A+B	42	42	127		145E / F25	
DH-CIT-B12/A/F15	CITIZEN CINCOM B12	A	24,5	23	89		120E / F15	DF15F 11.5-33
DH-CIT-B12E/A/F15	CITIZEN CINCOM B12E	A	33	28	109		120E / F15	
DH-CIT-B12/A/F16	CITIZEN CINCOM B12	A	24,5	23	89		1212E / F16	
DH-CIT-B12/B/F10v10	CITIZEN CINCOM B12	B	28	23	90	10	109E / F10	
DH-CIT-B12/B/F13	CITIZEN CINCOM B12	B	28	23	90		116E / F13	DF13R 10-36
DH-CIT-B12/B/F15	CITIZEN CINCOM B12	B	28	23	90		120E / F15	
DH-CIT-B12/B/F16	CITIZEN CINCOM B12	B	28	23	90		1212E / F16	
DH-CIT-C16/A/F22	CITIZEN CINCOM C16	A	--	--	--		140E / F22	
DH-CIT-C32/A/F37	CITIZEN CINCOM C32	A	52	48	152		1536E / F37	
DH-CIT-E32/A/F37	CITIZEN CINCOM E32	A	59	50	142		1536E / F37	
DH-CIT-E32/B/F37	CITIZEN CINCOM E32	B	59	50	160		1536E / F37	
DH-CIT-K12/A/F15	CITIZEN CINCOM K12	A	33	28	180		120E / F15	
DH-CIT-K12/A/F16	CITIZEN CINCOM K12	A	33	25	180		1212E / F16	DF16F 12.5-34
DH-CIT-K12/B/F8v10	CITIZEN CINCOM K12	B	30	30	110	10	101E / F8	
DH-CIT-K12/B/F10v15	CITIZEN CINCOM K12	B	30	30	126	15	109E / F10	
DH-CIT-K12/B/F13	CITIZEN CINCOM K12	B	30	30	110		116E / F13	
DH-CIT-K12/B/F15	CITIZEN CINCOM K12	B	30	30	110		120E / F15	
DH-CIT-K12/B/F15v15	CITIZEN CINCOM K12	B	30	30	110	15	120E / F15	
DH-CIT-K12/B/F16	CITIZEN CINCOM K12	B	30	30	110		1212E / F16	
DH-CIT-K16/A/F20	CITIZEN CINCOM K16	A	33	28	180		138E / F20	DF20F 18-45
DH-CIT-K16/A/F22	CITIZEN CINCOM K16	A	33	28	180		140E / F22	

A = Hauptspindel - main spindle    B = Abgreifspindel - sub spindle

DH-CIT-M216/B/F20



DH-CIT-ML12/A/F16



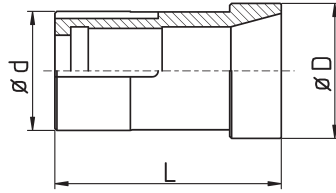
DH-CIT-ML12/A/F16

Bestell-Nr. order-no.	Maschine / Typ machine / type	A / B - Spindel	D	d	L	verl. ext. [mm]	Zange collet	Feder spring
DH-CIT-K16/B/F20	CITIZEN CINCOM K16	B	33	30	110		138E / F20	
DH-CIT-L16/A/F25	CITIZEN CINCOM L16VI/VII; M20; L20	A	46	35	103		145E / F25	
DH-CIT-L16/B/F20	CITIZEN L16	B	44	35	121,5		138E / F20	
DH-CIT-L16/B/F25	CITIZEN CINCOM L16VII; M20	B	44	35	121,5		145E / F25	
DH-CIT-L32/A/F37	CITIZEN CINCOM L32	A	64,5	60	158		1536E / F37	
DH-CIT-L32/B/F37	CITIZEN CINCOM L32	B	53	60	147,5		1536E / F37	
DH-CIT-L220X/B/F25	CITIZEN CINCOM L <sub>2</sub> 20X	B	42	42	132		145E / F25	
DH-CIT-L520/A/F25	CITIZEN CINCOM L520VIII	A	41,5	35	198		145E / F25	
DH-CIT-L520/A/F27	CITIZEN CINCOM L520VIII	A	41,5	35	198		147E / F27	
DH-CIT-L520/B/F25	CITIZEN CINCOM L520VIII	B	41	35	121,5		145E / F25	
DH-CIT-M12/B/F13	CITIZEN CINCOM M12	B	28	24,5	98		116E / F13	
DH-CIT-M12/B/F15	CITIZEN CINCOM M12	B	28	24,5	98		120E / F15	
DH-CIT-M12/B/F16	CITIZEN CINCOM M12	B	28	24,5	98		1212E / F16	
DH-CIT-M16/A/F15	CITIZEN CINCOM M16	A	36	30	108,7		120E / F15	
DH-CIT-M16/A/F16	CITIZEN CINCOM M16	A	36	30	108,7		1212E / F16	
DH-CIT-M16/A/144E	CITIZEN CINCOM M16	A	36	30	110		144E / F25	
DH-CIT-M16/B/F10v15	CITIZEN CINCOM M16	B	33	30	127,5	15	109E / F10	
DH-CIT-M16/B/F15v15	CITIZEN CINCOM M16	B	33	30	127,5	15	120E / F15	
DH-CIT-M16/B/F16	CITIZEN CINCOM M16	B	33	30	108,7		1212E / F16	
DH-CIT-M216/A/F20	CITIZEN CINCOM M <sub>2</sub> 16	A	36	30	110		138E / F20	
DH-CIT-M216/B/F13v15	CITIZEN CINCOM M <sub>2</sub> 16	B	33	30	128	15	116E / F13	
DH-CIT-M216/B/F15	CITIZEN CINCOM M <sub>2</sub> 16	B	33	30	110		120E / F15	
DH-CIT-M216/B/F15v15	CITIZEN CINCOM M <sub>2</sub> 16	B	33	30	128	15	120E / F15	DF15F 11.5-33
DH-CIT-M216/B/F16v15	CITIZEN CINCOM M <sub>2</sub> 16	B	33	30	128	15	1212E / F16	
DH-CIT-M216/B/F20	CITIZEN CINCOM M <sub>2</sub> 16	B	33	30	110		138E / F20	
DH-CIT-M316/B/F10v15	CITIZEN CINCOM M <sub>3</sub> 16	B	33	30	127,5	15	109E / F10	
DH-CIT-M32/B/F20	CITIZEN CINCOM M32	B	53	49	147,5		F20	
DH-CIT-M32/B/F37	CITIZEN CINCOM M32	B	53	49	147,5		1536E / F37	
DH-CIT-M32/B/F40	CITIZEN CINCOM M32	B	53	49	147,5		F40	
DH-CIT-M332/A/F37	CITIZEN CINCOM M <sub>3</sub> 32	A	54	48	152,5		1536E / F37	
DH-CIT-M332/A/F40	CITIZEN CINCOM M <sub>3</sub> 32	A	54	48	152,5		F40	
DH-CIT-M432/A/F20	CITIZEN CINCOM M <sub>4</sub> 32	A	58,5	54	152,5		138E / F20	
DH-CIT-M432/A/F25	CITIZEN CINCOM M <sub>4</sub> 32	A	58,5	54	152,5		145E / F25	DF25F 22-48
DH-CIT-M432/A/F37	CITIZEN CINCOM M <sub>4</sub> 32	A	58,5	54	152,5		1536E / F37	
DH-CIT-M432/A/F40	CITIZEN CINCOM M <sub>4</sub> 32	A	58,5	54	152,5		F40	DF40F 36-80

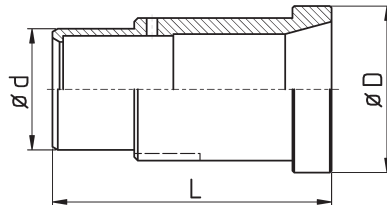
A = Hauptspindel - main spindle    B = Abgreifspindel - sub spindle



DH-FEIN-FA15//F22



DH-GILD-GLD25//F30

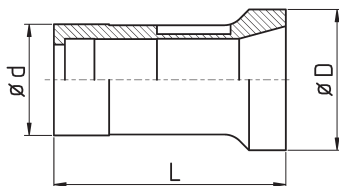


DH-GILD-GLD25//F30

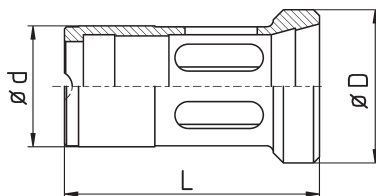
Bestell-Nr. order-no.	Maschine / Typ machine / type	A / B - Spindel	D	d	L	verl. ext. [mm]	Zange collet	Feder spring
DH-CIT-M432/B/F20	CITIZEN CINCOM M <sub>4</sub> 32	B	53	50	147,5		138E / F20	
DH-CIT-M432/B/F25	CITIZEN CINCOM M <sub>4</sub> 32	B	53	50	147,5		145E / F25	DF25F 22-48
DH-CIT-M432/B/F37	CITIZEN CINCOM M <sub>4</sub> 32	B	53	50	147,5		1536E / F37	
DH-CIT-M432/B/F40	CITIZEN CINCOM M <sub>4</sub> 32	B	53	50	147,5		F40	
DH-CIT-ML12/A/F15	CITIZEN CINCOM ML12	A	33	28	109		120E / F15	
DH-CIT-ML12/A/F16	CITIZEN CINCOM ML12	A	33	28	109		1212E / F16	
DH-CIT-R07/B/F8	CITIZEN CINCOM R07	B	21,7	21	81,3		101E / F8	DF07R 5.5-50
DH-CIT-R07/B/F10	CITIZEN CINCOM R07	B	23,7	21	80		109E / F10	
DH-CIT-R07/B/F13	CITIZEN CINCOM R07	B	23,7	21	79,5		116E / F13	
DH-CIT-R07/B/F15	CITIZEN CINCOM R07	B	23,7	21	79,5		120E / F15	
DH-CIT-R07/B/F16	CITIZEN CINCOM R07	B	24,3	21	79,5		1212E / F16	
DH-ERGO-B60//F66	ERGOMAT B60		88	74	138		185E / F66	
DH-ERGO-TBA42//F48	ERGOMAT TBA42		74,3	56	113		173E / F48	
DH-FEIN-FA15//F22	FEINLER FA15		37/32	27	61		140E / F22	
DH-GILD-GD16//F20	GILDEMEISTER GD16		30,6	26	76		136E / F20	
DH-GILD-GLD25//F30	GILDEMEISTER GLD25		47/40	34	78,5		1446E / F30	
DH-GILD-SPRINT20-5/A/F25	GILDEMEISTER SPRINT 20-5	A	40,9	37	89,6		145E / F25	
DH-GILD-SPRINT20-5/A/F30	GILDEMEISTER SPRINT 20-5	A	41	37	88		1446E / F30	
DH-GILD-SPRINT20-5/B/F25	GILDEMEISTER SPRINT 20-5	B	40	37	89,6		145E / F25	
DH-GILD-SPRINT20-8/A/F25	GILDEMEISTER SPRINT 20-8	A	40,6	37	85,5		145E / F25	
DH-GILD-SPRINT20-8/B/F25	GILDEMEISTER SPRINT 20-8	B	40,7	37	84,5		145E / F25	
DH-GILD-SPRINT32//F37	GILDEMEISTER SPRINT 32		52,7	46	104,3		1536E / F37	
DH-GILD-SPRINT42/A/F48	GILDEMEISTER SPRINT 42	A	65	57	110,5		173E / F48	
DH-GILD-SPRINT42/B/F48	GILDEMEISTER SPRINT 42	B	65	57	110,5		173E / F48	

A = Hauptspindel - main spindle    B = Abgreifspindel - sub spindle

DH-INDE-DG12//F22



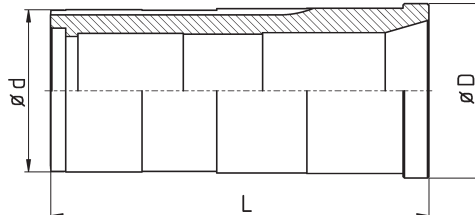
DH-INDE-MS25/B/144E



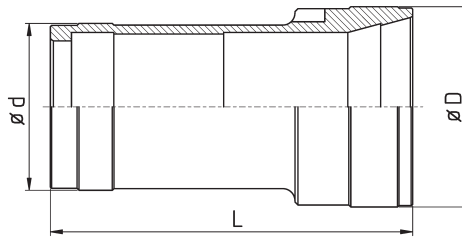
Bestell-Nr. order-no.	Maschine / Typ machine / type	A / B - Spindel	D	d	L	verl. ext. [mm]	Zange collet	Feder spring
DH-HAN-B12//F16	HANWHA B12		24,5	23	89		1212E / F16	
DH-HAN-STL38H/A/F48	HANWHA STL38H	A	70	56	139,2		173E / F48	
DH-HAN-STL38H/B/F42	HANWHA STL38H	B	58,8	52	137,1		173E / F48	
DH-INDE-12//F22	INDEX 12		38	28	68		140E / F22	DF22F 18.5-32
DH-INDE-25//162E	INDEX 25		52	42	82		162E / F35	DF35F 30-31
DH-INDE-B30//F28	INDEX B30; C29; E26; ER26; INDEX24		58	42	92		148E / F28	DF28F 23-22
DH-INDE-B30//F35	INDEX B30; C29; E26; ER26; INDEX24		58	42	92		163E / F35	DF35F 30-31
DH-INDE-B42//F35	INDEX B42; 36; E42; ER42		70	56	104		163E / F35	
DH-INDE-B42//F48	INDEX B42; 36; E42; ER42		70	56	104		173E / F48	DF48F 42-32
DH-INDE-B60//F48	INDEX B60; ER60; E60		94	74	120		173E / F48	DF48F 43-38
DH-INDE-B60//F66	INDEX B60; ER60; E60		94	74	120		185E / F66	
DH-INDE-DG12//F22	INDEX DG12		38	30	63,5		140E / F22	
DH-INDE-DG12//143E	INDEX DG12		38	30	63,5		143E / F25	DF25F 22-25
DH-INDE-GSC65//F66	INDEX GSC65		94	80	163		185E / F66	
DH-INDE-MS25/B/144E	INDEX MS25	B	38	30	63,5		144E / F25	

A = Hauptspindel - main spindle    B = Abgreifspindel - sub spindle

DH-TORN-SIGMA32/A/F37



DH-SPIN-PD42//F48

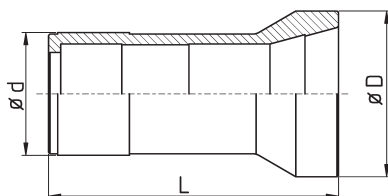


DH-SPIN-PD42//F48

Bestell-Nr. order-no.	Maschine / Typ machine / type	A / B - Spindel	D	d	L	vert. ext. [mm]	Zange collet	Feder spring
DH-INDE-MS25/B/144E	INDEX MS25	B	38	30	64		144E / F25	
DH-INDE-MS25/B/9039E/SY	INDEX MS25	B	38	30	73		9039E/SY	
DH-INDE-ON12//136E	INDEX ON12; OR12		32	30	64		136E / F20	DF20F 16-15
DH-INDE-RN08//F17	INDEX RN08		28	24	64		125E / F17	
DH-MAIE-ML26/A/F32	MAIER ML26D	A	48	46	101,2		161E / F32	
DH-MAIE-ML26/B/F32	MAIER ML26D	B	49	41	93,6		161E / F32	
DH-MIYA-BX26S/A/F32	CITIZEN MIYANO BX26S	A	49	42,5	95		161E / F32	
DH-SAIC-B30//F32	SAIC B30		55	42	96		161E / F32	DF32F 26-32
DH-SCHE-PM1//F22	SCHERER Feinbau PM1		34	30	57		140E / F22	
DH-SPIN-BK//F35	SPINNER BK-NC		53	45	116,5		163E / F35	
DH-SPIN-PD42//F48	SPINNER PD42		66	55	120		173E / F48	
DH-SPIN-TC32//F35	SPINNER TC32		53	45	128,4		163E / F35	
DH-SPIN-TC32//F38	SPINNER TC32		53	45	128,4		164E / F38	
DH-STEI-STF16//F20	STEINHÄUSER STF16		35	28	78		138E / F20	
DH-STEI-STF36//F42	STEINHÄUSER STF36		62	50	110		171E / F42	
DH-STRO-M105//F15	STROHM M105 - 125		24	20	86		120E / F15	
DH-STRO-M125SJ//F15	STROHM M125SJ AS		27/24	20	86		120E / F15	
DH-STRO-M205//F25	STROHM M205		40	35	100		145E / F25	
DH-STRO-M4//F8	STROHM M4-5; TORNOS M4		15	12	66		101E / F8	

A = Hauptspindel - main spindle    B = Abgreifspindel - sub spindle

DH-TRAU-TD26//F32

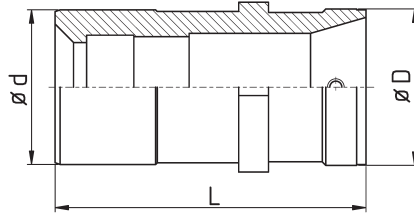


DH-TRAU-TD26//F32

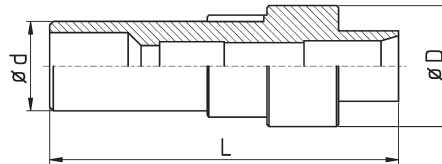
Bestell-Nr. order-no.	Maschine / Typ machine / type	A / B - Spindel	D	d	L	verl. ext. [mm]	Zange collet	Feder spring
DH-TORN-DECO2000-10//F13	TORNOS Deco2000/10		24/22	18	84,9		116E / F13	
DH-TORN-DECO2000-13/AB/F13v12	TORNOS Deco2000/13	A/B	30	30	102		116E / F13	
DH-TORN-DECO2000-13//136E	TORNOS Deco2000/13		30	30	91		136E / F20	
DH-TORN-DECO2000-20//F25	TORNOS Deco2000/20		42/40	38	105		145E / F25	
DH-TORN-DECO2000-20//F30	TORNOS Deco2000/20		44/40	38	110		1446E / F30	
DH-TORN-DECO2000-25//F37	TORNOS Deco2000/25-26		54	50	130		1536E / F37	
DH-TORN-ENC164//136E	TORNOS ENC164		30	30	69		136E / F20	
DH-TORN-M20//F25	TORNOS M20		40	33	109,7		145E / F25	
DH-TORN-MS7//F13	TORNOS MS7		24/22	18	85		116E / F13	
DH-TORN-R10//F15	TORNOS R10		26	22	90		120E / F15	
DH-TORN-SIGMA32/A/F37	TORNOS Sigma32	A	57/54	53	124		1536E / F37	
DH-TORN-SIGMA32/A/F42	TORNOS Sigma32	A	57/54	53	124		171E / F42	
DH-TORN-GAMMA/B/F13v12	TORNOS Gamma	B	38	28	105,2		116E / F13	
DH-TRAU-A15//F22	TRAUB A15		33	33	52		140E / F22	
DH-TRAU-A20//F22	TRAUB A20		42	34	67		140E / F22	
DH-TRAU-A20//F28	TRAUB A20		42	34	67		148E / F28	DF28F 23.5-8
DH-TRAU-A25//F22	TRAUB A25		52	37	96		140E / F22	DF22F 18.5-22
DH-TRAU-A25//F32	TRAUB A25		52	37	96		161E / F32	DF32F 26.5-37
DH-TRAU-A26//F32	TRAUB A26		52	40	96		161E / F32	
DH-TRAU-A42//F32	TRAUB A42; TB42		75/68	54	114		161E / F32	
DH-TRAU-A60//F48	TRAUB A60		93/86	74	114		173E / F48	DF48F 44-42
DH-TRAU-A60//F66	TRAUB A60		93/86	74	114		185E / F66	
DH-TRAU-TC15//F22	TRAUB TC15		38	28	70		140E / F22	DF22F 18.5-32
DH-TRAU-TD26//F32	TRAUB TD26		54	40	95		161E / F32	DF32F 26.5-37

A = Hauptspindel - main spindle    B = Abgreifspindel - sub spindle

DH-TRAU-TNL26/B/157E



DH-TSUG-HS207/B/F15v15



DH-TRAU-TNL16//F20

Bestell-Nr. order-no.	Maschine / Typ machine / type	A / B - Spindel	D	d	L	vert. ext. [mm]	Zange collet	Feder spring
DH-TRAU-TNL12/A/F15	TRAUB TNL12	A	25	25	75		120E / F15	
DH-TRAU-TNL12/A/F16	TRAUB TNL12	A	25	25	75		1212E / F16	
DH-TRAU-TNL12/B/F15	TRAUB TNL12	B	25	21	88		120E / F15	
DH-TRAU-TNL12//144E	TRAUB TNL12/16		35	30	88		144E / F25	
DH-TRAU-TNL127//136E	TRAUB TNL12/7		26,9	25	76		136E / F20	
DH-TRAU-TNL12K//F16	TRAUB TNL12K		30	30	75		1212E / F16	
DH-TRAU-TNL16//F20	TRAUB TNL16		35	30	88		138E / F20	
DH-TRAU-TNL26/A/157E	TRAUB TNL26	A	54	46	122,2		157E / F30	
DH-TRAU-TNL26/B/157E	TRAUB TNL26	B	46,5	50,5/46	92,8		157E / F30	
DH-TRAU-TNS42//F48	TRAUB TNS42		70	60	135		173E / F48	
DH-TRAU-TNA42//F48	TRAUB TNA42		68	60	136		173E / F48	
DH-TSUG-BN20//F25	TSUGAMI BN20		39,9	36	93,2		145E / F25	
DH-TSUG-BS32/A/F37	TSUGAMI BS32	A	47	45	129		1536E / F37	
DH-TSUG-HS207/B/F15v15	TSUGAMI HS207	B	38/32	28	111,1	15	120E / F15	
DH-TSUG-HS207/B/F25	TSUGAMI HS207	B	38/32	28	92		145E / F25	

A = Hauptspindel - *main spindle*    B = Abgreifspindel - *sub spindle*

### Druckhülsen, STAR

### Collet Sleeves, STAR

#### Identische Druckhülsen unterschiedlicher Maschinentypen Identical collet sleeves for different machine types

Spindel spindle	A	B	Standardzange standard collet	Spindel spindle	A	B	Standardzange standard collet	Spindel spindle	A	B	Standardzange standard collet
Maschine machine				Maschine machine				Maschine machine			
SW7	1		F15 / 120E	ECAS20	7	12	F25 / 145E	ECAS32	13	15	F37 / 1536E
SR10J	1			KNC20	10			JNC32	14	15	
SB12RE	19	21	F16 / 1212E	SB20	8	11	KNC32	14	15		
SB12RG	19	21		SB20RE	7	11	SR32	14	15		
SB12RN	19	21		SB20RN	9	11	SR32J (alt)	14	15		
SW12RII	19			SB20RG	9	11	SR32J (neu)	13	15		
				SR20	10	11	SR32JII	20	22		
SA12	2	4	F20 / 138E	SR20J	8	11	SR32JN	13	15		
SA16	2	4		SR20JII	9	12	SV32	13	15		
SB12	2	4		SR20JN		11	SV32J	13	15		
SB16	2	4		SR20R I / II / III	7	11	VNC32	14	15		
ECAS12	3	5		SR20R IV	9	12					
ECAS16		5		SV20	8	11	ST38		16		
SV12	3	4		SV20-R	9	12	SV38R	18	16		
SW12R				SW20	7	12	SR38	18	16		
JNC16	2			ST20	7	12					
KJR16	2	6		VNC20	10						
RNC16 (neu)	2										
SA16R	3	4									
SR16	2	6									
SR16R	7 <sup>red</sup>	11 <sup>red</sup>									
SST16	2	6									

**Hauptspindel (A)  
Gegenspindel (B)**

**main spindle (A)  
sub spindle (B)**

**Maschinen mit gleicher Nummer haben identische  
Druckhülsen.**

**Machines with identical number have identical  
collet sleeves.**

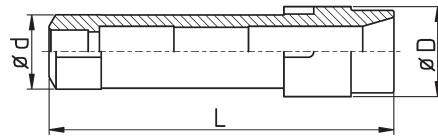
**Ist keine Nummer angegeben, gibt es keine weiteren  
kompatiblen Maschinen.**

**If there is no number written there is no further  
machine compatible.**

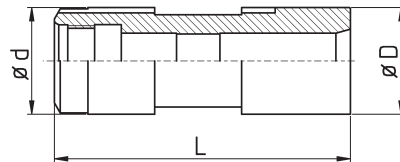
**Sind die Druckhülsen mehrerer Maschinen miteinander  
kompatibel, werden nur die Druckhülsen der grau  
unterlegten Maschinen in den Maßstabellen aufgeführt.**

**If collet sleeves of different machines are identical  
only the grey marked machine types will be found  
in the list on the next pages.**

DH-STAR-SR10J/B/F13v10



DH-STAR-SA12/B/F15

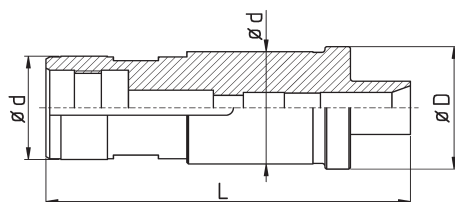


DH-STAR-SA12/B/F15

Bestell-Nr. order-no.	Maschine / Typ machine / type	A / B - Spindel	kleinster ID smallest inner diam.	D	d	L	verl. ext. [mm]	Zange collet	Feder spring
DH-STAR-SW7/B/F7v15	STAR SW7	B	5,0	27	21	109	15	1010E / F7	
DH-STAR-SW7/B/F10v17	STAR SW7	B	8,5	27	21	109	17	109E / F10	
DH-STAR-SW7/B/F15	STAR SW7	B	11,5	27	21	90		120E / F15	
DH-STAR-SR10J/A/F8	STAR SR10J	A	6,5	27	21	83		101E / F8	
DH-STAR-SR10J/A/F15	STAR SR10J	A	11,0	27	21	83		120E / F15	DF15F 11.5-28
DH-STAR-SR10J/B/F8v10	STAR SR10J	B	6,5	24	20	92,5	10	101E / F8	DF07R 5.5-24
DH-STAR-SR10J/B/F10v15	STAR SR10J	B	8,5	24	20	97,5	15	109E / F10	
DH-STAR-SR10J/B/F13	STAR SR10J	B	10,5	24	20	81		116E / F13	
DH-STAR-SR10J/B/F13v10	STAR SR10J	B	10,5	24	20	92,5	10	116E / F13	DF13R 10-36
DH-STAR-SR10J/B/F13v15	STAR SR10J	B	10,5	24	20	97,5	15	116E / F13	
DH-STAR-SR10J/B/F15	STAR SR10J	B	11,5	24	20	81		120E / F15	DF15F 11.5-28
DH-STAR-SA12/A/F20	STAR SA12	A	16,5	42	34	87		138E / F20	DF20F 16.5-30
DH-STAR-SA12/A/F22	STAR SA12	A		42	34	87		140E / F22	
DH-STAR-SA12/A/144E	STAR SA12	A		42	34	87		144E / F25	DF25F 22-33
DH-STAR-SA12/B/F10v15	STAR SA12	B	8,5	31,5	31,5	104,7	15	109E / F10	
DH-STAR-SA12/B/F15	STAR SA12	B	15,0	31,5	31,5	88,5		120E / F15	
DH-STAR-SA12/B/F20	STAR SA12	B	19,4	31,5	31,5	87,5		138E / F20	DF20F 17-25
DH-STAR-SB12RG/A/F10	STAR SB12R-G	A	8,5	30	27	90		109E / F10	
DH-STAR-SB12RG/A/F15	STAR SB12R-G	A	13,2	30	27	90		120E / F15	
DH-STAR-SB12RG/A/F16	STAR SB12R-G	A	13,5	30	27	90		1212E / F16	DF15F 11.5-33
DH-STAR-SB12RG/A/136E	STAR SB12R-G	A	16,5	30	27	90		136E / F20	
DH-STAR-SB12RG/B/F15	STAR SB12R-G	B	15,0	42	35	106		120E / F15	
DH-STAR-SB12RG/B/F16	STAR SB12R-G	B	15,8	42	35	106		1212E / F16	
DH-STAR-ECAS12/B/F20	STAR ECAS12	B	19,0	37,5	34	96		138E / F20	

A = Hauptspindel - main spindle    B = Abgreifspindel - sub spindle

DH-STAR-ECAS20/B/F10v15



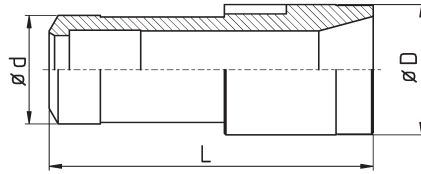
DH-STAR-ECAS20/B/F10v15

Bestell-Nr. order-no.	Maschine / Typ machine / type	A / B - Spindel	kleiner ID smaller inner diam.	D	d	L	verl. ext. [mm]	Zange collet	Feder spring
DH-STAR-SV12/A/F10v48	STAR SV12	A	10,0	38,5	34	144	48	109E / F10	
DH-STAR-SV12/A/F20	STAR SV12	A	16,8	39,5	34	93		138E / F20	
DH-STAR-SW12R/B/F10v10	SW12R II	B	8,5	29,5	27	101	10	109E / F10	
DH-STAR-SW12R/B/F10v15	SW12R II	B	8,3	29,5	27	106,5	15	109E / F10	
DH-STAR-SW12R/B/F13	SW12R II	B	13	29,5	27	90,5		116E / F13	
DH-STAR-SW12R/B/F15	SW12R II	B	15,0	29,5	27	90,5		120E / F15	
DH-STAR-SW12R/B/F16	SW12R II	B	16,0	29,5	27	90,5		1212E / F16	
DH-STAR-SW12R/B/136E	SW12R II	B	17,0	29,5	27	90,5		136E / F20	
DH-STAR-SR16/B/F20	STAR SR16	B		35	31	122		138E / F20	
DH-STAR-SR16R/B/F20	STAR SR16R	B	19,0	42	35	101		138E / F20	
DH-STAR-RNC16/B/F20	STAR RNC16	B	14,0	31	26	90		138E / F20	
DH-STAR-RNC16alt/B/F15v15	STAR RNC16 alt	B	14,0	25	24	105		120E / F15	
DH-STAR-ECAS20/B/F8v15	STAR ECAS20	B	6,5	41,5	38/35	122	15	101E / F8	
DH-STAR-ECAS20/B/F10v15	STAR ECAS20	B	8,5	41,5	38/35	121,5	15	109E / F10	DF10R 7-24
DH-STAR-ECAS20/B/F13v15	STAR ECAS20	B	10,5	41,5	38/35	120,8	15	116E / F13	
DH-STAR-ECAS20/B/F15v15	STAR ECAS20	B	12,0	41,5	38/35	120,8	15	120E / F15	DF15F 11.5-33
DH-STAR-ECAS20/B/F16v15	STAR ECAS20	B	13,0	41,5	38/35	120,8	15	1212E / F16	DF16F 12.5-34
DH-STAR-ECAS20/B/136E	STAR ECAS20	B	20,5	41,5	38/35	104,5		136E / F20	
DH-STAR-ECAS20/B/F25	STAR ECAS20	B	24,0	41,5	38/35	101,5		145E / F25	DF25F 22-25
DH-STAR-ECAS20/B/F27	STAR ECAS20	B	24,0	41,5	38/35	101,6		147E / F27	DF27F 23-28
DH-STAR-ECAS20/B/F27L #	STAR ECAS20	B	24,0	41,5	38/35	104,5		147E / F27	DF27F 23-35
DH-STAR-ECAS20HS/B/F20	STAR ECAS20	B	17	41,5	35	106,7		138E / F20	
DH-STAR-SR20/A/F10v15	STAR SR20	A		42	35	122	15	109E / F10	
DH-STAR-SR20/A/F25	STAR SR20	A	24,0	42	35	104,5		145E / F25	DF25F 22-44
DH-STAR-SR20JN/A/F25	STAR SR20JN	A	21,0	42	35	101		145E / F25	
DH-STAR-SR20JN/A/F27	STAR SR20JN	A	23,5	42	35	103		147E / F27	DF27F 23-32

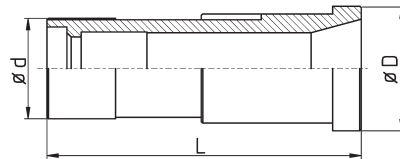
A = Hauptspindel - main spindle    B = Abgreifspindel - sub spindle  
 # verlängert auf normale Länge - extended to normal length



DH-STAR-SR20/A/F27



DH-STAR-SR20R/A/F25

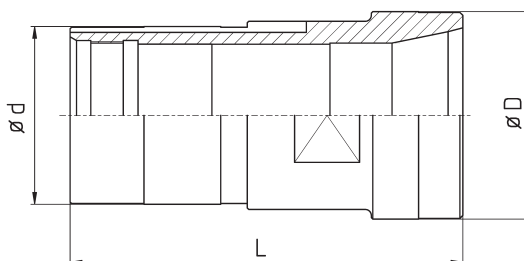


DH-STAR-SR20R/A/F25

Bestell-Nr. order-no.	Maschine / Typ machine / type	A / B - Spindel	kleiner ID smalles inner diam.	D	d	L	verl. ext. [mm]	Zange collet	Feder spring
DH-STAR-SR20R/A/F15	STAR SR20R I / II / III	A	13,0	43,4	38/34	114		120E / F15	
DH-STAR-SR20R/A/F20	STAR SR20R I / II / III	A	17,5	43,4	38/34	110		138E / F20	
DH-STAR-SR20R/A/F25	STAR SR20R I / II / III	A	22,0	43,4	38/34	110		145E / F25	DF25F 22-44
DH-STAR-SR20R/A/F27	STAR SR20R I / II / III	A	24,0	43,4	38/34	110		147E / F27	DF27F 23-35
DH-STAR-SR20R/B/F8v15	STAR SR20R I / II / III	B	6,5	42	35	121,5	15	101E / F8	DF07R 5.5-24
DH-STAR-SR20R/B/F10v15	STAR SR20R I / II / III	B	8,5	42	35	121,5	15	109E / F10	DF10R 7-24
DH-STAR-SR20R/B/F15v10	STAR SR20R I / II / III	B	12,0	42	35	104	10	120E / F15	
DH-STAR-SR20R/B/F15v15	STAR SR20R I / II / III	B	12,0	42	35	120,3	15	120E / F15	
DH-STAR-SR20R/B/F16v10	STAR SR20R I / II / III	B	13,0	42	35	115,3	10	1212E / F16	
DH-STAR-SR20R/B/F16v15	STAR SR20R I / II / III	B	13,0	42	35	120,3	15	1212E / F16	
DH-STAR-SR20R/B/F20	STAR SR20R I / II / III	B	20,0	42	35	104		138E / F20	
DH-STAR-SR20R/B/136E	STAR SR20R I / II / III	B	17,0	42	35	106		136E / F20	
DH-STAR-SR20R/B/F25	STAR SR20R I / II / III	B	23,0	42	35	101		145E / F25	DF25F 22-25
DH-STAR-SR20R/B/F27	STAR SR20R I / II / III	B	24,0	42	35	101		147E / F27	DF27F 23-28
DH-STAR-SR20R/B/F27L #	STAR SR20R I / II / III	B	24,0	42	35	103		147E / F27	
DH-STAR-SR20R4/A/F15v15	STAR SR20R IV	A	12,0	43,5	38/35	126,3	15	120E / F15	DF15F 11.5-28
DH-STAR-SR20R4/A/F25	STAR SR20R IV	A	20,5	43,5	38/35	107		145E / F25	DF25F 22-44
DH-STAR-SR20R4/A/F27	STAR SR20R IV	A	24,0	43,5	38/35	109		147E / F27	DF27F 23-35
DH-STAR-SV20/A/F20	STAR SV20	A	17,5	42	35	104		138E / F20	
DH-STAR-SV20/A/F25	STAR SV20	A	22,0	42	35	104		145E / F25	
DH-STAR-SV20/A/F27	STAR SV20	A	24,5	42	35	104		147E / F27	DF27F 23-35
DH-STAR-SR32/A/F37	STAR SR32	A	33,0	56	48	136		1536E / F37	DF37F 33-80
DH-STAR-SR32JII/A/F37	STAR SR32JII	A	32,8	55	51	140		1536E / F37	
DH-STAR-SR32JII/A/F40	STAR SR32JII	A	36,5	55	51	140		F40	
DH-STAR-SR32JII/B/F37	STAR SR32JII	B	36,5	55	51	125		1536E / F37	
DH-STAR-SR32JII/B/F40	STAR SR32JII	B	36,5	55	51	125		F40	

A = Hauptspindel - main spindle    B = Abgreifspindel - sub spindle  
 # verlängert auf normale Länge - extended to normal length

DH-STAR-ST38/B/F48



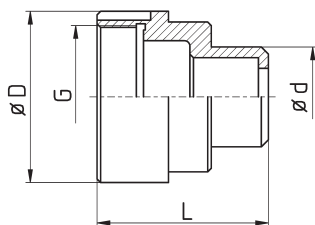
Bestell-Nr. order-no.	Maschine / Typ machine / type	A / B - Spindel	kleiner ID smalles inner diam.	D	d	L	verl. ext. [mm]	Zange collet	Feder spring
DH-STAR-SV32/A/F25	STAR SV32	A		56	48	140		145E / F25	
DH-STAR-SV32/A/F30	STAR SV32	A	26,6	56	48	140		1446E / F30	
DH-STAR-SV32/A/F37	STAR SV32	A	33,0	56	48	135		1536E / F37	
DH-STAR-SV32/A/F40	STAR SV32	A	36,5	56	48	140		F40	DF40F 36-60
DH-STAR-SV32/B/F20v20	STAR SV32	B	17,0	55	51	148	20	138E / F20	
DH-STAR-SV32/B/F25	STAR SV32	B	22,0	55	51	125		145E / F25	DF25F 22-25
DH-STAR-SV32/B/F30	STAR SV32	B	26,6	55	51	129		1446E / F30	
DH-STAR-SV32/B/F37	STAR SV32	B	37,0	55	51	125		1536E / F37	DF37F 34-44
DH-STAR-SV32/B/F40	STAR SV32	B	37,0	55	51	125		F40	DF40F 36.5-37
DH-STAR-ST38/A/F37	STAR ST38	A	33,0	70	63,5/60	131,5		1536E / F37	
DH-STAR-ST38/A/F42	STAR ST38	A	36,0	70	63,5/60	133		171E / F42	
DH-STAR-ST38/A/F48	STAR ST38	A	43,0	70	63,5/60	133		173E / F48	
DH-STAR-ST38/B/F37	STAR ST38	B	37,0	70	63,5/60	131,5		1536E / F37	
DH-STAR-ST38/B/F25v20	STAR ST38	B	21,0	70	63,5/60	153	20	145E / F25	DF25F 22-44
DH-STAR-ST38/B/F42	STAR ST38	B	42,0	70	63,5/60	133		171E / F42	
DH-STAR-ST38/B/F48	STAR ST38	B	48,0	70	63,5/60	133		173E / F48	
DH-STAR-SV38R/A/F37	STAR SV38 R	A	33,0	61	61,5	131,5		1536E / F37	
DH-STAR-SV38R/A/F48	STAR SV38 R	A	43,0	69,5	61,5	133		173E / F48	

A = Hauptspindel - main spindle    B = Abgreifspindel - sub spindle  
 # verlängert auf normale Länge - extended to normal length

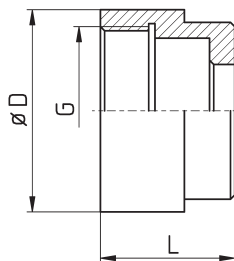
# Überwurfmuttern für Druckhülsen

*Cap Nuts for  
Collet Sleeves*





MU-CIT-K12/B/F15v15

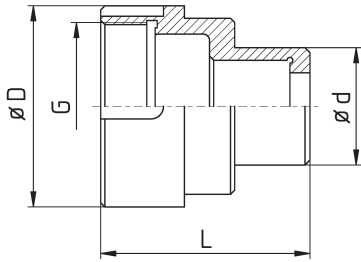


MU-CIT-M216/B/F20

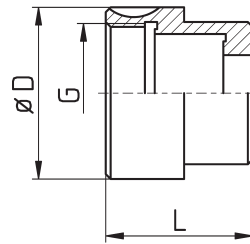


Bestell-Nr. order-no.	Maschine / Typ machine / type	A / B - Spindel	D	G	L	d	verl. ext. [mm]	Zange collet
MU-CIT-A20/AB/F25	CITIZEN CINCOM A20	A+B	65	M55x1,5	40			145E / F25
MU-CIT-A32CL/A/F37	CITIZEN CINCOM A32VII CL	A	100	-	28			1536E / F37
MU-CIT-A32CL/A/F40	CITIZEN CINCOM A32VII CL	A	100	-	28			F40
MU-CIT-B12/A/F15	CITIZEN CINCOM B12	A	42	M32x1	32			120E / F15
MU-CIT-B12/A/F16	CITIZEN CINCOM B12	A	42	M32x1	21			1212E / F16
MU-CIT-B12/B/F10v10	CITIZEN CINCOM B12	B	42	M32x1	35	24	10	109E / F10
MU-CIT-B12/B/F13	CITIZEN CINCOM B12	B	42	M32x1				116E / F13
MU-CIT-B12/B/F15	CITIZEN CINCOM B12	B	42	M32x1	25			120E / F15
MU-CIT-B12/B/F16	CITIZEN CINCOM B12	B	42	M32x1	25			1212E / F16
MU-CIT-K12/A/F15	CITIZEN CINCOM K12	A	48	M40x1,5	65			120E / F15
MU-CIT-K12/A/F16	CITIZEN CINCOM K12	A	48	M40x1,5	65			1212E / F16
MU-CIT-K12/B/F8v10	CITIZEN CINCOM K12	B	48	M40x1,5	42	17	10	101E / F8
MU-CIT-K12/B/F10v15	CITIZEN CINCOM K12	B	48	M40x1,5	47	24	15	109E / F10
MU-CIT-K12/B/F13	CITIZEN CINCOM K12	B	48	M40x1,5	32			116E / F13
MU-CIT-K12/B/F15	CITIZEN CINCOM K12	B	48	M40x1,5	32			120E / F15
MU-CIT-K12/B/F15v15	CITIZEN CINCOM K12	B	48	M40x1,5	47	28	15	120E / F15
MU-CIT-K12/B/F15v18	CITIZEN CINCOM K12	B	48	M40x1,5	50	28	18	120E / F15
MU-CIT-K12/B/F16	CITIZEN CINCOM K12	B	48	M40x1,5	32			1212E / F16
MU-CIT-K16/B/F20	CITIZEN CINCOM K16	B	48	M40x1,5	32			138E / F20
MU-CIT-L16/B/F15v15	CITIZEN CINCOM L16VII; M20	B	60	M50x1,5	55			120E / F15
MU-CIT-L16/B/F20	CITIZEN CINCOM L16VII; M20	B	60	M50x1,5	38			138E / F20
MU-CIT-L2012//F25	CITIZEN CINCOM L20-12		63	M55x1,5	54			145E / F25
MU-CIT-L220X/B/F25	CITIZEN CINCOM L <sub>2</sub> 20X	B	63	M55x1,5	54			145E / F25
MU-CIT-L520/A/F25	CITIZEN CINCOM L520VIII	A	60	M50x1,5	58			145E / F25
MU-CIT_L520/A/F27	CITIZEN CINCOM L520VIII	A	60	M50x1,5	58			147E / F27
MU-CIT-L520/B/F25	CITIZEN CINCOM L520VIII	B	60	M50x1,5	47			145E / F25
MU-CIT-M12/B/F15	CITIZEN CINCOM M12	B	45	M35x1,5	32			120E / F15
MU-CIT-M12/B/F16	CITIZEN CINCOM M12	B	45	M35x1,5				1212E / F16
MU-CIT-M216/B/F10v15	CITIZEN CINCOM M <sub>2</sub> 16	B	48	M40x1,5	47		15	109E / F10
MU-CIT-M216/B/F13v15	CITIZEN CINCOM M <sub>2</sub> 16	B	48	M40x1,5	47	28	15	116E / F13
MU-CIT-M216/B/F15	CITIZEN CINCOM M <sub>2</sub> 16	B	48	M40x1,5				120E / F15

A = Hauptspindel - main spindle    B = Abgreifspindel - sub spindle



MU-CIT-M216/B/F16v18

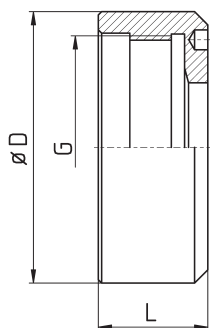


MU-CIT-R07/B/F10

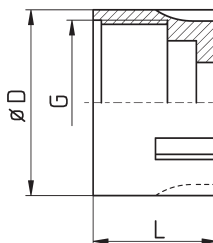


Bestell-Nr. order-no.	Maschine / Typ machine / type	A / B - Spindel	D	G	L	d	verl. ext. [mm]	Zange collet
MU-CIT-M216/B/F15v15	CITIZEN CINCOM M <sub>2</sub> 16	B	48	M40x1,5	48	28	15	120E / F15
MU-CIT-M216/B/F15v18	CITIZEN CINCOM M <sub>2</sub> 16	B	48	M40x1,5	50	28	18	120E / F15
MU-CIT-M216/B/F16v15	CITIZEN CINCOM M <sub>2</sub> 16	B	48	M40x1,5	47	28	15	1212E / F16
MU-CIT-M216/B/F16v18	CITIZEN CINCOM M <sub>2</sub> 16	B	48	M40x1,5	50	28	18	1212E / F16
MU-CIT-M216/B/F16	CITIZEN CINCOM M <sub>2</sub> 16	B	48	M40x1,5	32			1212E / F16
MU-CIT-M216/B/F20	CITIZEN CINCOM M <sub>2</sub> 16	B	48	M40x1,5	32			138E / F20
MU-CIT-M32/A/F37	CITIZEN CINCOM M32	A	75	M65x1,5	74			1536E / F37
MU-CIT-M32/B/F20	CITIZEN CINCOM M32	B	76	M65x1,5	53			138E / F20
MU-CIT-M32/B/F37	CITIZEN CINCOM M32	B	76	M65x1,5	53			1536E / F37
MU-CIT-M432/A/F20	CITIZEN CINCOM M <sub>4</sub> 32	A	80	M70x1,5	74			138E / F20
MU-CIT-M432/A/F25	CITIZEN CINCOM M <sub>4</sub> 32	A	80	M70x1,5	74			145E / F25
MU-CIT-M432/A/F37	CITIZEN CINCOM M <sub>4</sub> 32	A	80	M70x1,5	74			1536E / F37
MU-CIT-M432/A/F40	CITIZEN CINCOM M <sub>4</sub> 32	A	80	M70x1,5	74			F40
MU-CIT-M432/B/F20	CITIZEN CINCOM M <sub>4</sub> 32	B	76	M65x1,5	58			138E / F20
MU-CIT-M432/B/F25	CITIZEN CINCOM M <sub>4</sub> 32	B	76	M65x1,5	58			145E / F25
MU-CIT-M432/B/F37	CITIZEN CINCOM M <sub>4</sub> 32	B	76	M65x1,5	58			1536E / F37
MU-CIT-M432/B/F40	CITIZEN CINCOM M <sub>4</sub> 32	B	76	M65x1,5	58			F40
MU-CIT-ML12/A/F13	CITIZEN CINCOM ML12	A	47	M40x1,5	43,5			116E / F13
MU-CIT-ML12/A/F15	CITIZEN CINCOM ML12	A	47	M40x1,5	43,5			120E / F15
MU-CIT-ML12/A/F16	CITIZEN CINCOM ML12	A	47	M40x1,5	43,5			1212E / F16
MU-CIT-R07/B/F10	CITIZEN CINCOM R07	B	35	M28x1	30			109E / F10
MU-CIT-R207/B/F13	CITIZEN CINCOM R <sub>2</sub> 07	B	35	M28x1	30			116E / F13
MU-FEIN-FA10//F15	FEINLER FA10		38	M32x1,5	23			120E / F15
MU-INDE-18//F28	INDEX 18		68	M58x2L	31,5			148E / F28

A = Hauptspindel - main spindle    B = Abgreifspindel - sub spindle



MU-SPIN-TC32//F38

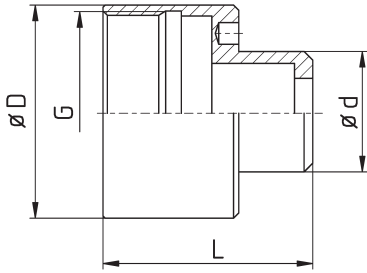


MU-TORN-DECO2000-13//136E

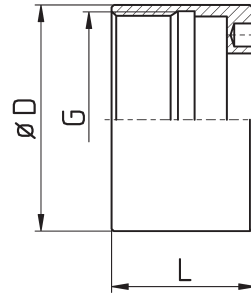


Bestell-Nr. order-no.	Maschine / Typ machine / type	A / B - Spindel	D	G	L	d	verl. ext. [mm]	Zange collet
MU-INDE-25//F28	INDEX 25		72	M63x2L	31,5			148E / F28
MU-INDE-52//F66	INDEX 52		117	M108x2L	41,5			185E / F66
MU-INDE-B30//F35	INDEX B30		88	M74x2L	38,5			163E / F35
MU-INDE-B42//F48	INDEX B42; 36		97	M85x2L	38,5			173E / F48
MU-INDE-B60//F66	INDEX B60		122	M108x2L	34			185E / F66
MU-INDE-C19//F28	INDEX C19		73	M63x2L	34			148E / F28
MU-INDE-C29//F28	INDEX C29		84,5	M74x2L	35			148E / F28
MU-INDE-C29//F35	INDEX C29		84,5	M74x2L	35			163E / F35
MU-INDE-DG12//F22	INDEX DG12		62	M52x2L	23			140E / F22
MU-INDE-ON12//136E	INDEX ON12; OR12		45	M40x1,5L	41			136E / F20
MU-SPIN-PD42//F48	SPINNER PD42		90	M80x2	35			173E / F48
MU-SPIN-TC32//F35	SPINNER TC32		82	M68x3	33			163E / F35
MU-SPIN-TC32//F38	SPINNER TC32		82	M68x3	33			164E / F38
MU-STRO-M105//F15	STROHM M105 - 125		34	M30x1,5	20			120E / F15
MU-STRO-M125AS/F15	STROHM M125AS		35,5	M32x1,5	35			120E / F15
MU-STRO-M205//F25	STROHM M205; M255		63	M56x1,5	40			145E / F25

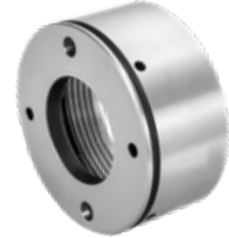
A = Hauptspindel - main spindle    B = Abgreifspindel - sub spindle



MU-TSUG-HS207/B/F15v15



MU-TSUG-HS207/B/F25



Bestell-Nr. order-no.	Maschine / Typ machine / type	A / B - Spindel	D	G	L	d	verl. ext. [mm]	Zange collet
MU-TORN-AS14/B/F16	TORNOS AS14 / SAS16	B	38	M32x1L	15			1212E / F16
MU-TORN-DECO2000-13//136E	TORNOS DECO2000/13	AB	45	M40x1,5	30			136E / F20
MU-TORN-DECO2000-13/AB/F13v12	TORNOS DECO2000/13	AB	45	M40x1,5	42	30	12	116E / F13
MU-TORN-EVODECO16//F13v12	TORNOS EVODECO16		45	M40x1,5	48	30	12	116E / F13
MU-TORN-GAMMA//F13v12	TORNOS GAMMA		49	M46x1,5	44	27,3	12	116E / F13
MU-TORN-R10//F15	TORNOS R10		37,5	M33x1,25L	17			120E / F15
MU-TRAU-A20//F22	TRAUB A20		63	M52x3	39			140E / F22
MU-TRAU-A20//F28	TRAUB A20		63	M52x3	39			148E / F28
MU-TRAU-A25//F22	TRAUB A25		72	M62x2,5	39			140E / F22
MU-TRAU-A25//F32	TRAUB A25		72	M62x2,5	39			161E / F32
MU-TRAU-A42//F32	TRAUB A42; TB42		91	M80x3	46			161E / F32
MU-TRAU-A42//F48	TRAUB A42; TB42		91	M80x3	46			173E / F48
MU-TRAU-TD26//F32	TRAUB TD26 ab 1976		78	M70x3	40			161E / F32
MU-TRAU-TD26alt//F32	TRAUB TD26 bis 1976		78	M70x3	40			161E / F32
MU-TRAU-TD36alt//F42	TRAUB TD36 bis 1976		86	M80x3	40			171E / F42
MU-TRAU-TNL16/F20	TRAUB TNL16		50		30			138E/F20
MU-TSUG-BS32/A/F37	TSUGAMI BS32	A	81,8	M70x1,5	50			1536E / F37
MU-TSUG-HS207/B/F15v15	TSUGAMI HS207	B	49	M46x1,5	48	27,3	15	120E / F15
MU-TSUG-HS207/B/F25	TSUGAMI HS207	B	49	M46x1,5	31			145E / F25
MU-BOL-BC42/A/140E	BOLEY BC42	A	48	M40x1,5	65			140E / F22

A = Hauptspindel - main spindle    B = Abgreifspindel - sub spindle

Überwurfmuttern für Druckhülsen, STAR

Cap Nuts for Collet Sleeves, STAR

**Identische Überwurfmuttern unterschiedlicher Maschinentypen**  
*Identical cap nuts for collet sleeves for different machine types*

Spindel spindle	A	B	Standardzange standard collet	Spindel spindle	A	B	Standardzange standard collet	Spindel spindle	A	B	Standardzange standard collet
Maschine machine				Maschine machine				Maschine machine			
SW7 SR10J	1		F15 / 120E	SR16R ECAS20 KNC20 SB20	10 10 13 11	14 15 16 14		ECAS32 JNC32 KNC32 SR32	17 18 18 17	19	
SB12RG SB12RN SB12RE SW12RII	24 24 24 24	26 26 26 25	F16/ 1212E	SB20RE SB20RN SB20RG SR20 SR20J	10 12 12 13 11	14 14 14 16 14	F25 / 145E	SR32J (neu) SR32JII SR32JN SV32 SV32J VNC32	17 27 19 17 17 18	19 28 19 19 19	F37 / 1536E
SA12 SA16 SB12 SB16 ECAS12 ECAS16 SV12 SW12R KJR16 RNC16 (neu) RNC16 (alt) SA16R SR16 SST16	2 2 2 2 7 7 4 5 3 3 4 5 5	6 6 6 6 7 7 6 8 8 8 6 8 8	F20 / 138E	SR20JII SR20JN SR20R I / II / III SR20R IV SV20 SV20R SW20 ST20 VNC20	10 29 10 29 11 29 10 10 13	14 15 14 15 14 15 15 15		ST38 SV38R SR38	23 22 22	23 23 23	F48 / 173E

**Hauptspindel (A)**  
**Gegenspindel (B)**

*main spindle (A)*  
*sub spindle (B)*

**Maschinen mit gleicher Nummer haben identische Überwurfmuttern.**

*Machines with identical number have identical nuts.*

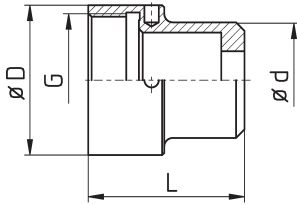
**Ist keine Nummer angegeben, gibt es keine weiteren kompatiblen Maschinen.**

*If a number is not specified there is no other compatible machine.*

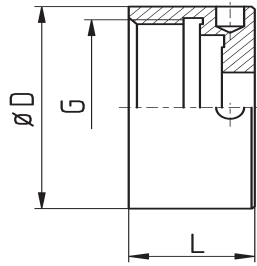
**Sind die Muttern mehrerer Maschinen miteinander kompatibel, werden nur die Muttern der grau unterlegten Maschinen in den Maßtabellen aufgeführt.**

*If nuts of different machines are identical only the grey marked machine types will be found in the list.*





MU-STAR-SW7/B/F13v15



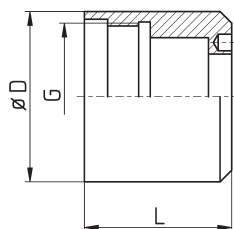
MU-STAR-SA12/B/F15



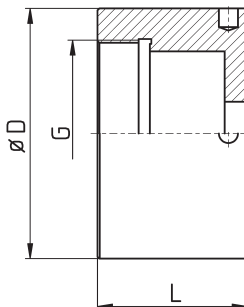
MU-STAR-SA12/B/F15

Bestell-Nr. order-no.	Maschine / Typ machine / type	A / B - Spindel	D	G	L	d	vert. ext. [mm]	Zange collet
MU-STAR-SW7/B/F7v15	STAR SW7	B	42	M36x1,5	42,5	18	15	1020E / F7
MU-STAR-SW7/B/F10v17	STAR SW7	B	42	M36x1,5	44,5	24	17	109E / F10
MU-STAR-SW7/B/F15	STAR SW7	B	42	M36x1,5	27,5			120E / F15
MU-STAR-SR10J/A/F8	STAR SR10J	A	42	M36x1,5	23			109E / F8
MU-STAR-SR10J/A/F15	STAR SR10J	A	42	M36x1,5	23			120E / F15
MU-STAR-SR10J/B/F8	STAR SR10J	B	35	M31x1,5	18			101E / F8
MU-STAR-SR10J/B/F8v10	STAR SR10J	B	35	M31x1,5	28	17	10	101E / F8
MU-STAR-SR10J/B/F10v15	STAR SR10J	B	35	M31x1,5	33	24	15	109E / F10
MU-STAR-SR10J/B/F13	STAR SR10J	B	35	M31x1,5	18			116E / F13
MU-STAR-SR10J/B/F13v10	STAR SR10J	B	35	M31x1,5	29	28	10	116E / F13
MU-STAR-SR10J/B/F13v15	STAR SR10J	B	35	M31x1,5	34	28	15	116E / F13
MU-STAR-SR10J/B/F15	STAR SR10J	B	35	M31x1,5	18			120E / F15
MU-STAR-SA12/A/F15	STAR SA12	A	55	M44x1,5	42			120E / F15
MU-STAR-SA12/A/F20	STAR SA12	A	55	M44x1,5	42			138E / F20
MU-STAR-SA12/B/F10v10	STAR SA12	B	46	M40x1,5	33	24	10	109E / F10
MU-STAR-SA12/B/F10v15	STAR SA12	B	46	M40x1,5	38	24	15	109E / F10
MU-STAR-SA12/B/F15	STAR SA12	B	46	M40x1,5	23			120E / F15
MU-STAR-SA12/B/F20	STAR SA12	B	46	M40x1,5	23			138E / F20
MU-STAR-SB12RG/A/136E	STAR SB12R-G	A	44	M38x1,5	35			136E / F20
MU-STAR-SB12RG/A/F10	STAR SB12R-G	A	44	M38x1,5	35			109E / F10
MU-STAR-SB12RG/A/F15	STAR SB12R-G	A	44	M38x1,5	35			120E / F15
MU-STAR-SB12RG/A/F16	STAR SB12R-G	A	44	M38x1,5	35			1212E / F16
MU-STAR-SB12RG/B/F16	STAR SB12R-G	B	59	M50x1	41			1212E / F16
MU-STAR-ECAS12/B/F20	STAR ECAS12	B	55	M45x1,5	38			138E / F20

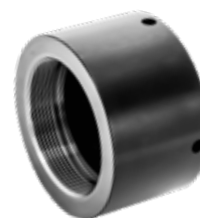
A = Hauptspindel - main spindle    B = Abgreifspindel - sub spindle



MU-STAR-RNC16/B/F20v15



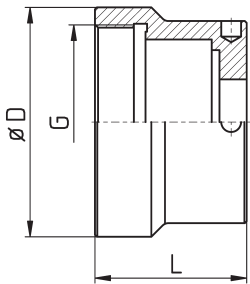
MU-STAR-SR20R/A/F16



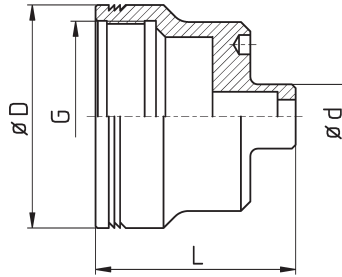
MU-STAR-SR20R/A/F25

Bestell-Nr. order-no.	Maschine / Typ machine / type	A / B - Spindel	D	G	L	d	verl. ext. [mm]	Zange collet
MU-STAR-SV12/A/F10v48	STAR SV12	A	55	M45x1,5	86	23,8	48	109E / F10
MU-STAR-SV12/A/F20	STAR SV12	A	55	M45x1,5	38			138E / F20
MU-STAR-SW12R/B/F10v10	STAR SW12R II	B	46	M40x1,5	46	25	10	109E / F10
MU-STAR-SW12R/B/F10v15	STAR SW12R II	B	46	M40x1,5	51	24	15	109E / F10
MU-STAR-SW12R/B/F13	STAR SW12R II	B	46	M40x1,5	36			116E / F13
MU-STAR-SW12R/B/F15	STAR SW12R II	B	46	M40x1,5	36			120E / F15
MU-STAR-SW12R/B/F16	STAR SW12R II	B	46	M40x1,5	36			1212E / F16
MU-STAR-SW12R/B/136E	STAR SW12R II	B	46	M40x1,5	36			136E / F20
MU-STAR-SB16/A/F20	STAR SB16	A	49,5	M44x1,5	40			138E / F20
MU-STAR-RNC16/A/F20	STAR RNC16	A	49,5	M44x1,5	40			138E / F20
MU-STAR-RNC16alt/B/F15	STAR RNC16 alt	B	39,5	M33x1,5	25			120E / F15
MU-STAR-SST16/B/F20	STAR SST16	B	50	M44x1,5	30			138E / F20
MU-STAR-SB20RN/A/F25	STAR SB20RN	A	65	M50x1,5	37			145E / F25
MU-STAR-SB20RN/A/F27	STAR SB20RN	A	65	M50x1,5	37			147E / F27
MU-STAR-SB20RN/B/F25	STAR SB20RN	B	59	M50x1	41			145E / F25
MU-STAR-SB20RN/B/F27	STAR SB20RN	B	59	M50x1	39			147E / F27
MU-STAR-SB20RN/B/F27L	STAR SB20RN	B	59	M50x1	41			147E / F27
MU-STAR-ECAS20/B/F8v15	STAR ECAS20	B	59	M50x1,5	54	17	15	101E / F8
MU-STAR-ECAS20/B/F10v15	STAR ECAS20	B	59	M50x1,5	54	24	15	109E / F10
MU-STAR-ECAS20/B/F13v15	STAR ECAS20	B	59	M50x1,5	54	28	15	116E / F13
MU-STAR-ECAS20/B/F15v15	STAR ECAS20	B	59	M50x1,5	54	28	15	120E / F15
MU-STAR-ECAS20/B/F16v15	STAR ECAS20	B	59	M50x1,5	54	28	15	1212E / F16
MU-STAR-ECAS20/B/136E	STAR ECAS20	B	59	M50x1,5	39			136E / F20
MU-STAR-ECAS20/B/F25	STAR ECAS20	B	59	M50x1,5	39			145E / F25
MU-STAR-ECAS20/B/F27	STAR ECAS20	B	59	M50x1,5	36			147E / F27
MU-STAR-ECAS20/B/F27L	STAR ECAS20	B	59	M50x1,5	39			147E / F27

A = Hauptspindel - main spindle    B = Abgreifspindel - sub spindle



MU-STAR-ECAS20/B/F20



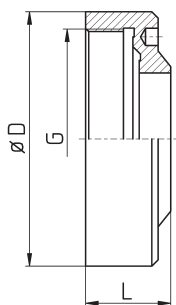
MU-STAR-SR20/B/F8v12



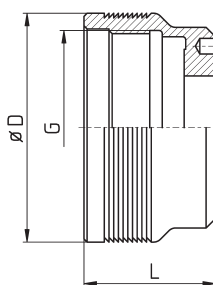
MU-STAR-SR20/B/F10v15

Bestell-Nr. order-no.	Maschine / Typ machine / type	A / B - Spindel	D	G	L	d	verl. ext. [mm]	Zange collet
MU-STAR-SR20/A/F27	STAR SR20	A	64	M56x1,5				147E / F27
MU-STAR-SR20/B/F10v15	STAR SR20	B	59	M50x1	56	24	15	109E / F10
MU-STAR-SR20/B/F25	STAR SR20	B	59	M50x1	41			145E / F25
MU-STAR-SR20/B/F27	STAR SR20	B	59	M50x1	41			147E / F27
MU-STAR-SR20JN/A/F25	STAR SR20JN	A	67	M56x1,5	28			145E / F25
MU-STAR-SR20JN/A/F27	STAR SR20JN	A	67	M56x1,5	28			147E / F27
MU-STAR-SR20JII/A/F25	STAR SR20JII	A	65	M50x1,5	37			145E / F25
MU-STAR-SR20JII/A/F27	STAR SR20JII	A	65	M50x1,5	37			147E / F27
MU-STAR-SR20R/A/F16	STAR SR20R I / II / III	A	67	M50x1,5	40			1212E / F16
MU-STAR-SR20R/A/F20	STAR SR20R I / II / III	A	67	M50x1,5	40			138E / F20
MU-STAR-SR20R/A/F25	STAR SR20R I / II / III	A	67	M50x1,5	40			145E / F25
MU-STAR-SR20R/A/F27	STAR SR20R I / II / III	A	67	M50x1,5	40			147E / F27
MU-STAR-SR20R/B/F8v15	STAR SR20R I / II / III	B	59	M50x1	53	17	15	101E / F8
MU-STAR-SR20R/B/F10v15	STAR SR20R I / II / III	B	59	M50x1	56	24	15	109E / F10
MU-STAR-SR20R/B/F13v15	STAR SR20R I / II / III	B	59	M50x1	56	28	15	116E / F13
MU-STAR-SR20R/B/F15v8	STAR SR20R I / II / III	B	59	M50x1	49	28	8	120E / F15
MU-STAR-SR20R/B/F15v15	STAR SR20R I / II / III	B	59	M50x1	56	28	15	120E / F15
MU-STAR-SR20R/B/136E	STAR SR20R I / II / III	B	59	M50x1	41			136E / F20
MU-STAR-SR20R/B/F20	STAR SR20R I / II / III	B	59	M50x1				138E / F20
MU-STAR-SR20R/B/F25	STAR SR20R I / II / III	B	59	M50x1	41			145E / F25
MU-STAR-SR20R/B/F27	STAR SR20R I / II / III	B	59	M50x1	39			147E / F27
MU-STAR-SR20R/B/F27L	STAR SR20R I / II / III	B	59	M50x1	41			147E / F27
MU-STAR-SR20R4/A/F25	STAR SR20RIV	A	65	M50x1,5	37			145E / F25
MU-STAR-SR20R4/A/F27	STAR SR20RIV	A	65	M50x1,5	37			147E / F27
MU-STAR-SR20R4/A/F15v15	STAR SR20RIV	A	65	M50x1,5	52	28	15	120E / F15

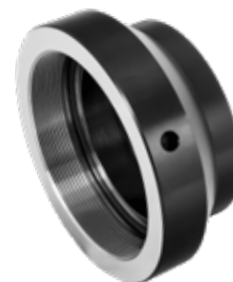
A = Hauptspindel - main spindle    B = Abgreifspindel - sub spindle



MU-STAR-SR32JN/A/F37



MU-STAR-KNC32/B/F30



MU-STAR-SR38/A/F37

Bestell-Nr. order-no.	Maschine / Typ machine / type	A / B - Spindel	D	G	L	d	verl. ext. [mm]	Zange collet
MU-STAR-SV20/A/F25	STAR SV20	A	67	M56x1,5	28			145E / F25
MU-STAR-SV20/A/F27	STAR SV20	A	67	M56x1,5	28			147E / F27
MU-STAR-ECAS32/B/F20v23	STAR ECAS32	B	85	M62x1	63	38	23	138E / F20
MU-STAR-ECAS32/B/F37	STAR ECAS32	B	85	M62x1	43			1536E / F37
MU-STAR-KNC32/A/F37	STAR KNC32	A	88	M76x1,5	42			1536E / F37
MU-STAR-KNC32/B/F25	STAR KNC32	B	73	M62x1	42			145E / F25
MU-STAR-KNC32/B/F37	STAR KNC32	B	73	M62x1	42			1536E / F37
MU-STAR-SR32JN/A/F37	STAR SR32JN	A	81	M70x1,5	27			1536E / F37
MU-STAR-SR32JN/A/F40	STAR SR32JN	A	81	M70x1,5	27			F40
MU-STAR-SR32JII/A/F37	STAR SR32JII	A	81	M68x1,5	52			1536E / F37
MU-STAR-SR32JII/A/F40	STAR SR32JII	A	81	M68x1,5	52			F40
MU-STAR-SR32JII/B/F37	STAR SR32JII	B	73	M62x1	42			1536E / F37
MU-STAR-SR32JII/B/F40	STAR SR32JII	B	73	M62x1	42			F40
MU-STAR-SV32/A/F25	STAR SV32	A	90	M76x1,5	35			145E / F25
MU-STAR-SV32/A/F37	STAR SV32	A	90	M76x1,5	35			1536E / F37
MU-STAR-SV32/A/F40	STAR SV32	A	90	M76x1,5	35			F40
MU-STAR-SV32/B/F20v20	STAR SV32	B	73	M62x1	63	38	20	138E / F20
MU-STAR-SV32/B/F25	STAR SV32	B	73	M62x1				145E / F25
MU-STAR-SV32/B/F30	STAR SV32	B	73	M62x1				1446E / F30
MU-STAR-SV32/B/F37	STAR SV32	B	73	M62x1	43			1536E / F37
MU-STAR-SV32/B/F40	STAR SV32	B	73	M62x1	43			F40
MU-STAR-ST38/A/F37	STAR ST38	A	105	M85x1,5	46,5			1536E / F37
MU-STAR-ST38/A/F42	STAR ST38	A	105	M85x1,5	46,5			171E / F42
MU-STAR-ST38/A/F48	STAR ST38	A	105	M85x1,5	46,5			173E / F48
MU-STAR-ST38/B/F25v20	STAR ST38	B	105	M85x1,5	47,5		20	145E / F25
MU-STAR-ST38/B/F37	STAR ST38	B	105	M85x1,5	47,5			1536E / F37
MU-STAR-ST38/B/F42	STAR ST38	B	105	M85x1,5	47,5			171E / F42
MU-STAR-ST38/B/F48	STAR ST38	B	105	M85x1,5	47,5			173E / F48
MU-STAR-SV38R/A/F37	STAR SV38-R	A	94	M80x1,5	70			1536E / F37
MU-STAR-SV38R/A/F48	STAR SV38-R	A	94	M80x1,5	70			173E / F48

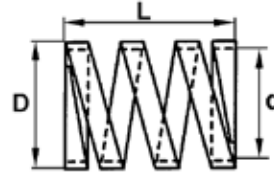
A = Hauptspindel - main spindle    B = Abgreifspindel - sub spindle

# Druckfedern *Pressure Springs*



### Druckfedern für Spannzangen Flachdraht

### Springs for Collets Flat Wire



**D = Nennmaß, reales Maß kleiner**  
*nominal size, real size less*

**d, L = ungefähre Angaben, ohne Gewähr**  
*approximately, no guarantee*

Bestell-Nr. order-no.	D	L <sub>ca</sub>	d
DF07F 4.3-52	7	52	4,3
DF13F 10-28	13	28	10
DF15F 11.5-22	15	22	11,5
DF15F 11.5-28	15	28	11,5
DF15F 11.5-33	15	33	11,5
DF16F 12.5-24	16	24	12,5
DF16F 12.5-34	16	34	12,5
DF18F 15.5-21	18	21	15,5
DF18F 15-30	18	30	15
DF20F 16-15	20	15	16
DF20F 16-28	20	28	16
DF20F 16.5-30	20	30	16,5
DF20F 16.5-37	20	37	16,5
DF20F 18-45	20	45	18
DF22F 18.5-22	22	22	18,5
DF22F 18.5-32	22	32	18,5
DF22F 18.5-38	22	38	18,5
DF25F 21.5-25	25	25	21,5
DF25F 21.5-33	25	33	21,5
DF25F 22-44	25	44	22
DF25F 22-48	25	48	22
DF25F 20.5-50	25	50	20,5
DF27F 23-25	27	25	23
DF27F 23-28	27	28	23
DF27F 23-32	27	32	23
DF27F 23-35	27	35	23
DF27F 23-40	27	40	23
DF27F 23-45	27	45	23
DF27F 24-50	27	50	24
DF28F 23-22	28	22	23
DF30F 25-36	30	36	25
DF30F 25-42	30	42	25
DF30F 26-48	30	48	26
DF30F 26.5-42	30	42	26,5
DF32F 26-15	32	15	26
DF32F 26.5-21	32	21	26,5
DF32F 26-32	32	32	26
DF32F 26.5-38	32	38	26,5

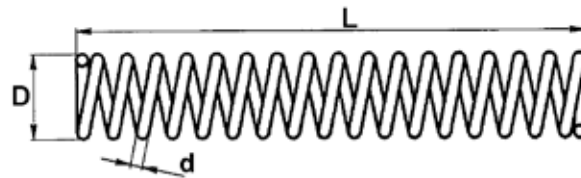
Bestell-Nr. order-no.	D	L <sub>ca</sub>	d
DF34F 30-36	34	36	30
DF34F 30-42	34	42	30
DF34F 30-50	34	50	30
DF35F 30-30	35	30	30
DF35F 30-36	35	36	30
DF37F 32-50	37	50	32
DF37F 32-73	37	73	32
DF37F 32.5-40	37	40	32,5
DF37F 33-38	37	38	33
DF37F 33-72	37	72	33
DF37F 33-84	37	84	33
DF38F 33-19	38	19	33
DF38F 33-24	38	24	33
DF38F 32-32	38	32	32
DF40F 36-45	40	45	36
DF40F 36-48	40	48	36
DF40F 36-92	40	92	36
DF40F 36-60	40	60	36
DF40F 36.5-37	40	37	36,5
DF42F 36.5-46	42	46	36,5
DF46F 42-42	46	42	42
DF48F 42-32	48	32	42
DF48F 43-46	48	46	43
DF48F 43-73	48	73	43
DF48F 44-42	48	42	44
DF66F 58-80	66	80	58

Tw. nur noch Restbestände, bitte anfragen

Partially remainders only, please request

### Druckfedern Runddraht

### Pressure Springs Round Wire



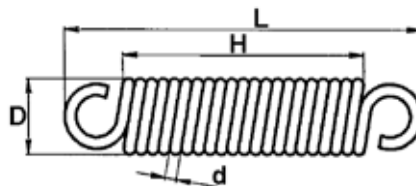
Bestell-Nr. order-no.	D	L	d	Funktion function	Maschine machine
DF08R 5.4-25	8	25	1		
DF12R 8-155	12	155	1,6	Waagerechtschlitten - <i>horizontal slide</i>	TRAUB TD 16-26-36
DF13R 10-38	13	38	1		

teilweise nur noch Restbestände, bitte anfragen

Partially remainders only, please request

### Zugfedern

### Pulling Springs



Bestell-Nr. order-no.	D	H	L	d	Für Artikel for article	Funktion function	Maschine machine
V719.101	13	32	58	1,5	V660.100 - V660.110	Stoppanschlag - <i>bar stop</i>	TRAUB A 15-20-25
V719.102	15	34	58	2	V624.100	Langdreheinrichtung - <i>lide for lathe</i>	TRAUB A 15-20-25
V719.103	10	53	73	1,5		Gewindedreheinrichtung <i>tapping equipment</i>	TRAUB A 15-20-25
V719.601	15	45	71	2	V660.600		TRAUB A 36-42-60
V719.602	16	97	129	2,2	V624.600		TRAUB A 36-42-60



# Führungsbüchsen Anzugsmuttern

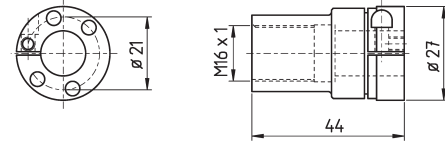
## *Guide Bush Nuts*



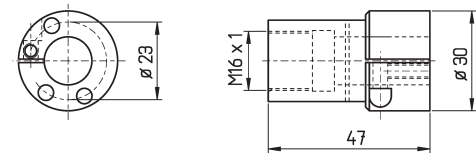


**Führungsbüchsen-Anzugsmuttern  
CITIZEN**
**Guide Bush Nuts  
CITIZEN**

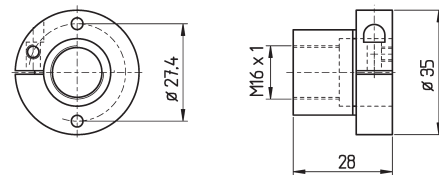
<b>CITIZEN B12</b>
Bestell-Nr. order-no.
FVM.B12



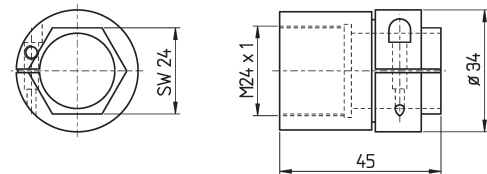
<b>CITIZEN M16</b>
Bestell-Nr. order-no.
FVM.M16



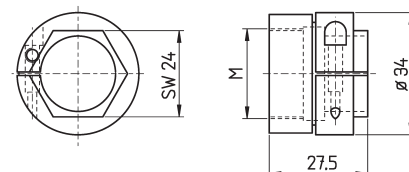
<b>CITIZEN</b>
Bestell-Nr. order-no.
FVM.F853



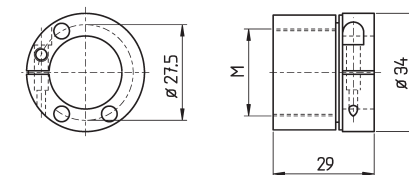
<b>CITIZEN L16</b>
Bestell-Nr. order-no.
FVM.L16



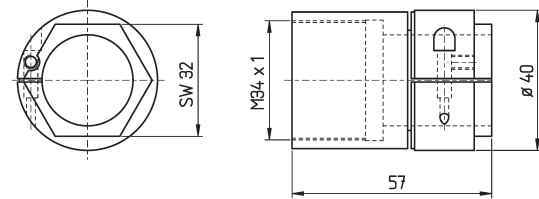
<b>CITIZEN L20 / M20</b>	
Bestell-Nr. order-no.	<b>M</b>
FVM.L20	M25 x 1
FVM.L20-M27	M27 x 1
mit Gew. M27 x 1 für vergrößerten Durchlass bis 23mm <i>enlarged to 23 mm admission, thread M27 x 1</i>	



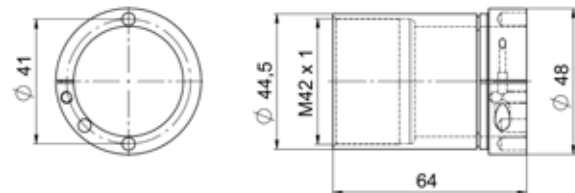
<b>CITIZEN M20</b>	
Bestell-Nr. order-no.	<b>M</b>
FVM.M20	M25 x 1
FVM.M20-M27	M27 x 1
mit Gew. M27 x 1 für vergrößerten Durchlass bis 23mm <i>enlarged to 23 mm admission, thread M27 x 1</i>	



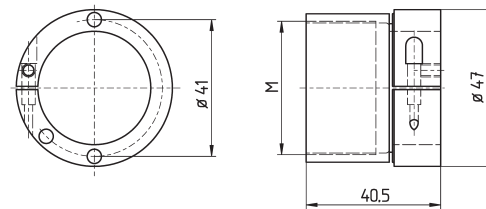
CITIZEN M25 / L25	
Bestell-Nr. order-no.	
FVM.L25	



CITIZEN M332	
Bestell-Nr. order-no.	M
FVM.M332-M42	M42x1



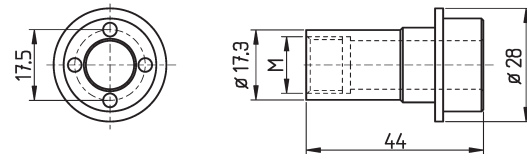
CITIZEN A32	
Bestell-Nr. order-no.	M
FVM.A32	M40 x 1
FVM.A32-M42	M42 x 1
mit Gew. M42 x 1 für vergrößerten Durchlass bis 23mm <i>enlarged to 23 mm admission, thread M27 x 1</i>	



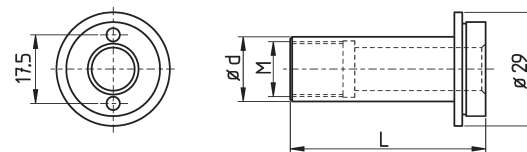
### Führungsbüchsen-Anzugsmuttern STAR

### Guide Bush Nuts STAR

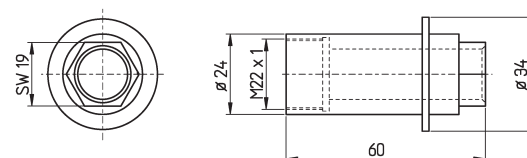
STAR SR10J	
Bestell-Nr. order-no.	M
FVM.SR10J-M14	M14 x 1
FVM.SR10J-M15	M15 x 1



STAR SW7			
Bestell-Nr. order-no.	L	d	M
FVM.38701060	51	15	M10 x 0,75
FVM.38701220	50	16,5	M14 x 1
FVM.38701330	45	16,5	M14 x 1

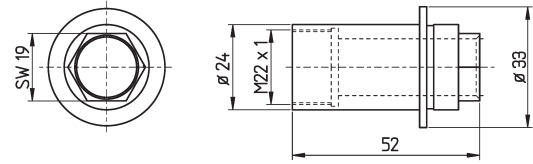


STAR RNC16 - 10017	
Bestell-Nr. order-no.	
FVM.RNC16	

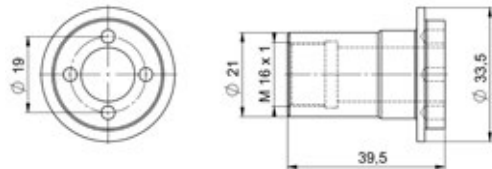


## Guide Bush Nuts

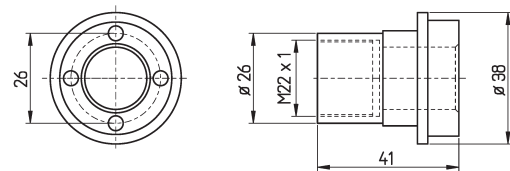
<b>STAR SST16</b>	
Bestell-Nr. order-no.	
FVM.SST16	



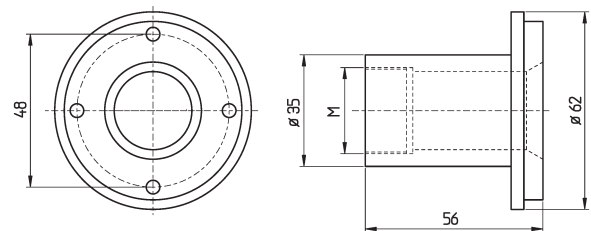
<b>STAR SB12R</b>	
Bestell-Nr. order-no.	<b>M</b>
FVM.SB12R	M16 x 1



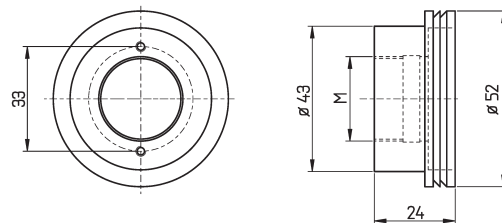
<b>STAR SB16</b>	
Bestell-Nr. order-no.	
FVM.SB16	



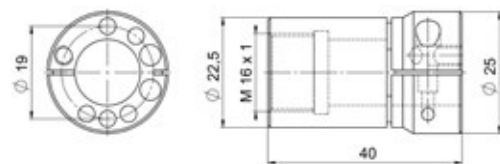
<b>STAR SV20</b>	
Bestell-Nr. order-no.	<b>M</b>
FVM.SV20	M25 x 1
FVM.SV20-M27	M27 x 1
erweitert - <i>enlarged to</i> M27 x 1	



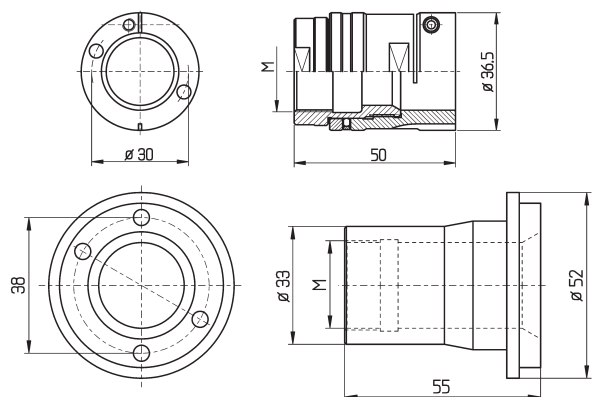
<b>Star SR20J / SR20RIII</b>	
Bestell-Nr. order-no.	<b>M</b>
FVM.SR20J	M25 x 1
FVM.SR20J-M27	M27 x 1
erweitert - <i>enlarged to</i> M27 x 1	



<b>Star SW12RII</b>	
Bestell-Nr. order-no.	<b>M</b>
FVM.SW12RII	M16 x 1



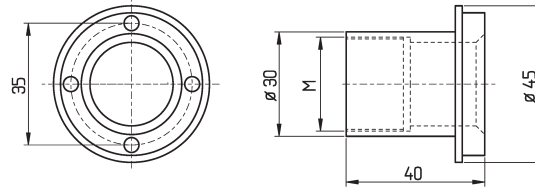
<b>Star SW20 / SR20RIV</b>		
Bestell-Nr. order-no.	<b>M</b>	
FVM.SW20	M25 x 1	
FVM.SW20-M27 *	M27 x 1	
FVM.SW20-2-M25	Type 2	M25 x 1
FVM.SW20-M27-2 *	Type 2	M27 x 1
FVM.SW20-3	Type 3	M25 x 1
FVM.SW20-M27-3 *	Type 3	M27 x 1
Einsatz von Typ 2 nur mit original Umbaukit von STAR möglich - <i>use of type 2 is possible with original kit from STAR only.</i>		
* erweitert - <i>enlarged to</i> M27 x 1		



Typ 2:

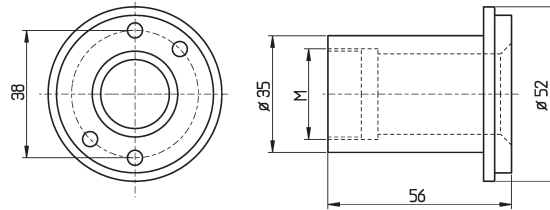
## STAR SR20

Bestell-Nr. order-no.	M
FVM.SR20	M25 x 1
FVM.SR20-M27	M27 x 1
erweitert - <i>enlarged to</i>	M27 x 1



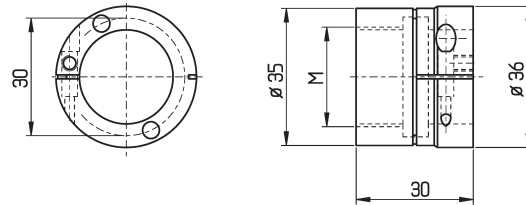
## STAR SB20

Bestell-Nr. order-no.	M
FVM.SB20	M25 x 1
FVM.SB20-M27	M27 x 1
erweitert - <i>enlarged to</i>	M27 x 1



## STAR SB20RE

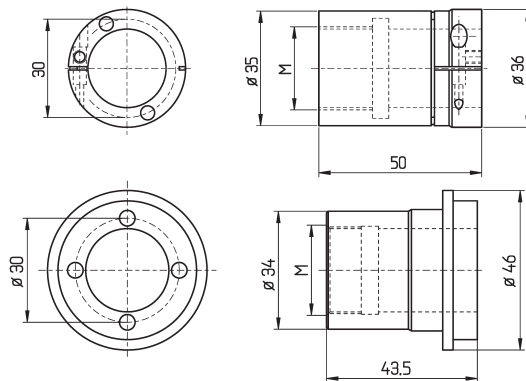
Bestell-Nr. order-no.	M
FVM.SB20RE	M25 x 1
FVM.SB20RE-M27	M27 x 1
erweitert - <i>enlarged to</i>	M27 x 1



## STAR SB20RG

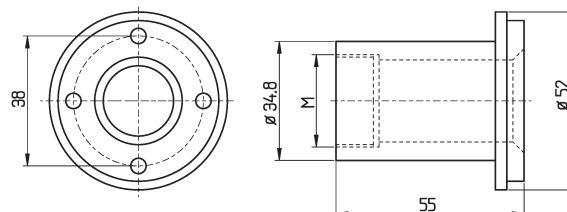
Bestell-Nr. order-no.	M
FVM.SB20RG	M25 x 1
FVM.SB20RG-M27 *	M27 x 1
<b>Ab - from S/N 540:</b>	
FVM.SB20RG-new	M25 x 1
FVM.SB20RG-M27-new *	M27 x 1
* erweitert - <i>enlarged to</i>	M27 x 1

Typ "new":



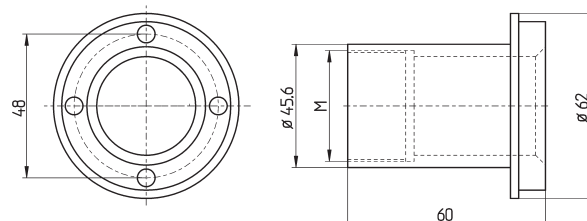
## STAR ECAS20 / SR20RI/II / ST20

Bestell-Nr. order-no.	M
FVM.ECAS20	M25 x 1
FVM.ECAS20-M27	M27 x 1
erweitert - <i>enlarged to</i>	M27 x 1



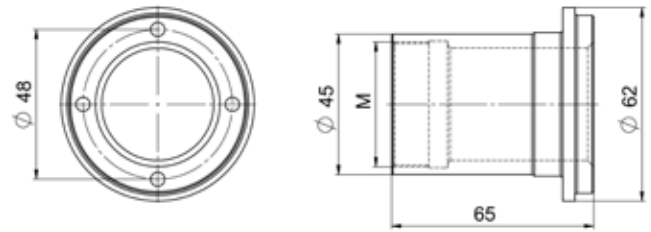
## STAR ECAS32 / SV32 / SR32

Bestell-Nr. order-no.	M
FVM.ECAS32	M40 x 1
FVM.ECAS32-M42	M42 x 1
erweitert - <i>enlarged to</i>	M42 x 1



*Guide Bush Nuts*

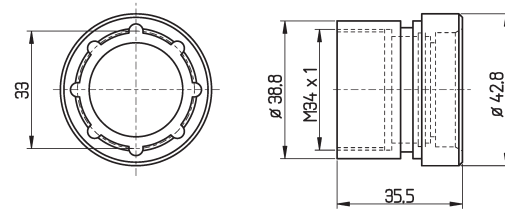
STAR SR32JII	
Bestell-Nr. order-no.	M
FVM.SR32JII	M40 x 1
FVM.SR32JII-M42	M42 x 1



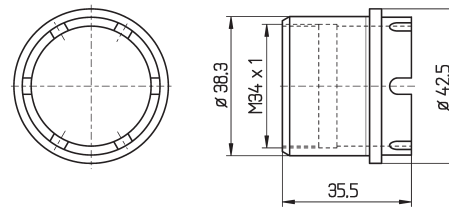
Führungsbüchsen-Anzugsmuttern  
GILDEMEISTER

*Guide Bush Nuts*  
*GILDEMEISTER*

GILDEMEISTER GLD25	
Bestell-Nr. order-no.	
FVM.GLD25	

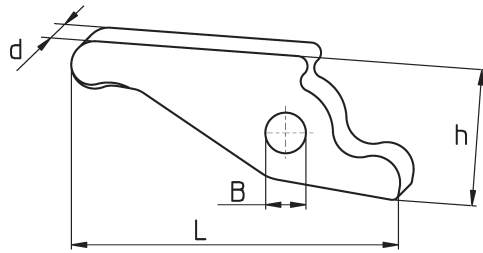


GILDEMEISTER SPEED20	
Bestell-Nr. order-no.	
FVM.SPEED20	

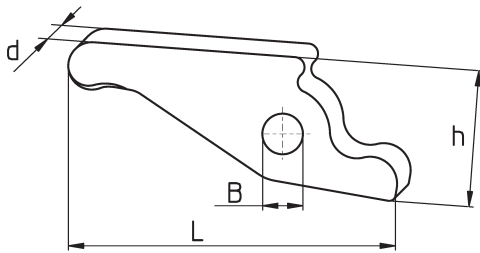


# Spannfinger *Toggles / Chuck Levers*



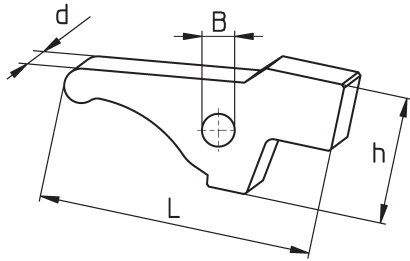


	Bestell-Nr. order-no.	Maschine machine	Spindel spindle	Orig. Ersatzteil-Nr. orig. spare part no.	d	L	h	B	Pin
<b>BECHLER</b>									
	SF10.0803	BR 20.BR 12		441 335	12,0	77,0	28,6	6,0	
<b>CITIZEN</b>									
	SFA20-Sonder	A20			8,0	51,0	18,5	6,0	
	SFC16L1	L16 E / L20	B	L216 C 114	6,0	55,0		4,0	4
	SFC16L6	L16 E / L20	A		10,0	73,0		8,0	3
	SF10.1005	B12 / BS20 / K16 / C16 / L20	A	F 412 SC117	8,0	55,0	21,3	6,0	2
	SF10.1005	C16 / L20	B		8,0	55,0	21,3	6,0	2
	SF10.1006	B12	B	B 12 U 50 C 416	4,0	36,0		4,0	1
	SF10.1007	M 20 / M 32 / A20 / C32 / L25			10,0	72,0	24,0	8,0	3
	V084.162	G16			6,0	52,0	17,5	4,0	
	SF10.1008	L16/N / L16/6 / L10 / L20 / A20		L 216 U 41 B 122	6,0	52,2		4,0	4
	SF10.1012	BS20 / K16	B	B 20 U 50 C 111	8,0	25,5		6,0	
	SF10.1014	B12	B	B 312 U 53 413	6,0	44,0		4,0	5
<b>Stifte passend für CITIZEN <i>suitable pins</i></b>									
	<b>Stift pin</b>	<b>Bestell-Nr. order-no.</b>	<b>Ø x l</b>						
	1	SF10.1010	4 m6 x 22						
	2	SF10.1009	6 m6 x 40						
	3	SF10.1004	8 m6 x 45						
	4	SF10.1003	4 m5 x 30						
	5	SF10.1015	4 h6 x 30						
	SF10.1016	A32new / A20			10,0	91,0		8,0	
<b>FEINLER</b>									
	SFA10	FA 10 / FA 15 / S8			6,9	49,5	19,0	6,0	
	SF10.0204			Stift - <i>bolt</i> 6 h6x3x					
<b>GAUTHIER</b>									
	SF10.1201	GM127 - 4mm		05.03.011	5,9	56,6	15,5	4,0	
	SF10.1203			Stift 4x24					
	SF10.1202	GM127 - 5mm		05.03.012	5,9	56,6		5,0	
	SF10.1204			Stift - <i>bolt</i> 5x24					

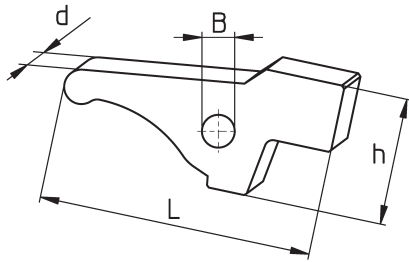


	Bestell-Nr. order-no.	Maschine machine	Spindel spindle	Orig. Ersatzteil-Nr. orig. spare part no.	d	L	h	B
<b>GILDEMEISTER</b>								
	SF10.0612	AS67		355-10-2130/001	37,7	86,2		
	SF10.0613	AS67		355-10-2130/002	37,8	87,5		
	SF10.0624	GLD20 / GLD25 / GLD32 / Sprint 32		54.10.119	10	58,0	25,0	7,0
	SF10.0625	GM16 AC		53.01.334-1189	8,0	61,0		8,0
	SF10.0626	GS20 / GM20		31.01.108	11,5	67,8		
	SF10.0629	GLD12 / GLD16 / GD16 / GD20	B	55.10.107	10	53,5	28,6	7,0
	SF10.0631	GM35 / GM 32		35.01.130	19,5	102,6	34,5	
	SF10.0633	MSL60/7 / Sprint32 linear / Sprint42	B	56.10.322-03	10,0	55,0		7,0
	SF10.0636	Speed20 / Speed20-8	A	21.10.141				
	SF10.0636	Speed20	B					
	SF10.0637	Speed12 / Sprint 20 / Speed20-8	B	20.10.136	10,0	56,4		7,0
	SF10.0638	Sprint42	A	26.10.123	13,0	99,4	32,0	10,0
	SF10.0640	GM35/8 / GMC35		42.01.293	15,5	95,5	29,8	
	SF10.0641	GMC20 S		51.01.284	11,8	65,5	22,1	
	SF10.0645	GD32		56.10.129				
	SF10.0651	Sprint32 / 42		26.10.196				
	SF10.0655	Sprint32 / 42		26.10.147				
<b>HANWHA</b>								
	SF10.3385	Hanex17 / XD 20 SL16 / SL20S / ML20	A	BSS 3000-021 3170-M210-1060				
	SF10.3380	Hanex 25 / ML20 / ML26 XD20 / XD32 HPD SL26S/H / SL32S/ SL20 / 26 / 32 / 35HP2		SSS 7000-012 3192-M011-1080				
	SF10.3387	Hanex 25 / ML26 SL26S/H / SL32S/ SL20 / 26 / 32 / 35HP2 32HPD (A-Sp.)		SSS 3000-015 3173-M010-1140				
	SF10.3381	SL12 / XD12	A	3184-M010-1130 NPM 0100 S 113				
	SF10.3392	STL38H		ST 11000-819				
	SF10.3393	XD20V / XD20/26II / XE20/26	A	PD11000-009				
	SF10.3393	XD20V / XD20/26II / XE20/26	B	PC16000-105				
	SF10.3388	XD26H	B	DA 15000-005				
	SF10.3389	XD26H	A	SM 02026-001				
	SF10.3390	XD32H	A+B	CA 11000-013A				
<b>INDEX</b>								
	SFDG	DG / ON / OR		AA1371	11,8	66,1	17,2	
	SFC29	C29		C29591	15,3	74,2	20,0	
	SFB42	B36 / B42 / B52 / B60		A73281	19,9	100,1	24,2	
	SFC16L1							
	SFC16L2							





	Bestell-Nr. order-no.	Maschine machine	Spindel spindle	Orig. Ersatzteil-Nr. orig. spare part no.	d	L	h	B	Pin
<b>SCHÜTTE</b>	SF10.1717	SF26 / 32		C3220-B-23Z	17,5	92,2			
<b>SKODA-MAS</b>	SF10.1801	A12 / A20 B		321 1512 E 4L28	13,5	74,1			
<b>STAR</b>	SF10.2651	ECAS 20	B	540-39-600/620	10,0	67,0		8,0	9
	SF10.2654	ECAS 32T	A	580-320-70	12,0	89,7		8,0	4
	SF10.2655	ECAS 32T A48	B	580-840-70	12,0	77,0		8,0	4
	SF10.2601	JNC16	A	025-32-060/080	10,0	72,5		6,0	3
	SF10.2602	JNC25/32		052-32-070/090	14,0	69,0		8,0	5
	SF10.2609	KJR16	A	250-32-090/100	10,0	68,0		6,0	3
	SF10.2616	KJR16	B	252-32-070/090	8,0	34,4		6,0	2
	SF10.2622	KJR25	A	260-32-070/090	12,0	80,0		8,0	4
	SF10.2622	KJR25	B	262-32-070/090	12,0	80,0		8,0	4
	SF10.2622	KJR25 II	A	360-32-070/090	12,0	80,0		8,0	4
	SF10.2622	KJR25 II	B	362-32-080/100	12,0	80,0		8,0	4
	SF10.2606	KNC16 / 20	B	222-32-230/250	12,0	50,0		8,0	6
	SF10.2615	KNC16 / 20 mit Fase)	A	220-32-070/090	12,0	77,0		8,0	4
	SF10.2602	KNC25 / 32	A	200-32-070/090	14,0	69,0	30,0	8,0	5
	SF10.2608	KNC25 / 32	B	202-32-230/250	12,0	50,0	25,5	8,0	6
	SF10.2602	KNC25 / 32 II	A	340-32-070/090	14,0	69,0		8,0	5
	SF10.2608	KNC25 / 32 II	B	342-32-230/250	12,0	50,0		8,0	6
	SF10.2620	KNC32 II	B	342-32-231/250	12,0	54,0		8,0	6
	SF10.2609	RNC16	A	210-32-060/080	10,0	68,0		6,0	3
	SF10.2610	RNC16	B	270-82-080/100	6,0	32,5		5,0	1
	SF10.2620	RNCSR32	B	342-32-231/250	12,0	54,0		8,0	6
	SF10.2609	SA12 / 16	A	460-32-100/120	10,0	68,0		6,0	3
	SF10.2624	SA12 / 16	B	460-82-080/100	8,0	39,0		6,0	2
	SF10.2658	SB12RE / RN	A+B	0M0-83-070	8,0	39,0		6,0	
	SF10.2658	SB12RG		IL0-32-820	8,0	39,0		6,0	
	SF10.2624	SB16	B	480-82-070	8,0	39,0		6,0	2
	SF10.2609	SB16	A	460-32-100/120	10,0	68,0		6,0	3
	SF10.2609	SE / SH16	A	400-32-100/120	10,0	68,0		6,0	3
	SF10.2619	SH 7		410-32-100/120	8,0	56,0		6,0	8
	SF10.2601	SNC15		196-32-060/080	10,0	72,5		6,0	3
	SF10.2611	SNC25		091-32-060/080	14,0	85,0		8,0	5
	SF10.2624	SR10J	A	460-82-080/100	8,0	39,0		6,0	2
	SF10.2625	SR10J	B	690-83-070/090	5,0	40,0		6,0	10
	SF10.2607/9	SR16	A	310-32-090/100	10,0	68,0		6,0	3
	SF10.2613	SR16	B	312-32-070/090	8,0	39,0		6,0	2
	SF10.2651	SR16R	A/B	540-39-100	10,0	67,0		8,0	9
	SF10.2606	SR20	B	322-32-070/090	12,0	50,0		8,0	6
	SF10.2606	SR20J	B	322-32-070/090	12,0	50,0		8,0	6

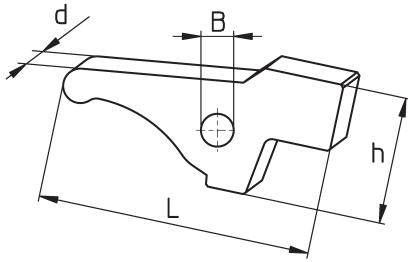


	Bestell-Nr. order-no.	Maschine machine	Spindel spindle	Orig. Ersatzteil-Nr. orig. spare part no.	d	L	h	B	Pin
	SF10.2607/9	SR20J	A	460-32-100/120	10,0	68,0		6,0	3
	SF10.2650	SR20R	B	540-84-050/070	12,0	57,0		8,0	6
	SF10.2651	SR20R	A	540-39-600/620	10,0	67,0		8,0	9
	SF10.2650	SR20RII / III	B	660-84-050	12,0	57,0		8,0	6
	SF10.2651	SR20RII / III	A	660-39-600	10,0	67,0		8,0	9
	SF10.2622	SR20 / 32		330-32-090/100	12,0	80,0		8,0	4
	SF10.2620	SR32	B	332-32-090/110	12,0	54,0		8,0	6
	SF10.2653	SR32J	A+B	670-32-090/110	12,0	67,6		8,0	6
	SF10.2609	SST16		300-32-090/100	10,0	68,0		6,0	3
	SF10.2609	SST16	A	210-32-060/080	10,0	68,0		6,0	3
	SF10.2612	SST16	B	302-32-070/090	8,0	39,0		6,0	2
	SF10.2656	ST38	A+B	0B0-32-130/100					11
	SF10.2651	SV12	A	540-39-600/620	10,0	67,0		8,0	9
	SF10.2652	SV12	B	452-32-100/120	10,0	72,0		8,0	9
	SF10.2652	SV12		823-00-306	10,0	72,0		8,0	9
	SF10.2621	SV20	A+B	420-32-060/080	12,0	78,0		8,0	4
	SF10.2651	SV20R	B	1B0-83-130	10,0	67,0		8,0	9
	SF10.2622	SV32	A	440-32-090	12,0	80,0		8,0	4
	SF10.2622	SV32	A	430-32-090	12,0	80,0		8,0	4
	SF10.2623	SV32J	B	442-32-090/110	12,0	62,0		8,0	6
	SF10.2619	SW7 / R	A	380-32-130/150	8,0	56,0		6,0	8
	SF10.2619	SW7 / R	B	382-32-110/130	8,0	56,0		6,0	8
	SF10.2659	SW12R II	B	1H0-83-120	10,0	67,0		8,0	10
	SF10.2651	SW20	A	540-39-600/620					
	SF10.2616	VNC20	B	749-21-180/190	8,0	34,4		6,0	2
	SF10.2615	VNC20 ohne Fase	A	750-32-060/080	12,0	77,0		8,0	4
	SF10.2602	VNC32		780-32-060/080	14,0	69,0		8,0	5

**Stifte passend für STAR *suitable pins***

Stift pin	Bestell-Nr. order-no.	Ø x l
1	SF11.2601	5 x 28,5
2	SF11.2602	6 x 31
3	SF11.2603	6 x 46
4	SF11.2604	8 x 48
5	SF11.2605	8 x 58
6	SF11.2606	8 x 36
8	SF11.2608	6 x 34
9	SF11.2609	8 x 50
10	SF11.2610	6 h7 x 30,5
11	SF11.2611	12 h7 x 46,5





	Bestell-Nr. order-no.	Maschine machine	Spindel spindle	Orig. Ersatzteil-Nr. orig. spare part no.	d	L	h	B
<b>STROHM</b>								
	SFM105	M75 / 105 / 125 / AS / 155AS		661434	6,9	50,2	21,0	
	SFM125	M125NAR		661435	6,9	50,2	21,0	6,0
	SF10.0204			Stift - <i>bolt</i> 6h6x36: 670439				
<b>TORNOS</b>								
	SFTR14B	AS14 / SAS16	B	2417	4,9	32,4		4,0
	SF10.0507	M7		MD 265	6,8	58,0	18,3	5,0
	SF10.0508	M7 verstärkt - <i>reinforced</i>		MD 9705	6,9	62,6		5,0
	SF10.0516	R10		5 RA 87	11,2	66,0		
	SF10.0517	R10 neu		5 RA 87-06	11,4	69,8		7,0
<b>TRAUB</b>								
	SFA15	A15		9mm 630030	8,8	61,7	17,0	
	SFA25/10	A15 / 20 / 25		10mm 632192	10,0	68,9	18,0	
	SFA25/12	A25 / TC15		12mm 616112	12,0	68,9	18,0	
	SFA26	A26 / 36		14mm 632202	14,0	68,7		
	SFA42	A42 / 60		14mm 630950	14,0	68,7		
	SFTB42	TB30 / 42 / 60 / 80 / TK / TF		18mm 614194	17,9	84,7	22,0	
	SFTD26	TD16 / 26 / 36		12mm 691325	12,0	74,0	18,3	
<b>TSUGAMI</b>								
	SF10.3326	S20 (B-Sp.) / S16		3192-S030-1060	8,0	57,0		
	SF10.3380	BS12 / BO12 (A-Sp.) BS12 / 18 / BO12-18 (B-Sp.) BS20 (A-Sp.) / S16 (A-Sp.) BS20 / 26 / 32 (B-Sp.) HS20 / 26 / 32 (B-Sp.) BN20 (A-Sp.) / HS207 (A-Sp.)		3192-M011-1080	12,0	57,0		
	SF10.3328	HS20 (A-Sp.) / HS207 (A / B-Sp.) BO205E (A / B-Sp.)		3262-M010-1301				
	SF10.3381	BO12 (A-Sp.)		3184-M010-1130	8,0	57,0		

