

# 2020

# IN3 PART

## Rollen - Rollenbolzen & Kurven *Rollers - Roller Bolt & Cams*



*passion for clamping*



		Seite Page
<i>Roller, Roller Bolts</i>	Rollen, Rollenbolzen	5
<i>Cams</i>	Kurven	13

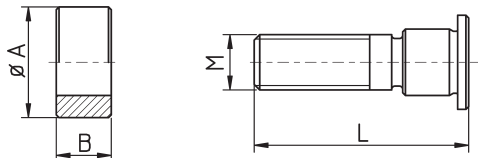


# Rollen, Rollenbolzen *Roller, Roller Bolts*



## Rollen, Rollenbolzen für TRAUB

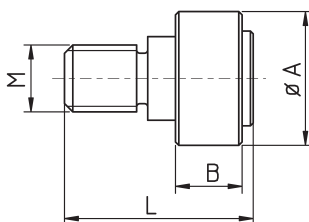
## Rollers, Roller Bolts for TRAUB



	Bestell-Nr. order-no.	A	M	L	B	Maschine machine	Orig. Ersatzteil-Nr. orig. spare part no.
Rolle - <i>roller</i>	U2010-TD	20			8	TRAUB TD16 - 26 - 36	
Rollenbolzen - <i>roller bolt</i>	U2015-TD		$\varnothing 10$ *	28			
Rolle - <i>roller</i>	U2010-A	16			10		620.116
Rollenbolzen - <i>roller bolt</i>	U2015-AL		M10	38		TRAUB A15 - 25	620.117
Rollenbolzen - <i>roller bolt</i>	U2015-AK		M10	23,5			
Rolle - <i>roller</i>	U2010-TB	22			12	TRAUB TB 42-60	
Rollenbolzen - <i>roller bolt</i>	U2015-TB		M12	35			
Rolle - <i>roller</i>	U2010-TA	25			14	TRAUB A 36 - 42 - 60	623.602
Rollenbolzen - <i>roller bolt</i>	U2015-TA		M12	40			623.604

\* = ohne Gewinde

\* = without thread

Rollen, Rollenbolzen  
für TRAUB mit NadellagerRollers, Roller Bolts  
for TRAUB with Needle Bearings

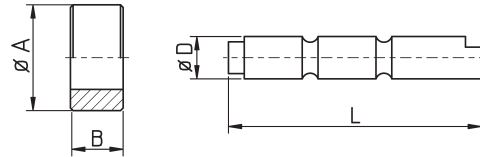
	Bestell-Nr. order-no.	A	M	L	B	Maschine machine	Orig. Ersatzteil-Nr. orig. spare part no.
Rolle komplett - <i>roller complete</i>	UTRA-TD	20	10 *	28	8	TRAUB TD16 - 36	312.269
Rolle komplett - <i>roller complete</i>	UTRA-TB	22	M12	34	12	TRAUB TB 42 - 60	615.153
Rolle komplett - <i>roller complete</i>	UTRA-TA	25	M12	40	14	TRAUB A 36 - 60	
Rolle komplett - <i>roller complete</i>	UTRA-A	16	M10	23	10	TRAUB A 25 / TB42	615 427
Exzenterrolle incl. Zubehör <i>Eccentric roller incl. accessory</i>	UTRA-EXC	22	10*	38		TRAUB TK / TG	675658 675660

\* = ohne Gewinde

\* = without thread

#### Rollen, Rollenbolzen für INDEX

#### Rollers, Roller Bolts for INDEX



#### Segmentrollen segment rolls

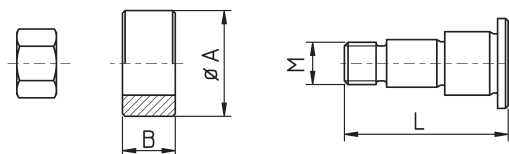
	Bestell-Nr. order-no.	A	D	L	B	Maschine machine	Orig. Ersatzteil-Nr. orig. spare part no.
Rollen - <i>rollers</i>	U2010-42	18	8		14	B30 B42 B60	A71502
	U2010-29	16	7		12	C19 C29	A51500
	U2010-18	14	6		12	12 18 25	A31500
Rollenbolzen - <i>roller bolt</i>	U2015-42		8	46		B30 B42 B60	A71472
	U2015-42Z		8	51			A71522
	U2015-29		7	40		C19 C29	A51470
	U2015-18		6	36		12 18 25	A31470
	U2015-18Z		6	42			A31520
Rolle - <i>rollers</i>	U2010-D12	14	6		8	OR ON DG12	
	U2010-DG	16	8	7,5	8	OR ON DG12	AA3030
Rollenbolzen - <i>roller bolt</i>	U2017-D12		6	22,4		OR ON DG12	AA2040
	U2015-D12		6	25		OR ON DG12	A78751
	U2015-D12Z		6	35		OR ON DG12	D17421

#### Rollen und Bolzen für Langdreheinrichtung Rollers, Roller Bolts for Lathes

Rolle - <i>roller</i>	U2010-42L	18	8			INDEX B	B 72151
Bolzen - <i>bolt</i>	U2015-42L		8	28			

#### Revolver - Schaltrollen für INDEX

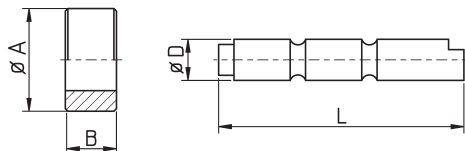
#### Revolver Sprockets for INDEX



	Bestell-Nr. order-no.	A	M	L	B	Maschine machine	Orig. Ersatzteil-Nr. orig. spare part no.
Schaltrolle - <i>sprocket</i>	U2210-42	18			10	B30 B42 B60 C19 C29	A74741
	U2210-18	13			8	12 18 25	A34742
	U2210-OR	11			7	OR ON DG12	AA5350
Rollenbolzen - <i>roller bolt</i>	U2215-42		M8x0,75	31		B30 B42 B60 C19 C29	A74752
	U2215-18		M6x0,75	24		12 18 25	A34752
	U2215-OR		M6x0,75	22		OR ON DG12	AA5340

## INDEX (STEINHÄUSER)

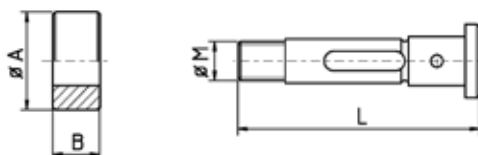
## INDEX (STEINHÄUSER)



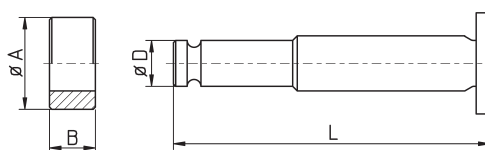
	Bestell-Nr. order-no.	A	D	L	B	Maschine machine	Orig. Ersatzteil-Nr. orig. spare part no.
Rolle - <i>roller</i>	U2010-S1	14	6	10	10	STEINHÄUSER StD	
Rolle - <i>roller</i>	U2010-S2	14	6	18	18		
Bolzen - <i>bolt</i>	U2015-S1		6	32			
Bolzen - <i>bolt</i>	U2015-S2		6	42			
Rolle - <i>roller</i>	U2010-MSG	25	8		15	INDEX MS25	M30101
Rolle - <i>roller</i>	U2010-MSK	16	8		8		AB9270
Bolzen - <i>bolt</i>	U2015-MS		8	52			M30103.10

## Rollen, Rollenbolzen für TORNOS

## Rollers, Roller Bolts for TORNOS



	Bestell-Nr. order-no.	A	B	L	M	Maschine machine	Orig. Ersatzteil-Nr. orig. spare part no.
Rolle - <i>roller</i>	U2010-SS	20	12			TORNOS AS/SAS	
Rollenachse - <i>roller axle</i>	U2015-SS			52	M8	TORNOS AS/SAS	

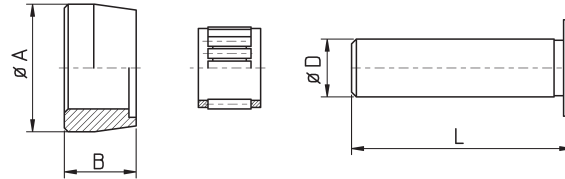


	Bestell-Nr. order-no.	A	D	L	B	Maschine machine	Orig. Ersatzteil-Nr. orig. spare part no.
Rolle - <i>roller</i>	U2010-TO	24			12	TORNOS AS/SAS	AS 1365



#### Rollen, Rollenbolzen

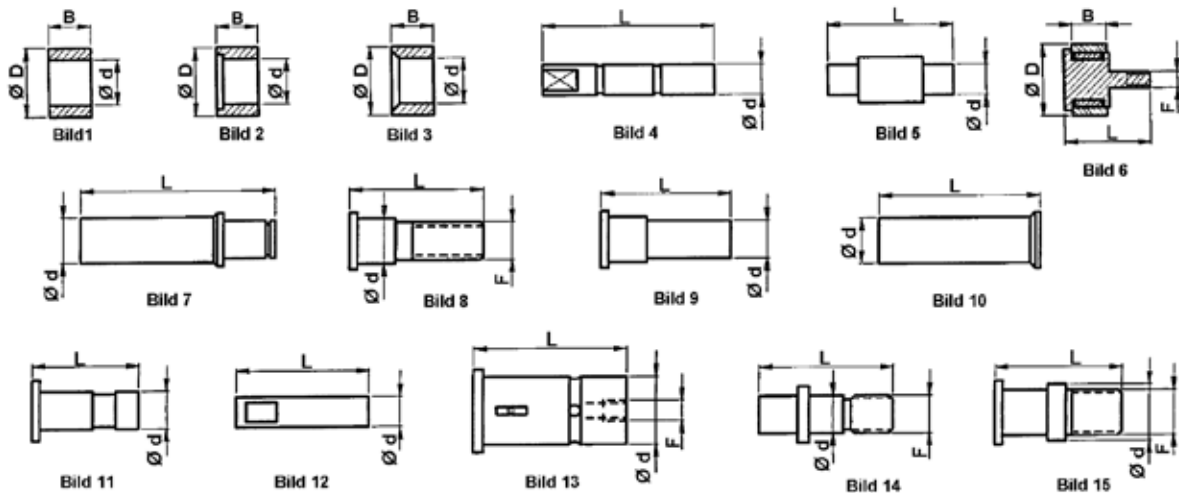
#### Rollers, Roller Bolts



	Bestell-Nr. order-no.	A	D	L	B	Maschine machine	Orig. Ersatzteil-Nr. orig. spare part no.
Rolle - <i>roller</i>	U2010-SAT	26,5			15	TORNOS AS14	
Rolle - <i>roller</i>	U2010-SA	26,5			15	TORNOS AS14	Original
Rollenbolzen - <i>roller bolt</i>	U2015-SAT		12	46		TORNOS AS14	
Nadellager	KBK121713					TORNOS AS14	
Rollenbolzen komplett <i>roller bolt complete</i>	U2010-SAS	26,5	12	40		TORNOS SAS 16	Original
Rolle - <i>roller</i>	U2011-SAS	26,5			15	SAS16	
Rollenbolzen - <i>roller bolt</i>	U2015-SAS		12	40		SAS16	

#### Rollen und Bolzen

#### Rollers and Bolts

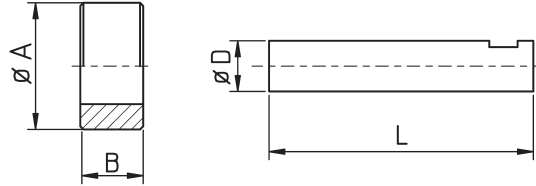


Bolzen - bolts				Rollen - rollers						Maschine machine	Best.-Nr. Bolzen+Roller order-no. bolts+rollers
Bestell-Nr. order-no.	d	L	F	Bild	Bestell-Nr. order-no.	D	d	B	Bild		
V514.016	10	40		4	V514.016B	17	10	14	1	ATA 25-40	
V514.531	6,35	33		12	V514.532	12,8	6,35	9,2	1	BROWN E SHARPE	
V514.533	7	31		4	V514.534	14	7	11,7	1	BROWN E SHARPE	
V514.535	8	30,5		4	V514.536	14	8	11,7	1	BROWN E SHARPE	
V514.291	12	26	M10x1	8	V514.292	18	12	11	2	CASER 26-30	
V514.551	8	30		4	V514.147B1	18	8	12	1	DAR 46	
					V514.147B2	18	8	22	1	DAR 46	
					V514.147B3	16	8	10	1	DAR 46	
V514.941	8	46		4	V514.942	18	8	14	1	DAR 46	V514.940
V514.511	10	37,5	M10	14	V514.512	18	10	10	1	FEINLER 10-15	V514.510
					V514.513	16	8	8	1	FEINLER 10-15	

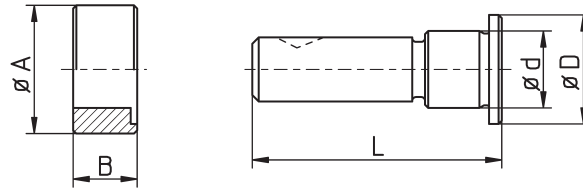
Bolzen - bolts					Rollen - rollers					Maschine machine	Best.-Nr. Bolzen+Roller order-no. bolts+rollers
Bestell-Nr. order-no.	d	L	F	Bild	Bestell-Nr. order-no.	D	d	B	Bild		
U2010-GKA	8	32		12	U2010-GA	20	8	10	1	GILDEMEISTER	
U2015-GA	8	45		12	U2010-GA	20	8	10	1	GILDEMEISTER	
U2015-GAS	10	33		9	U2010-GAS	25	12	10	2	GILDEMEISTER	
V514.475	15	48		11	V514.476	30	15	15	2	GILDEMEISTER	
V514.481	18	40	M5	13	V514.482	29,5	18	13	2	GILDEMEISTER	
V514.485	20	45	M6	13	V514.486	30	20	15	2	GILDEMEISTER	
					V514.487	42	25	22	2	GILDEMEISTER AS32	
V514.485	20	45	M6	15	V514.486	30	20	15	2	GILDEMEISTER	
V514.241	12	36	M10	8	V514.242	18	12	14	2	GIORGI 20-25-32	V514.240
V514.261	10	62		8	V514.262	16	10,5	12	1	GIORGI 20-25-32	
V514.101	12	52		7	U2010-A	16	12	10	1	SAIC B26	V514.100
V514.231	12	36	M10	8	V514.232	18	12	10	2	SAIC B26-30	V514.230
V514.251	10	37		9	V514.242	18	12	14	2	SAIC B26-30	V514.250
V514.211	12	23	M8	8	V514.212	18	12	12	2	SAIC A30	
		32	M8	6		19		11	6	SAIC A30	V514.220
					V514.SE25	47	25	13	1	SCHÜTTE SE25 (SE25 D859)	V514.SE25
V514.421	8	43		4	V514.422	18	8	18	1	TAREX 42-52	V514.420
V514.101	12	52		7	U2010-A	16	12	10	1	TRAUB A15-20-25	V514.100
U2015-AK	12	23	M10	8	U2010-A	16	12	10	1	TRAUB A15-20-25	V514.100
U2015-AL	12	38	M10	8	U2010-A	16	12	10	1	TRAUB A15-20-25	V514.120
V514.711	12	23	M10	15	U2010-A	16	12	10	1	TRAUB A15-20-25	UTRA-A
U2015-TD	10	28		11						TRAUB TD16-26-36	V514.010
U2015-TD	10	28		11	V514.012B	20	13	8	1	TRAUB TD16-26-36	UTRA-TD
V514.159		54,8	M16x1		<i>Inkl. Kugellager / incl. ball bearing</i>				TRAUB TB60	655.159	
V514.021	8	33		5	V714.010	12	8	10	1	TRAUB TD16-26-36	
		28	M6x1	6		16		11	6	TRAUB TD16-26-36	V514.030
V514.601	14	52		7	U2010-A	16	12	10	1	TRAUB A36-42-60	V514.600
U2015-TA	15	40	M12	8	U2010-TA	25	15	14	2	TRAUB A36-42-60	V514.610
V514.711	12	23	M10	15	U2010-A	16	12	10	1	TRAUB TB30-42-60	UTRA-A
U2015-TB	15	34	M12	15	U2010-TB	22	15	11,7	2	TRAUB TB30-42-60	UTRA-TB
					V514.723	20	15	11,7	2	TRAUB TB30-42-60	
					V514.913	16	8	7,5	1	INDEX ON OR 12	
V514.811	18	45	M14	8	V514.812	25	18	14	2	SAIC B45	V514.810

Rollen, Rollenbolzen für  
GILDEMEISTER Mehrspindeldrehautomaten

Rollers, Roller Bolts for  
GILDEMEISTER Multi Spindle Lathes



	Bestell-Nr. order-no.	A	D	L	B	Orig. Ersatzteil-Nr. orig. spare part no.
Rolle - <i>roller</i>	U2010-GA	20	8		10	01.27.025
Rollenbolzen - <i>roller bolt</i>	U2015-GA		8	45		05.09.008
Rollenbolzen - <i>roller bolt</i>	U2015-GT		8	32		01.27.024



	Bestell-Nr. order-no.	A	B	L	D	d	Orig. Ersatzteil-Nr. orig. spare part no.
Rolle - <i>roller</i>	U2010-GAS	25	10				06.07.009
Rollenbolzen - <i>roller bolt</i>	U2015-GAS			33	16	12	06.07.010
Rollenbolzen - <i>roller bolt</i>	U2016-GAS			28,5	16	12	15.21.107

GILDEMEISTER GS35							
Rolle - <i>roller</i>	U2010-GS	29,5	18				703-09-0021-001
Rollenbolzen - <i>roller bolt</i>	U2015-GS			55	22	18	3703-21-0021

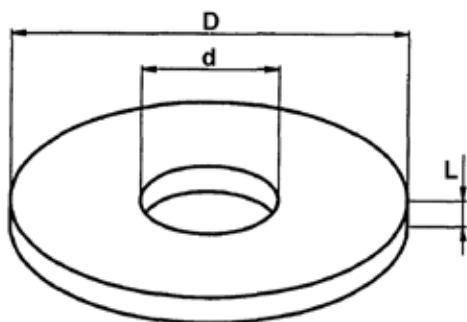


# Kurven *Cam Disks*



## Kurvenscheiben Stahl

## Cam Disks Steel Version



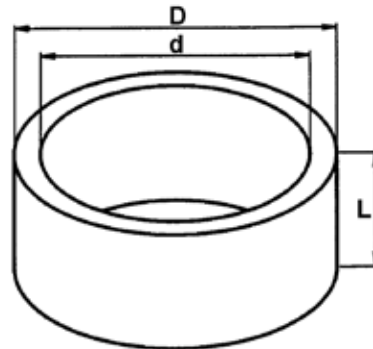
Bestell-Nr. order-no.	D	d	L
V400.0783010	78	30	10
V400.0804610	82	46	10
V400.0864610	86	46	10
V400.0883010	88	30	10
V400.0884610	88	46	10
V400.0893012	89	30	12
V400.0902008	90	20	8
V400.0903006	90	30	6
V400.0904510	90	45	10
V400.0923006	92	30	6
V400.0964012	98	40	12
V400.0964410	96	44	10
V400.0994012	99	40	12
V400.1002408	100	24	8
V400.1002410	100	24	10
V400.1002808	100	28	8
V400.1003010	100	30	10
V400.1063010	106	30	10
V400.1063012	106	30	12
V400.1102008	110	20	8
V400.1102606	110	26	6
V400.1102808	110	28	8
V400.1103208	110	32	8
V400.1104206	110	42	6
V400.1104512	110	45	12
V400.1104612	110	46	12
V400.1153006	115	30	6
V400.1153010	115	30	10
V400.1185812	118	58	12
V400.1202008	120	20	8
V400.1202410	120	24	10
V400.1202610	120	26	10

Bestell-Nr. order-no.	D	d	L
V400.1202808	120	28	8
V400.1203006	120	30	6
V400.1203007	120	30	7
V400.1203208	120	32	8
V400.1204010	120	40	10
V400.1236412	123	64	12
V400.1243208	124	32	8
V400.1244208	124	42	8
V400.1252008	125	20	8
V400.1252608	125	26	8
V400.1252808	125	28	8
V400.1253208	125	32	8
V400.1254208	125	42	8
V400.1302008	130	20	8
V400.1303006	130	30	6
V400.1303208	130	32	8
V400.1304008	130	40	8
V400.1304208	130	42	8
V400.1304512	130	45	12
V400.1402008	140	20	8
V400.1402410	140	24	10
V400.1402610	140	26	10
V400.1402808	140	28	8
V400.1403008	140	30	8
V400.1403208	140	32	8
V400.1403608	140	36	8
V400.1404010	140	40	10
V400.1404508	140	45	8
V400.1405010	140	50	10
V400.1503608	150	36	8
V400.1504010	150	40	10
V400.1505010	150	50	10

Bestell-Nr. order-no.	D	d	L
V400.1562808	156	28	8
V400.1584810	158	48	10
V400.1585810	158	58	10
V400.1602008	160	20	8
V400.1602408	160	24	8
V400.1602410	160	24	10
V400.1602610	160	26	10
V400.1602808	160	28	8
V400.1603006	160	30	6
V400.1603208	160	32	8
V400.1604010	160	40	10
V400.1604512	160	45	12
V400.1663208	166	32	8
V400.1703510	170	35	10
V400.1704010	170	40	10
V400.1753510	175	35	10
V400.1802008	180	20	8
V400.1803208	180	32	8
V400.1804010	180	40	10
V400.1904010	190	40	10
V400.2002008	200	20	8
V400.2002410	200	24	10
V400.2002610	200	26	10
V400.2003010	200	30	10
V400.2003208	200	32	8
V400.2003608	200	36	8
V400.2004010	200	40	10
V400.2102410	210	24	10
V400.2202010	220	20	10
V400.2202410	220	24	10
V400.2202610	220	26	10
V400.2203208	220	32	8
V400.2204010	220	40	10
V400.2402010	240	20	10
V400.2404010	240	40	10
V400.2502610	250	26	10
V400.2504010	250	40	10
V400.2602810	260	28	10
V400.2602812	260	28	12
V400.2604010	260	40	10
V400.2704010	270	40	10
V400.2804010	280	40	10
V400.3004010	300	40	10

Glockenkurven Stahl

Steel Tubes for Cams



Bestell-Nr. order-no.	L	D	d	Maschine machine	Funktion function				
V410.040	40	130	110	TRAUB TD 16-26-36	Reitstock <i>tailstock</i>  Revolver <i>revolver</i>				
V410.050	50								
V410.060	60								
V410.070	70								
V410.080	80								
V410.090	90								
V410.100	100								
V410.110	110								
V410.120	120								
V410.130	130								
V410.140	140								
V412.050	50					150	25	TRAUB A42-60 TRAUB TB42-60 SAIC B45 ITS 36-42-60	Reitstock <i>tailstock</i>  Revolver <i>revolver</i>
V412.060	60								
V412.070	70								
V412.080	80								
V412.090	90								
V412.100	100								
V412.110	110								
V412.120	120								
V412.130	130								
V412.140	140								
V412.150	150								

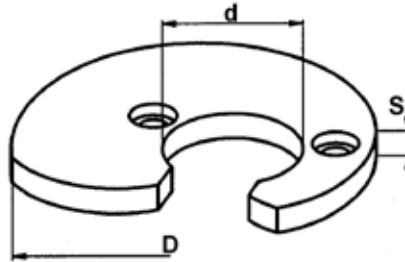
# 16 Kurven

Cams



**Kurven gehärtet  
für Quer- und Senkrechtsupport**

*Cam Disks Hardened, for  
Crosswire and Vertical Slide*



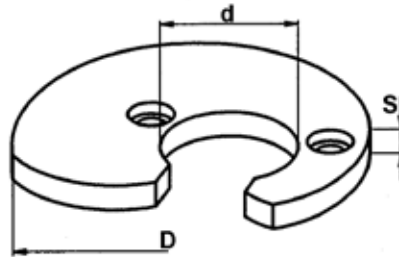
Bestell-Nr. order-no.	Winkel angle	Hub - stroke	D = 76 d = 30 S = 10	Maschine machine	Schlitten slide
V421.101	30°		0 1 2 3 4 5		
V421.101	60°		0 1 2 3 4 5 6 7 8		
V421.101	90°		0 1 2 3 4 5 6 7 8 9 10 11 12	TRAUB A15-20-25	Hor.
V421.101	120°		0 1 2 3 4 5 6 7 8 9 10 11 12 13 14 15 16	SAIC B26-30	Hor.
V421.101	150°		0 1 2 3 4 5 6 7 8 9 10 11 12 13 14 15 16	SAIC A26-30-32	Hor.-Vert
V421.101	180°		0 1 2 3 4 5 6 7 8 9 10 11 12 13 14 15 16	GIORGI 20-25-30-32	Hor.
V421.101	200°		0 1 2 3 4 5 6 7 8 9 10 11 12 13 14 15 16	ITS 26	Trav.
V421.101	220°		0 1 2 3 4 5 6 7 8 9 10 11 12 13 14 15 16 17 18 19 20	FEINLER FA10-15	Hor.-Vert
V421.101	240°		0 1 2 3 4 5 6 7 8 9 10 11 12 13 14 15 16 17 18 19 20	CASER 26-30	Hor.-Vert
V421.101	260°		0 2 4 6 8 10 12 14 16 18 20		

Bestell-Nr. order-no.	Winkel angle	Hub - stroke	D = 130 d = 45 S = 12	Maschine machine	Schlitten slide
V421.205	90°		0 1 2 4 5 6 8 10 12 14 15 16 18 20		
V421.205	120°		0 1 2 4 5 6 8 10 12 14 15 16 18 20 22		
V421.205	150°		0 1 2 4 5 6 8 10 12 14 15 16 18 20 22 24 25 26 28 30	ITS 36-42-60	Hor.-Vert
V421.205	180°		0 1 2 4 5 6 8 10 12 14 15 16 18 20 22 24 25 26 28 30 32		
V421.205	220°		0 1 2 4 5 6 8 10 12 14 15 16 18 20 22 24 25 26 28 30 32		



**Kurven gehärtet  
für Quer- und Senkrechtsupport**

**Cam Disks Hardened, for  
Crosswire and Vertical Slide**



Bestell-Nr. order-no.	Winkel angle	Hub - stroke	D = 96 d = 40 S = 12	Maschine machine	Schlitten - slide
V421.601	60°	0 1 2 3 4 5 6 8			
V421.601	90°	0 1 2 3 4 5 6 8 10 12 14			
V421.601	120°	0 1 2 3 4 5 6 8 10 12 14 16 18			
V421.601	150°	0 2 4 6 8 10 12 14 16 18 20 22			
V421.601	180°	0 2 4 6 8 10 12 14 16 18 20 22 24 26		TRAUB A26 TRAUB A36-42-60 SAIC B45 CASER 42-45-50	Hor.-Vert Hor. Hor. Hor.-Vert
V421.601	220°	0 2 4 6 8 10 12 14 16 18 20 22 24 26			
V421.601	260°	0 2 4 6 8 10 12 14 16 18 20 22 24 26			

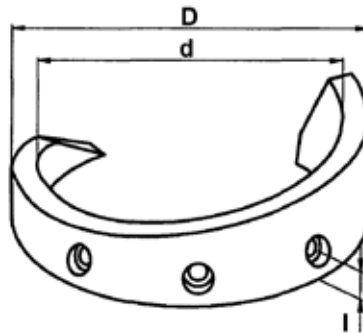
Bestell-Nr. order-no.	Winkel angle	Hub - stroke	D = 160 d = 45 S = 12	Maschine machine	Schlitten - slide
V421.701	90°	0 1 2 3 4 6 8 10 12 14 16 18 20			
V421.701	120°	0 1 2 3 4 6 8 10 12 14 16 18 20 22 24 26 28 30			
V421.701	150°	0 2 4 6 8 10 12 14 16 18 20 22 24 26 28 30 32		TRAUB TB30-42-60	Hor.-Vert
V421.701	180°	0 2 4 6 8 10 12 14 16 18 20 22 24 26 28 30 32			
V421.701	220°	0 2 4 6 8 10 12 14 16 18 20 22 24 26 28 30 32			

Bestell-Nr. order-no.	Winkel angle	Hub - stroke	D = 90 d = 45 S = 10	Maschine machine	Schlitten - slide
V422.101	60°	1 2 3 4 5 6 7 8			
V422.101	90°	1 2 3 4 5 6 7 8 9 10 11 12			
V422.101	120°	2 3 4 5 6 7 8 9 10 11 12 13 14 15			
V422.101	150°	2 3 4 5 6 7 8 9 10 11 12 13 14 15			
V422.101	180°	2 3 4 5 6 7 8 9 10 11 12 13 14 15 16		TRAUB A15-20-25	Vert.
V422.101	220°	2 3 4 5 6 7 8 9 10 11 12 13 14 15 16			
V422.101	240°	4 5 6 7 8 9 10 11 12 13 14 15 16			
V422.101	260°	4 6 8 10 12 14 16			

Bestell-Nr. order-no.	Winkel angle	Hub - stroke	D = 118 d = 58 S = 12	Maschine machine	Schlitten - slide
V422.601	90°	2 4 6 8			
V422.601	120°	2 4 6 8 10			
V422.601	150°	2 4 6 8 10 12 14 16 18 20 22 24		TRAUB A36-42-60	Vert.
V422.601	180°	2 4 6 8 10 12 14 16 18 20 22 24 26			
V422.601	220°	2 4 6 8 10 12 14 16 18 20 22 24 26			

**Glockenkurven**  
gehärtet, für Langdreheinrichtung

**Cam Tubes**  
Hardened, for Lathes

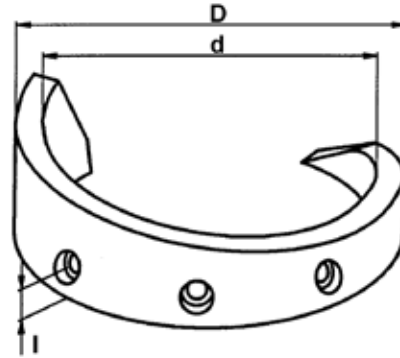


Bestell-Nr. order-no.	Winkel angle	Hub - stroke	D = 80 d = 60 l = 10	Maschine machine
V430.101	180°	10 15 20 25 30 35 40 50		TRAUB A 15-20-25
V430.101	220°	10 15 20 25 30 35 40 50 60		CASAR TA26-30
V430.101	240°	20 30 40 50 60		SAIC E26-30 A26-30-32 GIORGI 20-25-30-32/ ITS 26

Bestell-Nr. order-no.	Winkel angle	Hub - stroke	D = 115 d = 95 l = 15	Maschine machine
V430.601	180°	10 20 30 40 50 60		
V430.601	220°	10 20 30 40 50 60 70		TRAUB A26-36-42-60
V430.601	240°	40 60 80		

**Glockenkurven gehärtet,  
für Bohrreitstock**

**Cam Disks Hardened,  
for Bore Tailstock Equipment**

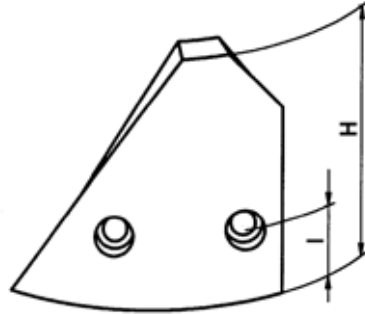


Bestell-Nr. order-no.	Winkel angle	Hub - stroke	D = 115 d = 95 l = 15	Maschine machine
V433.101	150°	0 5 8 10 12 15 18 20 23 25 28 30 35 40		TRAUB A 15-20-25
V433.101	180°	0 5 8 10 12 15 18 20 23 25 28 30 35 40 45 50 55 60		
V433.101	200°	0 5 10 15 20 25 30 35 40 45 50 60		
V433.101	220°	0 5 8 10 12 15 18 20 23 25 28 30 35 40 45 50 55 60 65 70		

Bestell-Nr. order-no.	Winkel angle	Hub - stroke	D = 150 d = 125 l = 20	Maschine machine
V433.601	150°	0 5 10 15 20 25 30		TRAUB A26-36-42-60 TRAUB TB30-42-60 ITS36-42-60 SAIC B45
V433.601	180°	0 10 15 20 25 30 35 40 45 50 55 60		
V433.601	200°	20 25 30 35 40 45 50 55 60		
V433.601	220°	10 15 20 25 30 35 40 45 50		
V433.601	220°	55 60 65 70 75 80 85 90		

Rückzugskurven gehärtet,  
für Bohrreitstock / Langdreheinrichtung

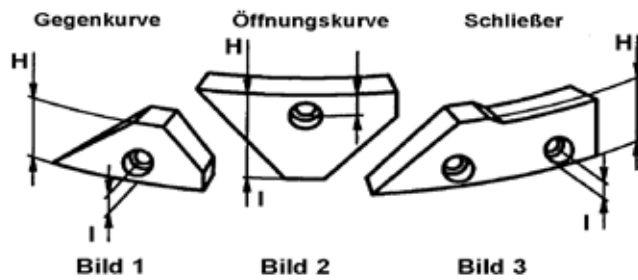
Cam Tubes for Return Hardened,  
for Bore Tailstock and Lathe Equipment



Bestell-Nr. order-no.	Winkel angle	H	I	Für Bestell-Nr. for order-no.	Funktion	Maschine machine
V437.101	60°	70	20	V433.101	Bohrreitstock	TRAUB A15-20-25
V437.103	50°	49	10	V430.101	Langdreheinrichtung	TRAUB - SAIC - ITS - GIORGI - CASAR 25
V437.104	90°	112	20	V433.103	Bohrreitstock	TRAUB TD 16-26-36
V437.201	56°	62	20	V433.201	Bohrreitstock	SAIC - ITS - GIORGI 20-25-30-32

Kurven gehärtet,  
für Zangenspanneinrichtung

Cam Tubes Hardened,  
for Open-Close Collet equipment



Bestell-Nr. order-no.	Bild	H	I	Maschine machine
V439.101	1	24		
V439.102	2	32	11	TRAUB - SAIC - ITS - GIORGI - 15-20-25-26-30-32
V439.103	3	29		
V439.601	1	32		
V439.602	2	35	12,5	TRAUB A 36-42-60
V439.603	3	39		
V439.701	1	42,5		
V439.702	2	49	12,5	TRAUB TB 30-42-60
V439.703	3	47		



