

# 2020


# IN 3 PART

**Werkzeuge für TRAUB - INDEX - STROHM**  
*Tools for TRAUB - INDEX - STROHM*



*passion for clamping*



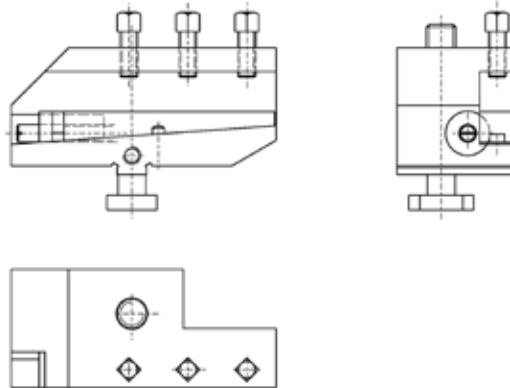
			<b>Seite</b> <i>Page</i>
<b>TRAUB</b>		<b>TRAUB</b>	<b>4</b>
<b>INDEX</b>		<b>INDEX</b>	<b>36</b>
<b>STROHM</b>		<b>STROHM</b>	<b>62</b>

**TRAUB**

*passion for clamping*

**Stahlhalter TRAUB A15-25 / TD**  
für vorderen- oder hinteren Seitenschlitten

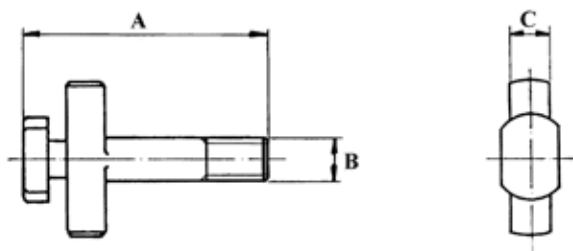
**Tool Holders TRAUB A15-25 / TD**  
for Front or Rear Side Head



Bestell-Nr. order-no.	Maschine machine	Orig. Ersatzteil-Nr. orig. spare part no.	Drehmeißelquerschnitt shank width	Bemerkung notice
U21T.55.R	TRAUB TD26/36	695 150	12x12	geliefert mit - supplied with: U214.21.TD Madenschrauben - Screws M6x10 / M6x16 DIN 916
U21T.55.L	TRAUB TD26/36	695 155	12x12	
U21T.5K	Justierkeil II - <i>adjusting wedge</i>		10x10	zur Reduzierung auf 10x10 <i>to reduce to</i>
U21T.6K	Justierkeil - <i>adjusting wedge</i>	695 152	12x12	
U21T.25.R	TRAUB A15-25	610 099	10x10	
U21T.25.L	TRAUB A15-25	610 100	10x10	

**Anzugschrauben**  
für Stechhalter Art. U21T

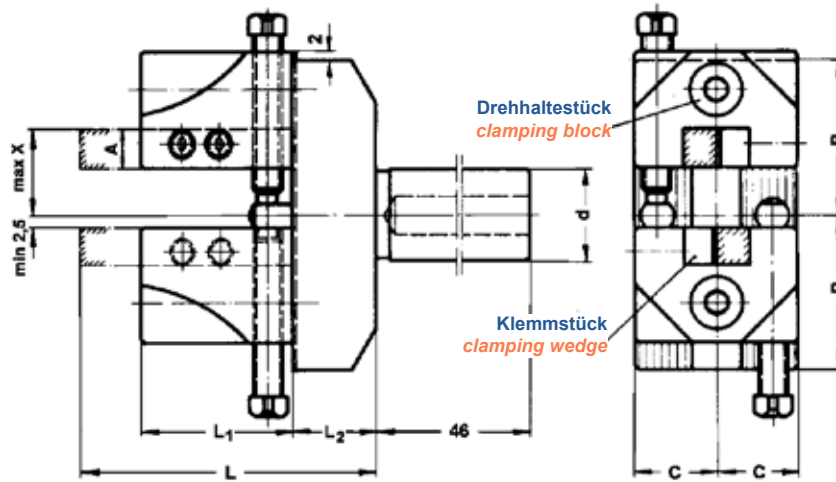
**Pull Studs**  
for Infeed Tool Holders U210 / U21T



Bestell-Nr. order-no.	Maschine machine	Orig. Ersatzteil-Nr. orig. spare part no.	A	B	C
U214.21.TD	TRAUB TD16-26-36	695 154	63	M10	17
U214.21.TDL	TRAUB TD lange Ausführung - <i>long type</i>		75	M10	17

**Drehhalter einstellbar**  
für 2 Dreheinsätze rechts / links

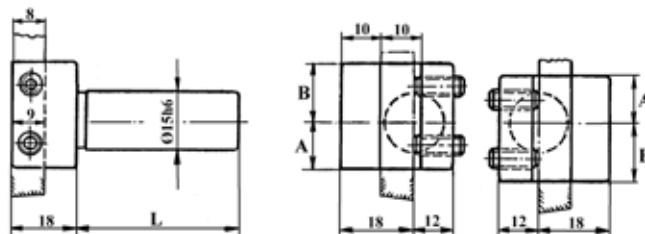
**Turning Holders, Adjustable**  
for 2 Turning Inserts right / left



Bestell-Nr. order-no.	d	B	C	L	L <sub>1</sub>	L <sub>2</sub>	A	Maschine machine	Orig. Ersatzteil-Nr. orig. spare part no.
U234.50.20	3/4"	32	17	63	32	17	8	Traub	

**Dreheinsätze radial**  
Schaftdurchmesser 15 h6 / 18 h6

**Turning Holders radial**  
Shank Diameter 15 h6 / 18 h6

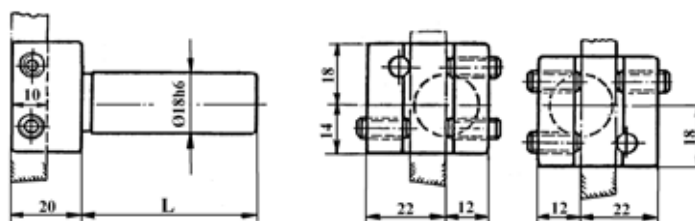


Art. 235.20

linkslauf  
anticlockwise rotation

rechtslauf  
clockwise rotation

Bestell-Nr. order-no.	Maschine machine	Orig. Ersatzteil-Nr. orig. spare part no.	L	A	B	Dreh turning - Ø	
						links - left	rechts - right
U235.20.23	TRAUB TD16 26 36	315 018	60	13	19	0 - 26	



Art. 235.60

linkslauf  
anticlockwise rotation

rechtslauf  
clockwise rotation

Bestell-Nr. order-no.	Maschine machine	Orig. Ersatzteil-Nr. orig. spare part no.	L	Dreh turning - Ø	
				links - left	rechts - right
U235.60.32	TRAUB TB 42/60	315 214	42	0 - 42	
U235.60.33	TRAUB TB 42/60	315 215	60	0 - 42	

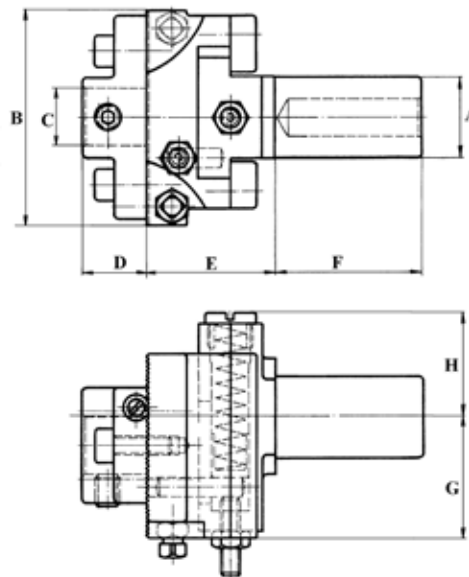
**Ausdrehalter**  
mit Seiten und Höhenverstellung  
Neu: mit Prismatic-Führung - schnelleres Einstellen

**Recessing Tool Holders**  
with Lateral and High Adjustment  
New: With Prismatic Guiding - Quicker Setting

Bestell-Nr. order-no.	Maschine machine	Orig. Ersatzteil-Nr. orig. spare part no.	A	B	C	D	E	F	G	H	I
U276.60.25	TRAUB TB	315 224	33	42	66	46	62	25	1"	66	25

**Verschiebhalter**  
für Links- und Rechtslauf, QI und QII

**Shift Holders**  
Left and Right Hand Rotation, QI and QII



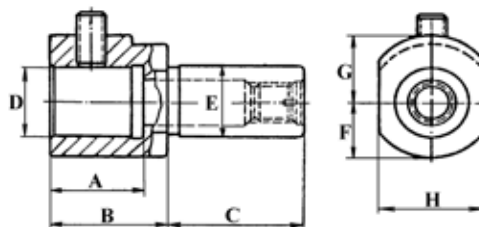
Plandrehweg max. 21 mm

Face turning max. 21 mm

Bestell-Nr. order-no.	Maschine machine	Orig. Ersatzteil-Nr. orig. spare part no.	A	B	C	D	E	F	G	H
U240.50.21	TRAUB TD26	315 031	3/4"	66	18	20	34	46	24	32

**Bohrerhalter**

**Drill Holders**



Bestell-Nr. order-no.	Maschine machine	Orig. Ersatzteil-Nr. orig. spare part no.	A	B	C	D	E	F	G	H
U250.50.21	TRAUB TD16-26-36	TRAUB 315 004	21	39	46	15	3/4"	15	19	22
U250.50.22	TRAUB TD16-26-36	TRAUB 315 047	32	42	60	25	3/4"	22,5	22,5	36
U250.50.22kurz	TRAUB TD16-26-36		32	36	32	25	3/4"	22,5	22,5	36
U250.60.30	TRAUB	315 203	32	40	46	25	1"	20	24	36

### Werkzeughalter für TRAUB mit Wippe

### Tool Holders for TRAUB with Rocker

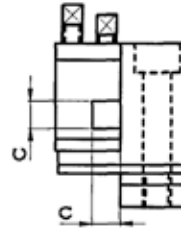
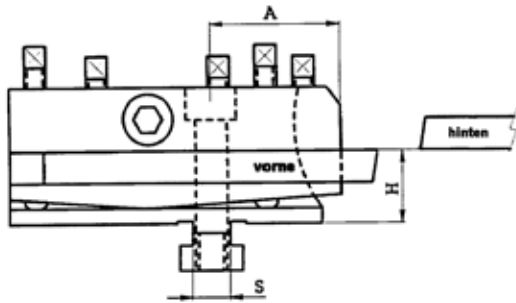


Bild 1

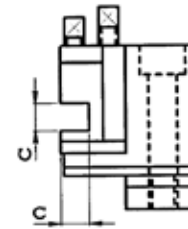


Bild 2

#### Werkzeughalter, justierbar (geschlossen) - tool holders, adjustable (close type)

Bestell-Nr. order-no.	Position	H	A	S	C	Bild	Maschine machine
V300.201	hinten - rear	22	41	12	10x10	1	TRAUB A 15-20-25

#### Werkzeughalter, justierbar (offen) - tool holders, adjustable (open type)

Bestell-Nr. order-no.	Position	H	A	S	C	Bild	Maschine machine
V302.601	vorne - front	40	62	15	12x12	2	TRAUB A 36-42-60 TB42-60

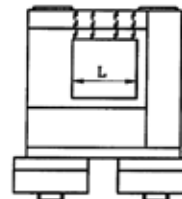
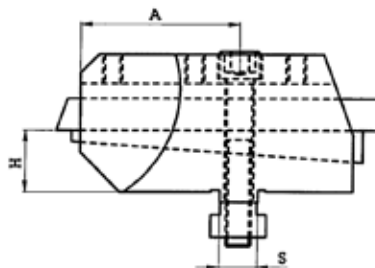
### Keile

### Wedges

Bestell-Nr. order-no.	H	L	für Werkzeughalter for tool holder
V334.101	10	85	
V334.102	20	85	V320.102/202
V334.103	30	85	V320.103/203
V334.602	25	120	V320.602/702

### Werkzeughalter 2 - 3 - 4 - fach

### Tool Holders 2 - 3 - 4 - times

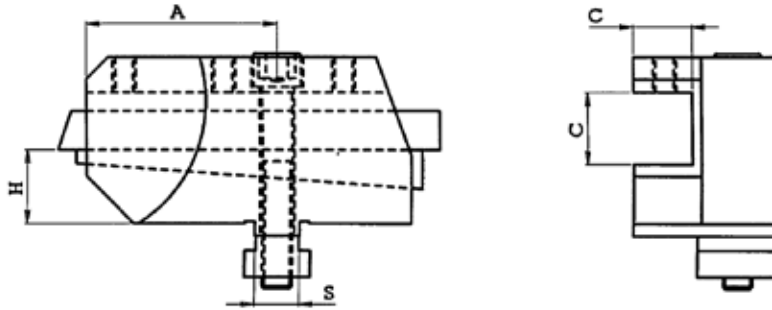


Bestell-Nr. order-no.	Position	H	A	S	L	Maschine machine
V320.103	rechts - right	22	38	12	33	TRAUB A 15-20-25 3-fach 3-times
V320.203	links - left	22	38	12	33	TRAUB A 15-20-25 3-fach 3-times
V320.204	links - left	22	38	12	43	TRAUB A 15-20-25 4-fach 4-times
V320.603	rechts - right	40	65	15	41	TRAUB A 36-42-60 TB42-60 3-fach 3-times
V320.702	links - left	40	65	15	27	TRAUB A 36-42-60 TB42-60 2-fach 2-times
V320.703	links - left	40	65	15	41	TRAUB A36-42-60 TB42-60 3-fach 3-times



**Werkzeughalter, offen**

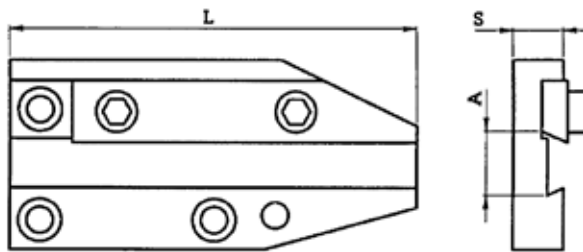
**Tool Holders, open**



Bestell-Nr. order-no.	Position	H	A	S	C	Maschine machine
V330.601	rechts - <i>right</i>	40	65	15	12x12	TRAUB A 36-42-60 TB42-60

**Stechhalter + Drehhalter  
Senkrechtsupport**

**Infeed Tool Holders + Turning Holders  
Vertical Slider**



Bestell-Nr. order-no.	Orig. Ersatzteil-Nr. orig. spare part no.	L	S	A	Maschine machine
V602.601		116	12	17x3 / 17x4	TRAUB A 36-42-60 TB 30
SS TD26-10	695 120	85	24	10x10	TRAUB TD16 - 26 - 36
V600.120	610 281	85	22	10x10	TRAUB A 15-20-25

Kurvenmitnehmer

Cam Disk Holders

Bestell-Nr. order-no.	D	d	Bild	Maschine machine
V500.001	40	30	2	TRAUB TD16 26 36
V500.101	30	25	1	TRAUB A15 20 25
V500.102	45	25	1	TRAUB A15 20 25
V500.103	36	25	1	TRAUB A15 20 25
V500.701	45	35	1	TRAUB TB 42 60

Bild 1

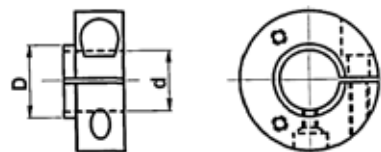
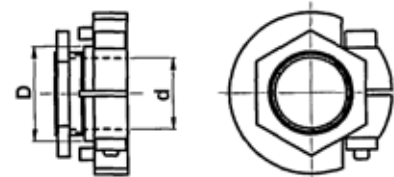
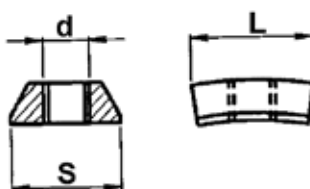


Bild 2



Nutensteine für Kurventräger

Dowels for Tighten Up Cam



Bestell-Nr. order-no.	d	S	L	Maschine machine	Kurventräger tighten up cam
V510.101	M6	18	19,5	TRAUB A15-20-25 / TD 16-26-36	Bohrapparat Gew. <i>bore device thread</i>
V510.601	M8	20	23	TRAUB A36-42-60 / TB30-42-60	Pinole Revolver <i>revolver sleeve</i>

## Kurvenfinger

## Cam Fingers

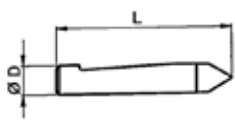


Bild 1

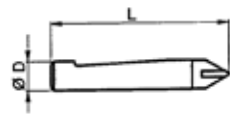


Bild 2

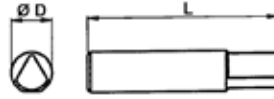


Bild 3

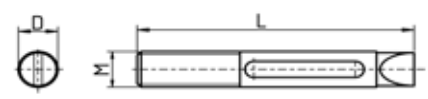
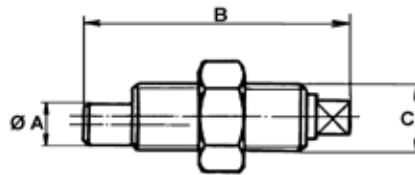


Bild 4

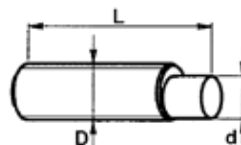
Bestell-Nr. order-no.	d	L	Bild	Schlitten - slide	Orig. Ersatzteil-Nr. orig. spare part no.	Maschine machine
V512.101	10	60	1	Vertikal / Horizontal	620 075	TRAUB A15-20-25 TD16-26-36
V512.105	12	55	3	Langdreheinrichtung		TRAUB A15-20-25
V512.110	10	60	2	Vertikal / Horizontal		TRAUB A15-20-25 TD16-26-36
V512.601	12	75	1	Vertikal / Horizontal		TRAUB A36-42-60
V512.601	12	75	1	Vertikal		TRAUB 30-42-60
V512.605	14	65	3	Langdreheinrichtung		TRAUB A36-42-60
V512.610	12	75	2	Vertikal / Horizontal		TRAUB A36-42-60
V512.611	12	75	2	Vertikal		TRAUB TB30-42-60
V512.701	16	64	1	Horizontal		TRAUB TB30-42-60
V512.104	10	70	4	Vertikal / Horizontal	652 325	TRAUB TC15

## Exzenterbolzen

## Eccentric Bolts



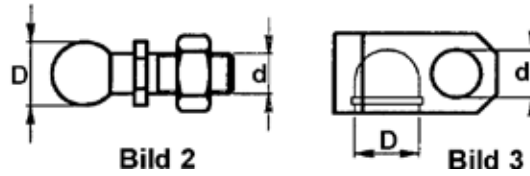
Bestell-Nr. order-no.	Maschine machine	Orig. Ersatzteil-Nr. orig. spare part no.	A	B	C	Exc.
V730.701S	TRAUB TB42-60	655 158+655 156	10	54	M16 x 1	



Bestell-Nr. order-no.	D	d	L	Exc.	Für Maschinenteil for machine part	Maschine machine
V730.001	M10x1	6	40	1	692 891	TRAUB TD16-26-36
V730.101	M12x1	10	43	0,75		TRAUB A15-20-25
V730.101T	M12x1	10	43	0,5	626 299	TRAUB A15-20-25
V730.601	M16x1	12	54	1,5		TRAUB A36-42-60
V730.701	M16x1	12	47	1,5		TRAUB TB30-42-60

Winkelgelenke - Kugelzapfen, Pfannen

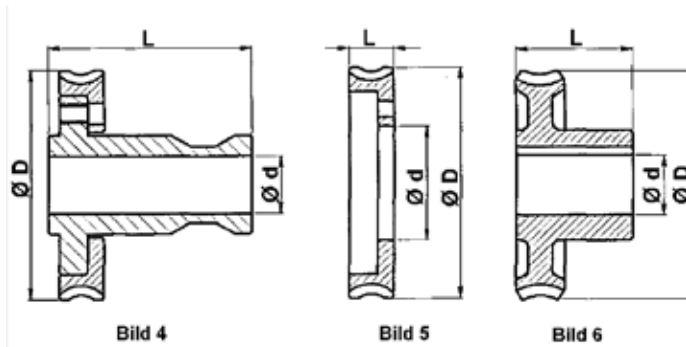
Ball and Socket Joints



Pfanne - socket				Kugel - ball				Für Maschinenteil for machine part	Maschine machine
Bestell-Nr. order-no.	D	d	Bild	Bestell-Nr. order-no.	D	d	Bild		
V734.120	16	12,5	3	V734.111	16	10x1,5	2	Senkrechtsupport vertical slider	TRAUB A15-20-25
				V734.111	16	10x1,5	2	Senkrechtsupport vertical slider	TRAUB A15-20-25

Schneckenräder

Worm Wheels

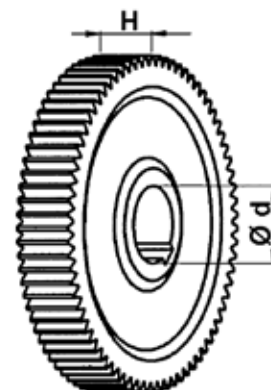


Schneckenräder - worm wheels						Maschine machine
Bestell-Nr. order-no.	d	D	H	R/L	Bild	
V522.001S	30	114	100	Sx	4	TRAUB TD16-26-36
V522.002S	56	114	22	Sx	5	TRAUB TD16-26-36
V522.101	25	96	48	Dx	6	TRAUB A15-20-25
V522.702	35	122	52	Sx	6	TRAUB TB30-42-60

Zahnräder

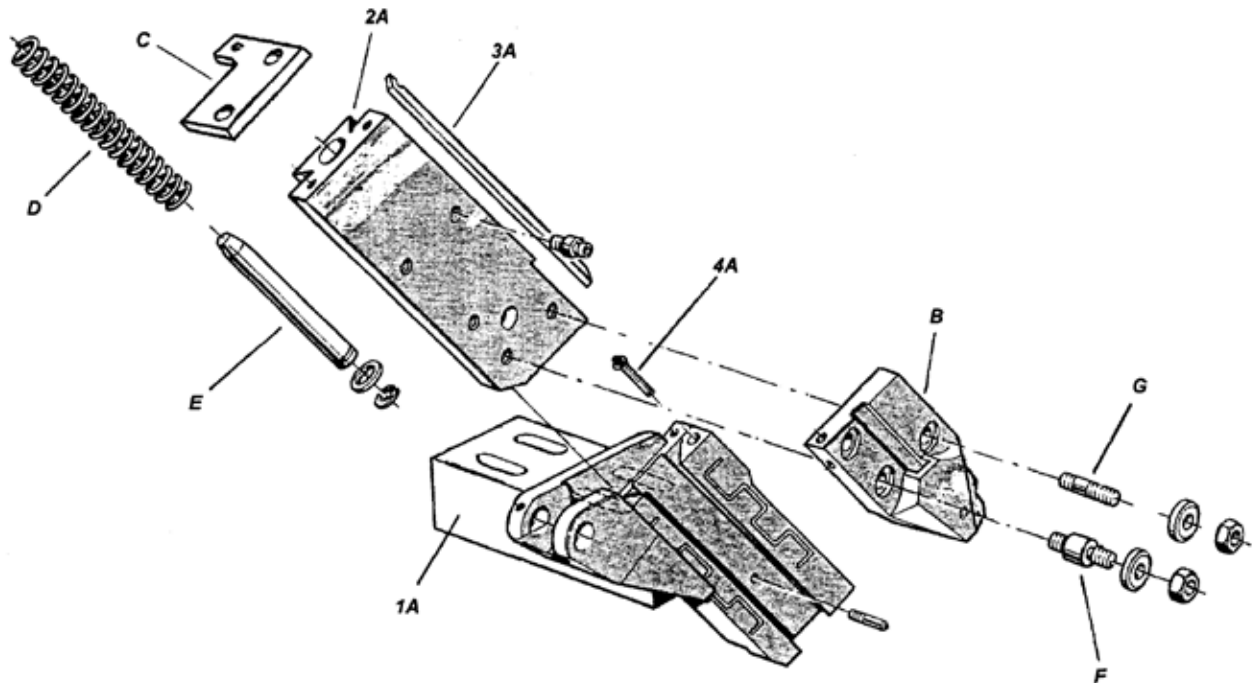
Gear Wheels

TRAUB A-15-20-25				
Bestell-Nr. order-no.	Z	Mod	d	H
V530.025	25	1,25	22	16
V530.035	35			
V530.040	40			
V530.045	45			
V530.050	50			
V530.075	75			
V530.080	80			
V530.090	90			
V530.100	100			



## Senkrechtsupport für TRAUB TD16-26-36

## Vertical Slider for TRAUB TD16-26-36

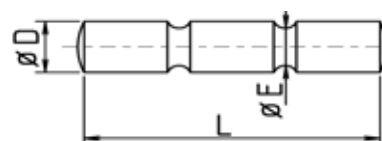


Nr.	Bezeichnung description	Bestell-Nr. order-no.	
		Vorderer Schlitten front side slider	Hinterer Schlitten back side slider
<b>A</b>	<b>Vorderer Senkrechtschlitten; komplett mit allem Teilen „A“</b> <i>vertical slider, complete with all parts "A"</i>		
1A	Schlitten-Grundkörper - <i>base body of slider</i>		
2A	Schlitten - <i>slider</i>		
3A	Keilleiste - <i>V-ledge</i>		
4A	Verstellschraube für Keilleiste - <i>adjusting screw for V-ledge</i>		
B	Werkzeughalter 10x10 - <i>tool holder 10x10</i>	SS TD26-10	SS TD26-10
C	Stirnplatte - <i>front plate</i>	600.030A	600.030P
D	Feder - <i>spring</i>		
E	Federführungsbolzen - <i>spring guiding bolt</i>	738.010	738.010
F	Schwenbolzen für Werkzeughalter - <i>bolt for tool holder</i>	738.011	738.011
G	Spannbolzen für Werkzeughalter - <i>clamping bolt for tool holder</i>	738.012	738.012
B*	Werkzeughalter 12x12 - <i>tool holder 12x12</i>		

## Scherstift für Vorschubgetriebe für TRAUB TD 16-26-36

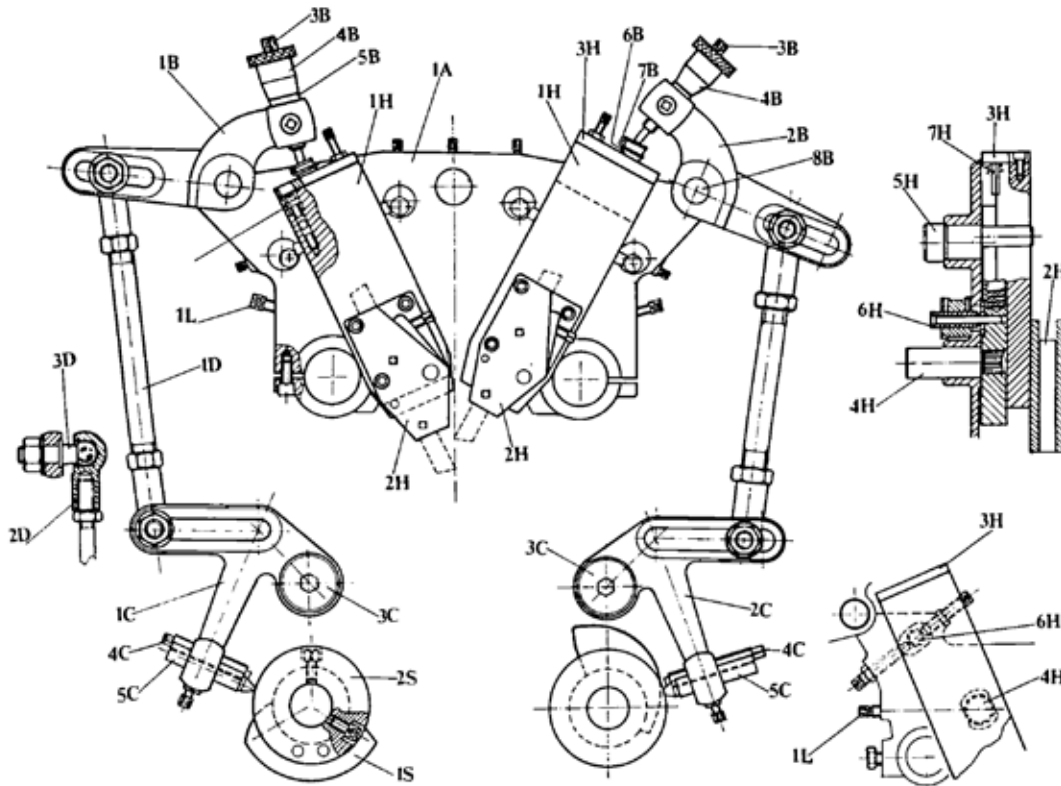
## Shear Splint for Feed Gear for TRAUB TD 16-26-36

Bestell-Nr. order-no.	D	L	E
SSTD691.055	4	32	2
SSTD691.056	4	32	2,2
SSTD691.057	4	32	2,5



## Senkrechtsupport

## Vertical Slider

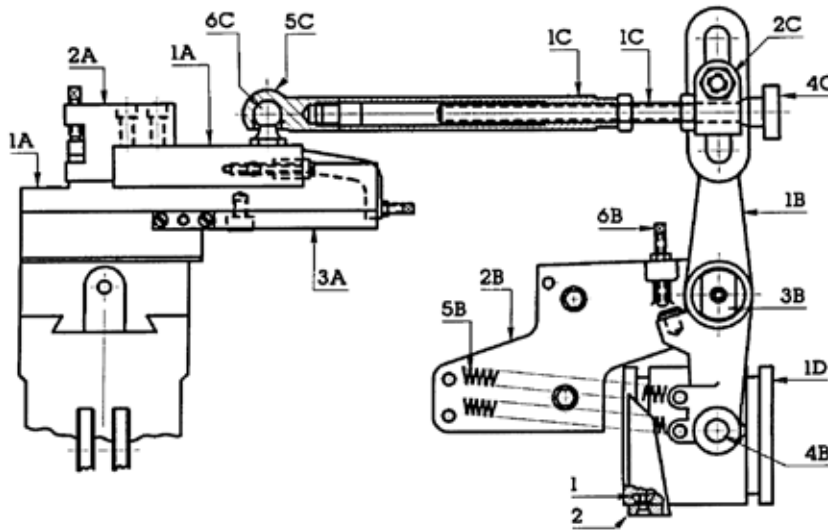


Nr.	Bezeichnung description	Bestell-Nr. order-no. TRAUB A 15-20-25	Bestell-Nr. order-no. TRAUB A 36-42-60
1A	Supportkörper - <i>body, support</i>		
B	Hebel vorn komplett „B” - <i>lever, front, complete "B"</i>		
B	Hebel hinten komplett „S” - <i>lever rear, compl. "B"</i>		
1B	Hebel vorn - <i>lever, front</i>		
2B	Hebel hinten - <i>lever, rear</i>		
3B	Schaftschraube - <i>pole screw</i>	V726.610	V726.610
4B	Skalentrommel - <i>scale drum</i>	V724.610	V724.610
5B	Skalenring - <i>scale ring</i>	V724.611	V724.611
6B	Druckscheibe - <i>pressure washer</i>	V728.101	V728.101
7B	Feder - <i>spring</i>	V720.101	V720.101
8B	Bolzen - <i>bolt</i>		
9B	Klemmschraube für Nonius - <i>clamping screw for nonius</i>	V708.620	V708.626
10B	Bronzescheibe - <i>bronze washer</i>		
C	Hebel vorn komplett „C” - <i>lever, front, complete "C"</i>		
C	Hebel hinten komplett „C” - <i>lever rear, compl. "C"</i>		
1C	Hebel vorn - <i>lever front</i>		
2C	Hebel hinten - <i>lever rear</i>		
3C	Hebelachse - <i>lever axle</i>		
4C	Vierkantschraube - <i>square screw</i>		V708.860
5C	Kurvenbolzen - <i>cam disk bolt</i>	V512.101	
6C	Klemmschraube für Kurvenbolzen - <i>clamping screw</i>	V708.620	V708.824

Nr.	Bezeichnung description	Bestell-Nr. order-no. TRAUB A 15-20-25	Bestell-Nr. order-no. TRAUB A 36-42-60	Bestell-Nr. order-no. TRAUB TB 30-42-60
<b>D</b>	<b>Schubstange komplett „D“ - <i>connecting rod complete "D"</i></b>			
1D	Schubstange - <i>connecting rod</i>			
2D	Winkelgelenk - <i>angle joint</i>			
3D	Kugelpin - <i>ball pin</i>	V734.111		
4D	Kontermutter - <i>counter nut</i>			
<b>H</b>	<b>Schlitten komplett „H“ - <i>slider complete "H"</i></b>	<b>V600.100</b>		
1H	Schlitten vorn und hinten - <i>slider back and front</i>		V600.610	V600.710
2H	Stahlhalter vorn und hinten - <i>steel holder back and front</i>	V600.120		
3H	Druckplatte - <i>pressure plate</i>			
4H	Bolzen - <i>bolt</i>	V600.140		
5H	Bolzen - <i>bolt</i>			
6H	Bolzen - <i>bolt</i>			
7H	Bolzen f. Feder - <i>bolt for spring</i>			
8H	Feder - <i>spring</i>			
9H	Stellschraube - <i>adjustable screw</i>			
1L	Vierkantschraube - <i>square screw</i>			
1S	Kurve - <i>cam disk</i>			
2S	Kurventräger - <i>tighten up cam</i>	V500.102		V500.701

## Langdreheinrichtung

## Plain Turning Slider

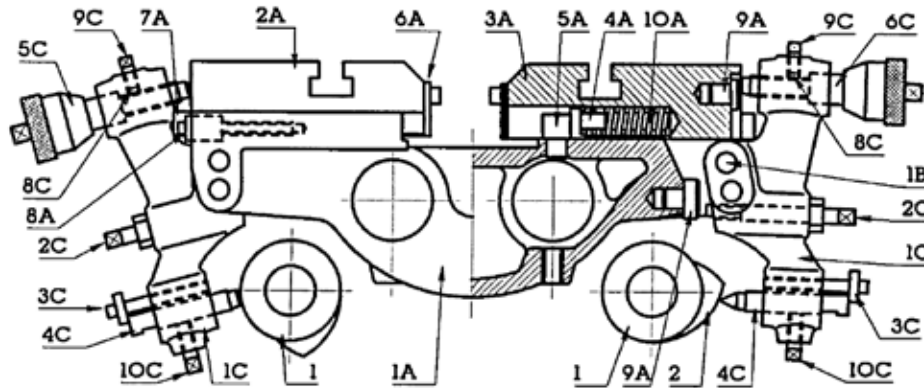


Nr.	Bezeichnung description	Bestell-Nr. order-no. TRAUB A 15-20-25	Bestell-Nr. order-no. TRAUB A 36-42-60	Bestell-Nr. order-no. TRAUB TB 30-42-60
<b>A</b>	<b>Langdreheinrichtung vorn, komplett Teile „A“</b> <i>plain turning slider. complete parts "A"</i>			
1A	Schlitten - <i>slider</i>			
2A	Stahlhalter - <i>steel holder</i>			V620.712
3A	Führung - <i>guidance</i>			
<b>B</b>	<b>Hebel komplett Teile „B“ - <i>slider</i></b>			
1B	Hebel - <i>lever</i>			
2B	Lagerbock - <i>gear block</i>			
3B	Bolzen - <i>bolt</i>			
4B	Kurvenbolzen - <i>cam bolt</i>	V514.100		UTRA-TB
5B	Zugfeder - <i>tension spring</i>	V719.102	V719.602	
6B	Vierkantschraube - <i>square screw</i>		V708.860	
7B	Federhaltebolzen - <i>bolt for spring</i>			
<b>C</b>	<b>Schubstange komplett „C“ - <i>push rod complete "C"</i></b>			
1C	Zwischenstück - <i>adapter</i>	V622.101		
2C	Kugelpfanne - <i>socket joint</i>	V734.120		
3C	Klemmstück - <i>clamping piece</i>			
4C	Skalenschraube - <i>scale screw</i>	V724.610	V724.610	
5C	Winkelgelenk - <i>angle joint</i>			
6C	Kurvenzapfen - <i>cam pin</i>	V734.111		
1D	Kurventräger - <i>tighten up cam</i>			
1	Nutenstein - <i>sliding block</i>		V510.601	
2	Kurve - <i>cam disk</i>			
3	Justierschraube für 4 - <i>adjusting screw</i>			
4	Konisches Lineal - <i>V-ledge</i>			



## Wippe

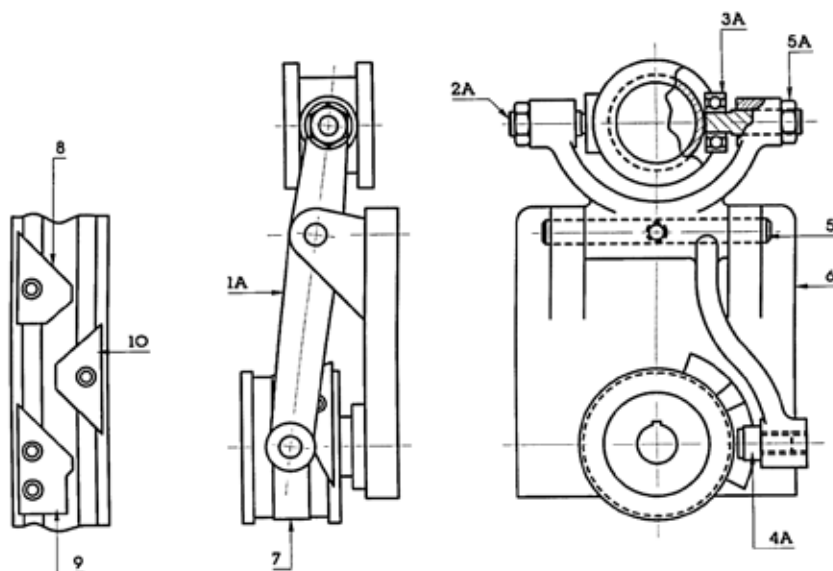
## Crosswise Slider



Nr.	Bezeichnung description	Bestell-Nr. order-no. TRAUB A 15-20-25	Bestell-Nr. order-no. TRAUB A 36-42-60	Bestell-Nr. order-no. TRAUB TB 30-42-60
	<b>Quersupport Teile „A“, „B“, „C“</b> <i>crosswise slider parts "A", "B", "C"</i>			
<b>A</b>	<b>Quersupport komplett Teile „A“</b> <i>crosswise slider parts "A"</i>	<b>V630.101</b>		
1A	Träger - <i>bearing</i>			
2A	Schlitten - <i>slider</i>			
3A	Schlitten - <i>slider</i>			
4A	Bolzen - <i>bolt</i>			
5A	Anschlagbolzen - <i>stop bolt</i>			
6A	Abdeckblech - <i>cover sheet</i>			
7A	Keilleiste - <i>V-ledge</i>			
7A	Keilleiste - <i>V-ledge</i>			
8A	Stellschraube - <i>adjustable screw</i>			
9A	Anschlagbolzen - <i>sliderstop bolt</i>	V728.110	V728.110	V728.110
10A	Druckfeder - <i>pressure spring</i>			
1B	Kurvenhebelachse - <i>axle for cam lever</i>	V736.103		
<b>C</b>	<b>Kurvenhebel komplett - <i>cam lever complete</i></b>			
1C	Kurvenhebel - <i>cam lever</i>			
2C	Vierkantschraube - <i>square screw</i>	V708.776		
3C	Stellschraube - <i>adjusting screw</i>	V713.650	V713.650	V713.650
4C	Kurvenbolzen - <i>cam bolt</i>	V512.101		
5C	Skalentrommel - <i>scale drum</i>	V724.610	V724.610	V724.610
6C	Skalenhülse - <i>scale brush</i>	V724.611	V724.611	V724.611
7C	Schaftschraube - <i>pole screw</i>			
8C	Messingschraube Drm.5 - <i>brass screw</i>			
9C	Klemmschraube f. Nonius - <i>clamping screw for nonius</i>	V708.617	V708.617	V708.617
10C	Klemmschraube f. Kurvenbolzen <i>clamping screw for cam bolt</i>	V708.726	V708.824	V708.824
1	Kurventräger - <i>tighten up cam</i>	V500.101		
2	Kurven - <i>cam disks</i>			
3	Zum Festsetzen des Seitenschlittens - <i>clamping part</i>			

## Zangenspanneinrichtung

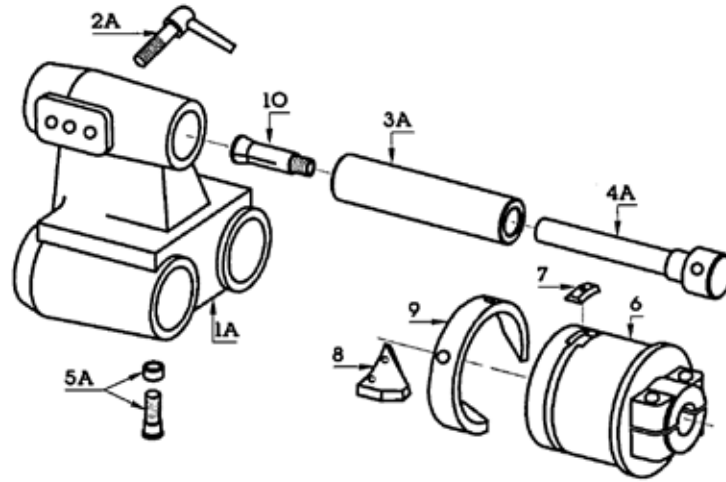
## Open-Close Collet Device



Nr.	Bezeichnung description	Bestell-Nr. order-no. TRAUB A 15-20-25	Bestell-Nr. order-no. TRAUB A 36-42	Bestell-Nr. order-no. TRAUB A 60	Bestell-Nr. order-no. TRAUB TB 30-42	Bestell-Nr. order-no. TRAUB TB 60
<b>A</b>	<b>Werkstoffspannung komplett Teile „A“</b> <b>material clamping complete parts "A"</b>					
1A	Spannhebel - <i>clamping lever</i>					
2A	Exzenterbolzen - <i>eccentric bolt</i>	V730.101				
3A	Kugellager - <i>ball bearing</i>		V716.601			
4A	Rollenbolzen komplett - <i>roller bolt complete</i>		UTRA-TA	UTRA-TA	UTRA-TB	UTRA-TB
5A	Kontermutter - <i>counter nut</i>					
5	Bolzen - <i>bolt</i>	V736.104				
6	Deckel - <i>top cover</i>					
7	Spannkurventrommel - <i>clamping cam drum</i>					
8	Kurvenstück - <i>cam disk part</i>					
9	Kurvenstück - <i>cam disk part</i>	V439.102				
10	Kurvenstück - <i>cam disk part</i>					
	Spannkurvensatz komplett <i>clamping cam set complete</i>					

**Bohrreitstock**

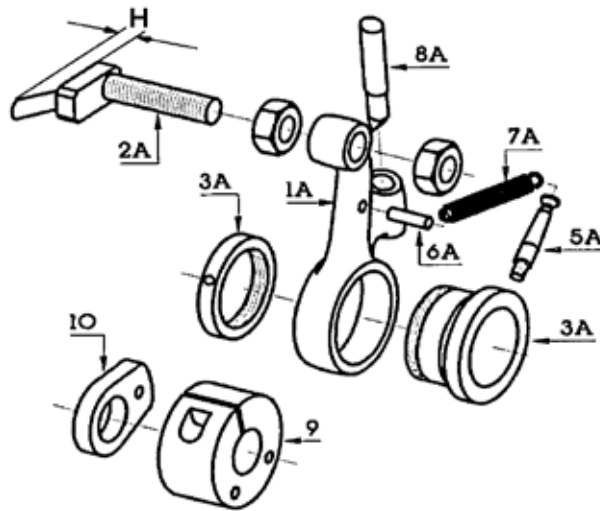
**Tailstock**



Nr.	Bezeichnung description	Bestell-Nr. order-no. TRAUB A 15-20-25	Bestell-Nr. order-no. TRAUB A 36-42-60	Bestell-Nr. order-no. TRAUB TB 30-42-60
A	<b>Bohrreitstock komplett Teile „A“</b> <i>bore tail stock complete parts "A"</i>	V650.100		
1A	Bohrreitstock mit Hebel - <i>bore tail stock with lever</i>			
2A	Klemmhebel - <i>clamping lever</i>			
3A	Pinole - <i>quill</i>	V374.101		
4A	Anzugsstange - <i>clamping pole</i>			
5A	Rollenbolzen komplett - <i>roller bolt</i>			
6	Kurventrommel - <i>cam drum</i>		V510.601	V510.601
7	Nutenstein - <i>sliding block</i>	V510.101	V510.601	V510.601
8	Rückzugkurve - <i>pull back cam</i>	V437.101		
9	Bohrkurve - <i>bore cam</i>	V433.101		
10	Zange - <i>collet</i>			

**Schwinganschlag**  
für TRAUB A 15-20-25-36-42-60

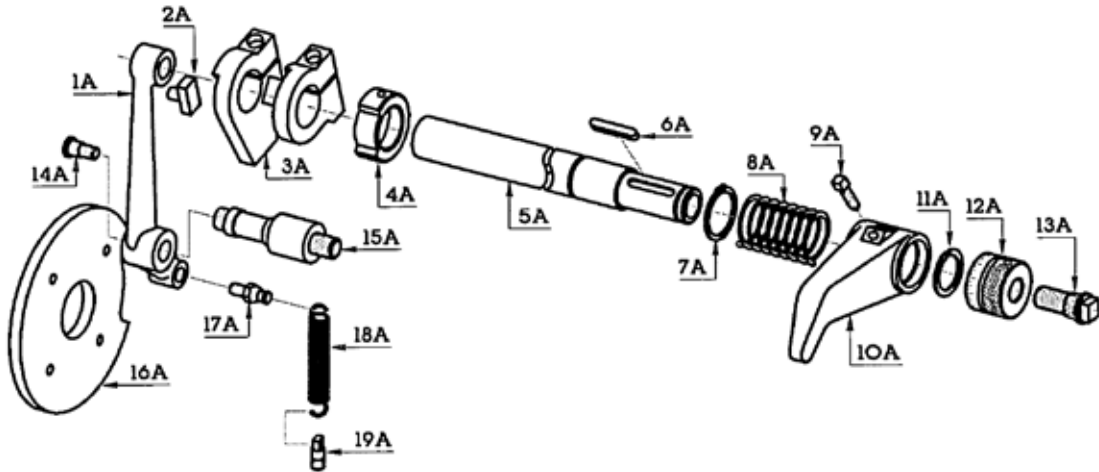
**Stop Device**  
for TRAUB A 15-20-25-36-42-60



Nr.	Bezeichnung description	Bestell-Nr. order-no. TRAUB A 15-20-25	Bestell-Nr. order-no. TRAUB A 36-42-60
A	Anschlag komplett gerade - <i>straight bedstop, complete</i>		
A	Anschlag komplett gebogen - <i>bent bedstop, complete</i>	V660.110	
1A	Hebel gerade - <i>straight lever</i>	V660.101	
1A	Hebel gebogen - <i>bent lever</i>	V660.111	
2A	Anschlaghebel - <i>stop lever</i>	V662.101	
	kurze Ausführung: H = 20 mm - <i>short version</i>		
2A	Anschlaghebel - <i>stop lever</i>	V662.101B	
	lange Ausführung: H = 30 mm - <i>short version</i>		
3A	Führungsbüchse - <i>guiding bush</i>		
5A	Bolzen - <i>bolt</i>		
6A	Bolzen - <i>bolt</i>		
7A	Feder - <i>spring</i>	V719.101	V719.601
8A	Kurvenbolzen - <i>cam bolt</i>	V512.101	
9	Kurvenhalter - <i>cam holder</i>	V500.101	
10	Anschlagkurve - <i>stop cam</i>		
11	Bundmutter - <i>nut</i>		

**Schwinganschlag**  
für TRAUB TB 30-42-60

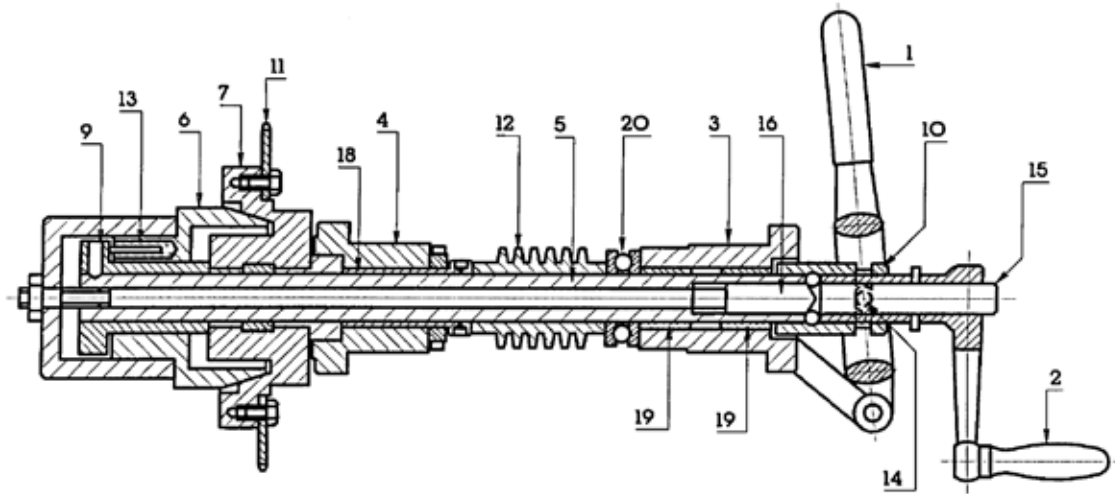
**Vertical Stop Device**  
for TRAUB TB 30-42-60



Nr.	Bezeichnung description	Bestell-Nr. order-no.	Nr.	Bezeichnung description	Bestell-Nr. order-no.
<b>A</b>	<b>Schwinganschlag komplett</b> <i>vertical stop device complete</i>		10A	Anschlag - <i>bed stop</i>	V662.701
1A	Steuerhebel - <i>control lever</i>		11A	Federring - <i>washer spring</i>	
2A	Gleitstück - <i>sliding piece</i>		12A	Skalierschraube - <i>scale screw</i>	
3A	Klemmstück - <i>clamping piece</i>		13A	Stellschraube - <i>adjusting screw</i>	
4A	Anschlagring - <i>stop ring</i>		14A	Kurvenrolle - <i>cam roller</i>	UTRA-A
5A	Welle - <i>spindle</i>		15A	Welle f. Steuerhebel - <i>spindle for control lever</i>	
6A	Paßfeder - <i>feather key</i>		16A	Kurve - <i>cam disk</i>	
7A	Seegerring Dm.30 - <i>Seeger-ring</i>		17A	Bolzen f. Feder - <i>bolt for spring</i>	
8A	Feder - <i>spring</i>		18A	Rückholfeder - <i>retaining spring</i>	
9A	Klemmschraube - <i>clamping screw</i>	V708.830	19A	2. Bolzen f. Feder - <i>2. bolt for spring</i>	

## Schneckenwelle

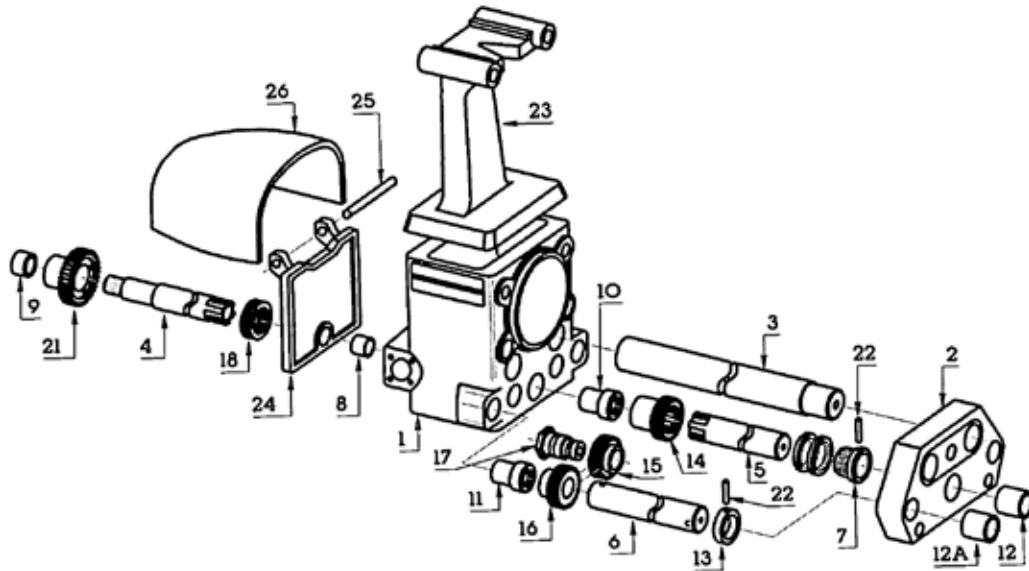
## Friction Group



Nr.	Bezeichnung description	Teilezahl	Bestell-Nr. order-no. TRAUB A 15-20-25	Bestell-Nr. order-no. TRAUB A 36-42-60
1	Kupplungshebel - <i>clutch lever</i>	1	V670.101	
2	Kurbel - <i>crank</i>	1	V672.101	
3	Lager - <i>bearing</i>	1		
4	Lager - <i>bearing</i>	1		
5	Hohlwelle - <i>tubular spindle</i>	1	V676.101	
6-7	Kupplungskegel und Schieber <i>clutch cone and feeder</i>	1		
8	Abschlußkappe - <i>top cap</i>	1		
9	Bundbüchse - <i>shouldered bush</i>	1		
10	Schiebemuffe - <i>sliding sleeve</i>	1		
11	Zahnkranz - <i>gear ring</i>	1	V550.120	
11	Zahnkranz - <i>gear ring</i>	1		
12	Schnecke - <i>worm</i>	1		
13	Druckfeder - <i>pressure spring</i>	4		
14	Gleitstück - <i>sliding block</i>	2	V728.120	
15	Bolzen - <i>bolt</i>	1		
16	Bolzen - <i>bolt</i>	1		
18	Nadellager - <i>needle bearing</i>	1		
19	Nadellager - <i>needle bearing</i>	1		
20	Axial Rillenkugellager - <i>thrust ball bearing</i>	1		
21	Kugeln - <i>balls</i>	3		

## Aufbauten für TRAUB

## Sliding Head Stock - Cam Shaft Holder



Nr.	Bezeichnung description	Bestell-Nr. order-no. TRAUB A 15-20-25	Bestell-Nr. order-no. TRAUB A 36-42-60
1			
2			
3	Führungswelle - <i>guide shaft</i>		
4	Welle - <i>spindle</i>		
5	Steuerwelle Mitte - <i>control shaft middle</i>		
6	Steuerwelle Vorne - <i>control shaft front</i>		
7	Büchse - <i>bush</i>		
8	Büchse - <i>bush</i>		
9	Zwischenbüchse - <i>intermediate bush</i>		
10	Lagerbüchse - <i>bearing bush</i>		
11	Lagerbüchse - <i>bearing bush</i>		
12	Lagerbüchse - <i>bearing bush</i>		
12A	Lagerbüchse - <i>bearing bush</i>		
13	Stellring - <i>adjusting ring</i>		
14	Zahnrad - <i>gear-wheel</i>	V692.110	
15	Zahnrad - <i>gear-wheel</i>	V692.120	
16	Zahnrad - <i>gear-wheel</i>		
17	Zwischenradbolzen - <i>intermediate bolt</i>	V694.101	
17B	Zwischenradbolzen - <i>intermediate bolt</i>		
18	Axial Rillenkugellager - <i>ball bearing</i>		
18A	Axial Rillenkugellager - <i>ball bearing</i>		
19	Axial Rillenkugellager - <i>ball bearing</i>		
21	Schneckenrad - <i>worm wheel</i>	V522.101	
22	Spiralstift - <i>spiral pin</i>		
23	Deckel - <i>top cap</i>		
24	Deckel - <i>top cap</i>		
25	Bolzen - <i>bolt</i>	V736.104	
26	Schutzhaube - <i>protecting cover</i>		

## Wellen und Dorne für Traub

## Pins for Levers and Water Pumps

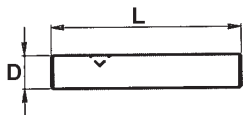


Bild 1

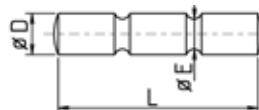


Bild 2

Bestell-Nr. order-no.	D	L	Bild	Für Maschinenteil for machine part	Maschine machine
V736.103	10	83	1	Hebel für Wippe - <i>lever for crosswise slider</i>	TRAUB A 15-20-25
V736.104	12	110	1	Zangenschließeinrichtung - <i>open close collet device</i>	TRAUB A 15-20-25
SSTD691.055	4	32	2	Scherstift für Vorschubgetriebe - <i>pin for feed gear</i> E = 2	TRAUB TD 16-26-36
SSTD691.056	4	32	2	Scherstift für Vorschubgetriebe - <i>pin for feed gear</i> E = 2,2	TRAUB TD 16-26-36
SSTD691.057	4	32	2	Scherstift für Vorschubgetriebe - <i>pin for feed gear</i> E = 2,5	TRAUB TD 16-26-36

## Andruckscheiben

## Tablets



Bild 1

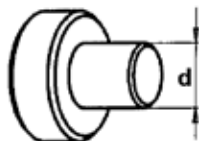


Bild 2

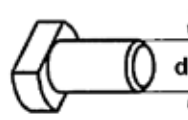


Bild 3

Bestell-Nr. order-no.	d	Bild	Für Maschinenteil for machine part	Maschine machine
V728.101	16	1	Senkrechtschlitten - <i>vertical slide</i>	TRAUB A15-20-25-36-42-60
V728.110	10	2	Waagerechtschlitten - <i>horizontal slide</i>	TRAUB A15-20-25-36-42-60
V728.120	6	3		TRAUB A 15-20-25

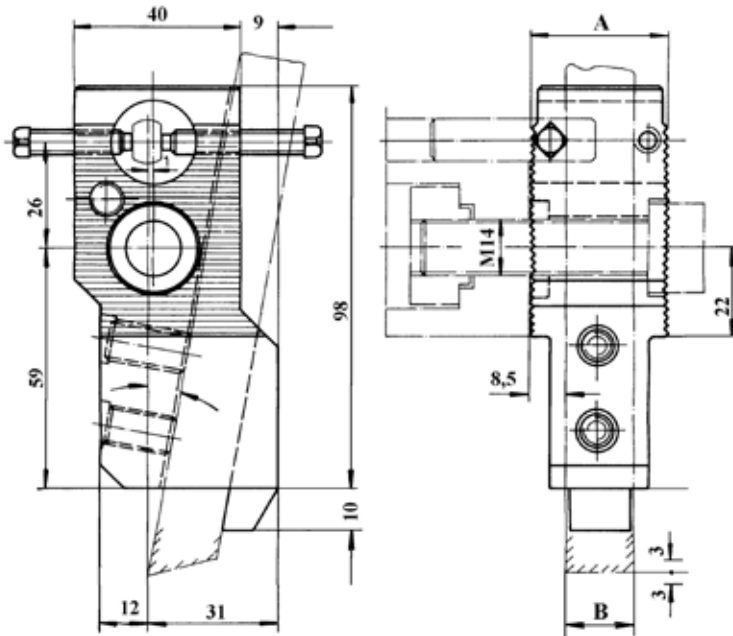


# INDEX

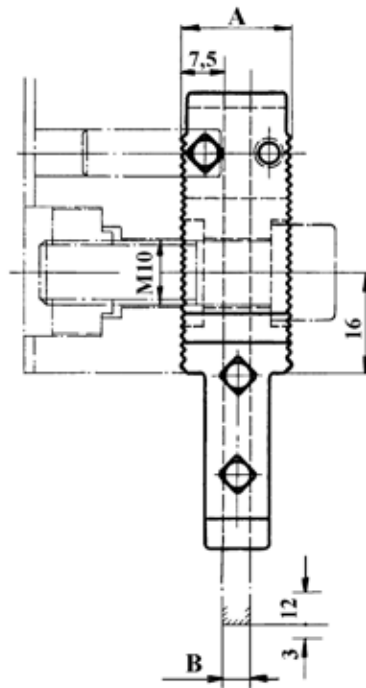
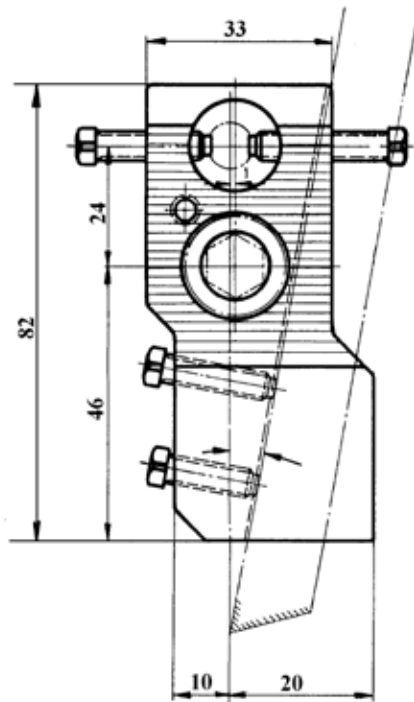


**Stechhalter**  
für Links- und Rechtslauf, QIII und QIV

**Infeed Tool Holders**  
Left and Right Hand Rotation, QIII and QIV



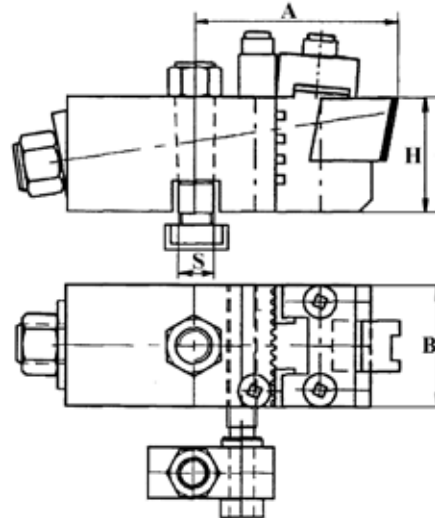
Bestell-Nr. order-no.	Maschine machine	Orig. Ersatzteil-Nr. orig. spare part no.	A	B	Für Schaftquerschnitt for shank
U200.60.60	INDEX B30 - 42 - 60 INDEX C19 - 29	WCO 603.00 WCO 601.00	23	6	16 x 6
U200.60.65	INDEX B30 - 42 - 60 INDEX C19 - 29		23	6	18 x 6
U200.60.70	INDEX B30 - 42 - 60	WCO 401	31	14	14 x 14
U200.60.72	INDEX B30 - 42 - 62	WCO 401	29	12	12 x 12
U200.60.77	INDEX B30 - 42 - 61	WCO 402	37	20	20 x 14
U200.60.80	INDEX B30 - 42 - 60 INDEX C19 - 29	WCO 403.00	42	25	25 x 14
U200.60.26	INDEX B30 - 42 - 60 INDEX C19 - 29 für Abstechhalter Typ ISCAR-Tizit-Arno Griplock, Sumitomo etc.	WCO 670.00	33	1,6 bis 4,0	SGIH 26-... SGFH26-...
U200.50.26	dto für INDEX ER25	W1O 670.00	20		



Bestell-Nr. order-no.	Maschine machine	Orig. Ersatzteil-Nr. orig. spare part no.	A	B	Für Schaftquerschnitt for shank
U201.50.50	INDEX 12 - 18 - 25 INDEX DG12 DO12	WD0 402.00 WD0 401.00	25	10	10 x 10
U201.50.60	INDEX 12 - 18 - 25 INDEX DG12 DO12	WD0 601.00	19	4	10 x 4

**Formstechhalter, flach**  
für Links- und Rechtslauf, QI und QII

*Form Infeed Tool Holders, flat version*  
*Left and Right Hand Rotation, QI and QII*



Bestell-Nr. order-no.	Maschine machine	Orig. Ersatzteil-Nr. orig. spare part no.	A	H	B	S
U204.50.10	INDEX 12 - 18 - 25	W11 401.00	75	30	38	10
U204.60.10	INDEX 36 - 42 - 52 - 60	W31 402.00	85	36	48	14

Incl. Stechhaltestück

*Supplied with infeed tool block*

**Stechhaltestücke**

*Infeed Tool Blocks*

Bestell-Nr. order-no.	Maschine machine	Orig. Ersatzteil-Nr. orig. spare part no.	A	H	B
U204.50.11	INDEX 12 - 18 - 25	W11 401.10	75	30	38
U204.60.20	INDEX C19 - 29	W31 402.30	89	36	48

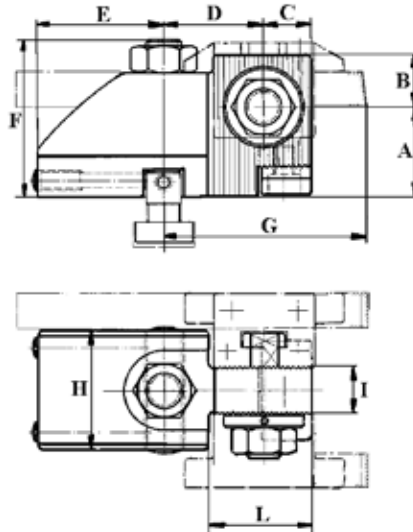
**Anzugsschrauben für Stechhaltestücke  
komplett**

*Screws for Infeed Tool Blocks  
complete*

Bestell-Nr. order-no.	Maschine machine	Orig. Ersatzteil-Nr. orig. spare part no.	
U204.50.S	INDEX 12 - 18 - 25	W11 400.08	für Werkzeughalter <i>for tool holder</i> U204.50.10

**Stechhalter**  
für Links- und Rechtslauf, QI und QII

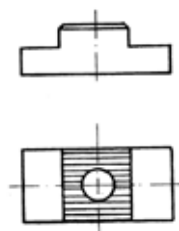
**Infeed Tool Holders**  
Left and Right Hand Rotation, QI and QII



Bestell-Nr. order-no.	Maschine machine	Orig. Ersatzteil-Nr. orig. spare part no.	A	B	C	D	E	F	G	H	I	L
U210.55.10	INDEX DG12	WD 1111.00	30	15	12,7	29	36	32	56	30	12	29
U210.50.10	INDEX 12 - 18 - 25	W11 110.00	30	15	13	33	36	36	65	30	14	31
U210.60.10	INDEX B 30 - 42 - 60	W51 110.00	36	21	19	40	50	50	81	48	20	41
U210.65.10	INDEX C 19 - 29	WC1 111.00	36	21	19	34	50	45	71	48	20	41

**Halteplatten**  
für Stechhalter Art. U210

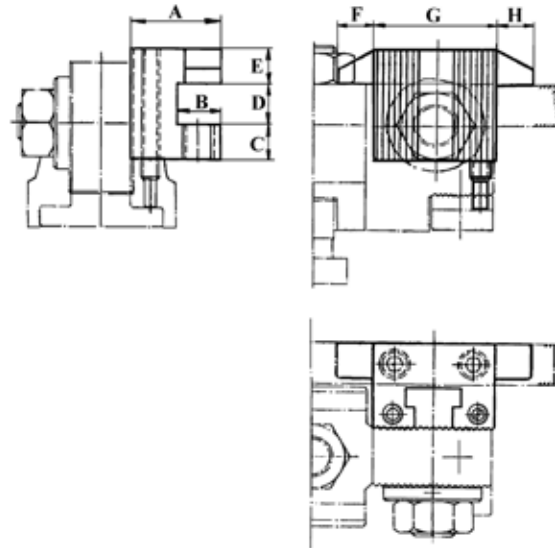
**Fixing Plates**  
for Infeed Tool Holders Ord.-No. U210



Bestell-Nr. order-no.	Maschine machine	Orig. Ersatzteil-Nr. orig. spare part no.
U216.50.10	INDEX 12 - 18 - 25	
U216.60.10	INDEX B 30 - 42 - 60 INDEX C 19 - 29	W51 100.08

**Stechhaltestücke**  
für Links- und Rechtslauf, QI und QII

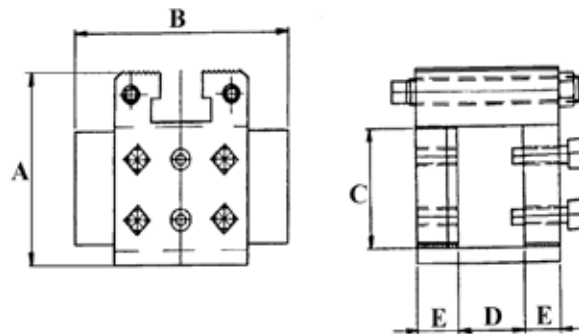
*Infeed Tool Blocks*  
*Left and Right Hand Rotation, QI and QII*



Bestell-Nr. order-no.	Maschine machine	Orig. Ersatzteil-Nr. orig. spare part no.	A	B	C	D	E	F	G	H	Für Schaftquerschnitt for shank
U211.50.10	INDEX 12 - 18 - 25	W11 110.10	19	9	10	10	9	7	34	7	10 x 10
U211.55.10	INDEX DG 12	WD 1111.20	17	8	9	10	7	7	30	7	10 x 8
U211.60.08	INDEX B 30 - 42 - 60 C 19 - 29	W51 110.10	24	7,5	12	19	12	6,5	40	6,5	16 x 6 / 8
U211.60.10	INDEX B 30 - 42 - 60 C 19 - 29	W51 100.10	30	14	12	14	12	12	40	12	14 x 14
U211.65.10	INDEX B 30 - 42 - 60 C 19 - 29	W51 101.10	31	16	12	16	12	12	40	12	16 x 16

**Stechhaltestücke für 2 (3) Stähle**  
für Links- und Rechtslauf, QI und QII

*Infeed Tool Blocks for 2 Insert Holders*  
*Left and Right Hand Rotation, QI and QII*

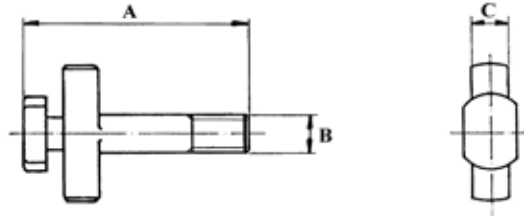


Bestell-Nr. order-no.	Maschine machine	Orig. Ersatzteil-Nr. orig. spare part no.	A	B	C	D	E	Für Schaftquerschnitt for shank
U211D.60.10	INDEX B 30 - 42 - 60 C19 - 29	W51 101.30	51	64	30	19,5	12	14 16
U211D.60.20	INDEX B 30 - 42 - 60 C19 - 29	W51 101.20	44	64	20	19,5	12	14 16

## Anzugschrauben für Stechhalter Art. U210

**Screws**

for Infeed Tool Holder Order-No. U210



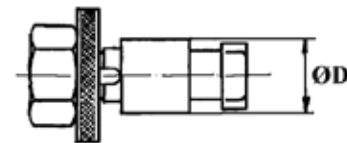
Bestell-Nr. order-no.	Maschine machine	Orig. Ersatzteil-Nr. orig. spare part no.	A	B	C
U214.50.10	INDEX 12 - 18 - 26	W11 110.06	61	M10	10
U214.55.10	INDEX DG 12	WD 100104	52	M10	10
U214.60.10	INDEX B 30 - 42 - 60	W31 400.06	85	M14	14
U214.65.10	INDEX C 19 - 29	WC1 111.00	75	M14	12
U214.50.20	Formstechhalter form enfeed tool holder U204.50.10	W11 400.06	64	M10	10

## Anzugschrauben für Stechhaltestück Art. U211

**Screws**

for Infeed Tool Blocks Ord.-No. U211

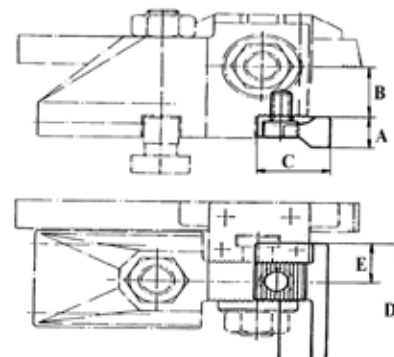
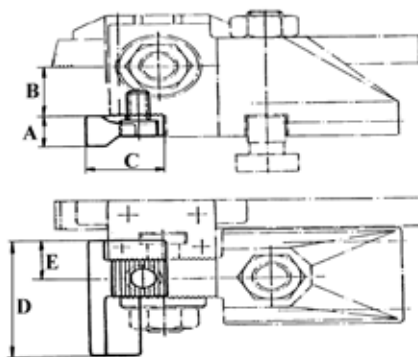
Bestell-Nr. order-no.	Maschine machine	Orig. Ersatzteil-Nr. orig. spare part no.	D
U215.50.10	INDEX 12 - 18 - 25	W11 110.14	14
U215.60.10	INDEX B 30 - 42 - 60	W51 110.04	18
	INDEX C 19 - 29	W51 110.06 415 610.14	



## Andrückwinkel für Links- und Rechtslauf, QI und QII

**Pressure Angle**

Left and Right Hand Rotation, QI and QII



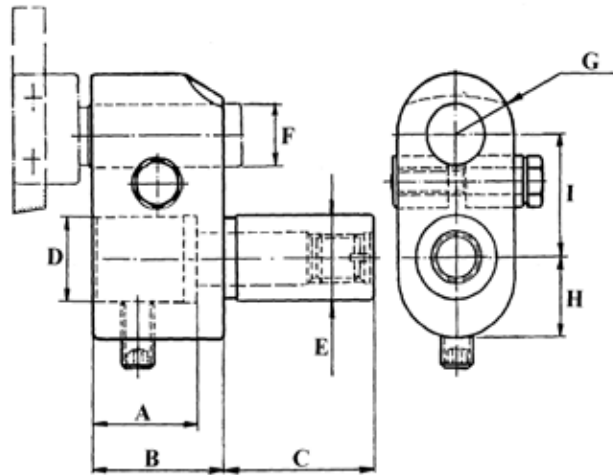
Ausführung QI, für Rechtslauf, Artikel 212  
Version QI, for clockwise rotation  
Bestell-Nr. - Order-no. 212...10

Ausführung QII, für Linkslauf, Artikel 212.1  
Version QII, for anticlockwise rotation  
Bestell-Nr. - Order-no. 212...20

Bestell-Nr. order-no.	Maschine machine	Orig. Ersatzteil-Nr. orig. spare part no.	A	B	C	D	E
U212.50.20	INDEX 12 - 18 - 25	W11 150.00	18	18	28	45	14
U212.60.10	INDEX B 30 - 42 - 60	W51 640.00	15	25	28	58	19
U212.60.20	INDEX C 19 - 29	W51 140.00	15	25	28	58	19

**Bohr- und Drehhalter**

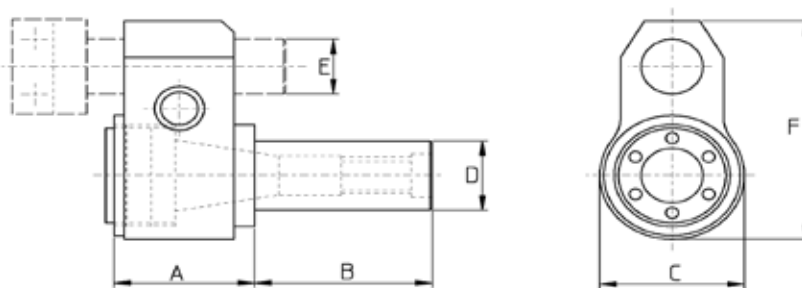
*Drill and Turn Holders*



Bestell-Nr. order-no.	Maschine machine	Orig. Ersatzteil-Nr. orig. spare part no.	A	B	C	D	E	F	G	H	I
U220.50.20	INDEX 12 - 18 - 25 INDEX C19 - 29 INDEX DG12 DO12/6L	W12 300.00	21	26	32	15	3/4"	15	12,5	15,5	29
U220.50.30	INDEX 12 - 18 - 25 INDEX C19 - 29/8L INDEX DG12-DO12/6L	W12 300.0046	21	26	46	15	3/4"	15	12,5	15,5	29
U220.60.30	INDEX B30-42-60-60F/8L INDEX C19 - 29/6L INDEX ER30-42-60-100 INDEX ER30-42-60/8L	W32 300.00	32	40	46	25	1"	18	18	24	36

**Bohr- und Drehhalter mit Zange ER**

*Drill and Turn Holders with ER Collet*

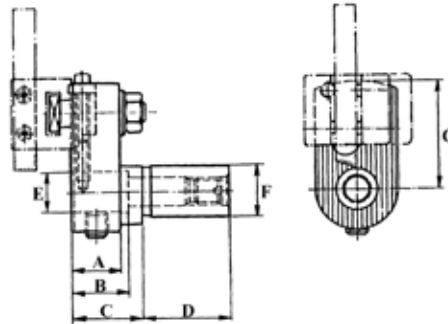


Bestell-Nr. order-no.	Maschine machine	Mutter / Schlüssel nut / spanner	Zange collet	A	B	C	D	E	F
U221.50.20	INDEX 12 - 18 - 25 INDEX C19 - 29/8L INDEX DG12 DO12/6L	ER 20 A E 20 A	ER 20	39	36	40	3/4"	15	72
U221.60.25	INDEX B30-42-60/8L INDEX C19 - 29/6L INDEX E30-42-60-100 INDEX ER30-42-60/8L	ER 25 A E 25 A	ER 25	48	46	48	1"	18	83
U221.60.32	INDEX B30-42-60/8L INDEX C19 - 29/6L INDEX E30-42-60-100 INDEX ER30-42-60/8L	ER 32 A E 32 A	ER 32	48	46	48	35,4	18	83



**Bohr- und Drehhalter, einstellbar**

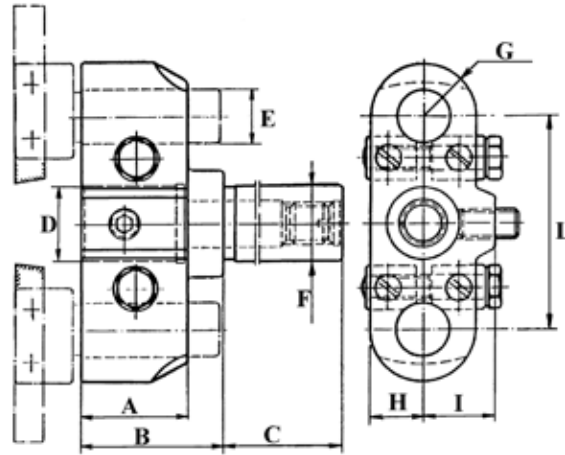
**Drill and Turn Holders, Adjustable**



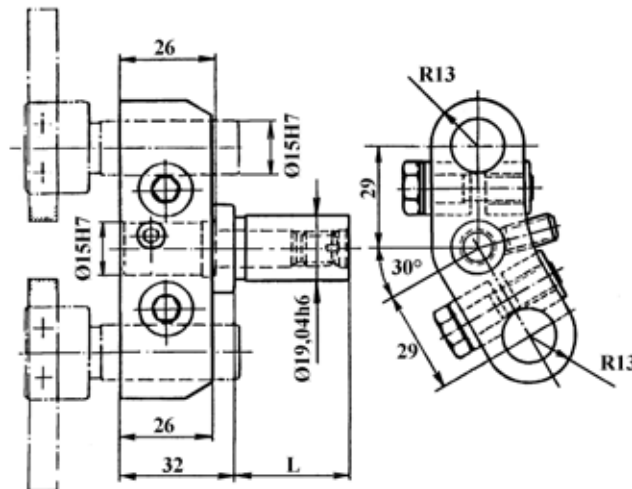
Bestell-Nr. order-no.	Maschine machine	Orig. Ersatzteil-Nr. orig. spare part no.	A	B	C	D	E	F	G
U222.50.20	INDEX 12 - 18 - 25 INDEX C19 - 29/8L INDEX DG12 DO12/6L	W12 351.00 (46)	18	21	26	46	15	3/4"	40
U222.60.30	INDEX B30-42-60-60F/8L INDEX C19 - 29/6L INDEX E30-42-60-100 INDEX ER30-42-60/8L	W32 351.00	30	32	40	50	25	1"	62

Bohr- und Drehhalter für 2 Dreheinsätze

Drill and Turn Holders for 2 Inserts



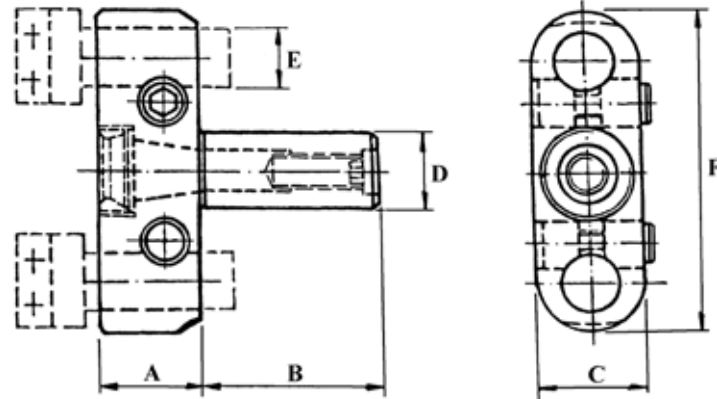
Bestell-Nr. order-no.	Maschine machine	Orig. Ersatzteil-Nr. orig. spare part no.	A	B	C	D	E	F	G	H	I	L
U230.60.30	INDEX C19 -29/6L INDEX E30-42-60-100 INDEX ER30-42-60/8L	W32 320.00	36	48	46	25	18	1"	18	18	24	72



Bestell-Nr. order-no.	Maschine machine	Orig. Ersatzteil-Nr. orig. spare part no.	L
U230.50.20	INDEX 12 - 18 - 25 INDEX C19 - 29/8L	W12 320.00	32
U230.50.30	INDEX 12 - 18 - 25 INDEX C19 - 29/8L	W12 320.0046	46

**Bohr- und Drehhalter**  
für 2 Dreheinsätze, mit Zange ER

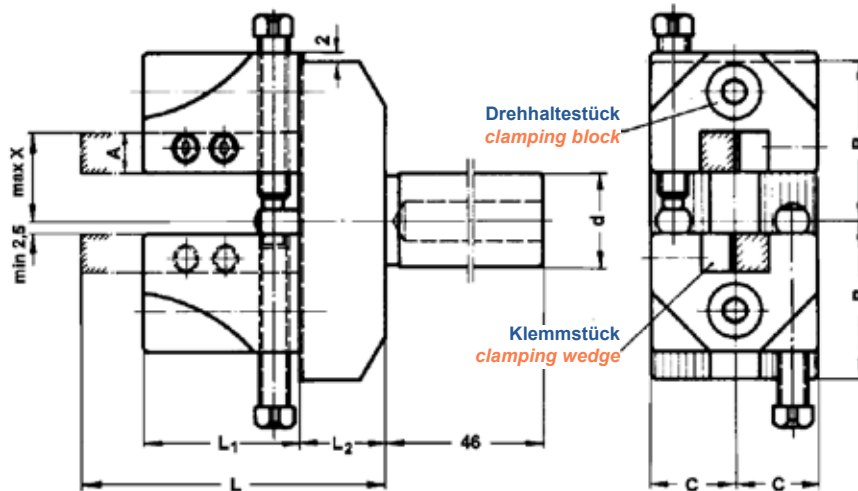
*Drill and Turn Holders*  
*for 2 Inserts, with ER Collet*



Bestell-Nr. order-no.	Maschine machine	Mutter / Schlüssel nut / spanner	Zange collet	A	B	C	D	E	F
U231.50.16	INDEX 12 - 18 - 25 INDEX C19 - 29/8L INDEX DG12 DO12/6L	ER 16 A E16 A	ER 16	28	32	28	3/4"	12	84
U231.60.32	INDEX B30-42-60/8L INDEX C19-29/6L INDEX E30-42-60-100 INDEX ER30-42-60/8L	ER 32 A E 32 A	ER 32	47	50	48	1"	18	116

**Drehhalter, einstellbar**  
für 2 Dreheinsätze rechts / links

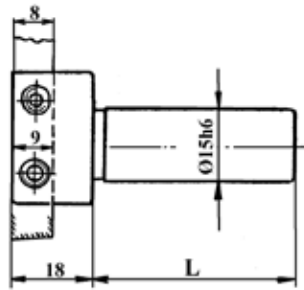
*Turn Holders, Adjustable*  
*for 2 Inserts Right / Left*



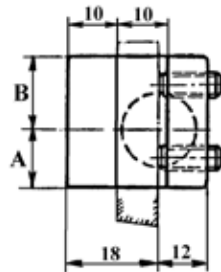
Bestell-Nr. order-no.	d	B	C	L	L <sub>1</sub>	L <sub>2</sub>	A	Maschine machine	Orig. Ersatzteil-Nr. orig. spare part no.
U234.50.20	3/4"	32	17	63	32	17	8	INDEX	W12 6000.0046

**Drehhalter, radial**  
**Schaftdurchmesser 15 h6 / 18 h6**

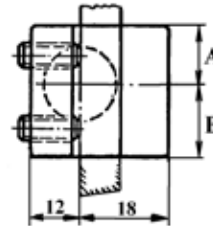
*Turn Holders, radial*  
*Shank Diameter 15 h6 / 18 h6*



Art. 235

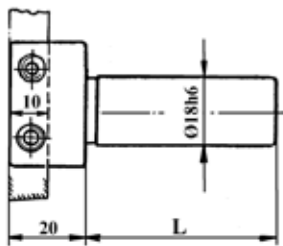


linkslauf  
 anticlockwise rotation

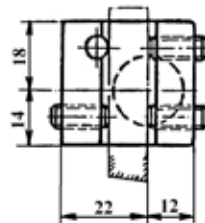


rechtslauf  
 clockwise rotation

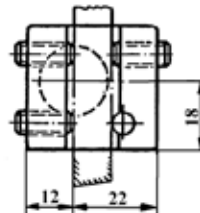
Bestell-Nr. order-no.	Maschine machine	Orig. Ersatzteil-Nr. orig. spare part no.	L	A	B	Dreh - Ø turning	
						links - left	rechts - right
U235.50.20	INDEX 12 - 18 - 25 INDEX C19-29/8L	W12300.1011	42	13	13	0 - 24	0 - 24
U235.50.21	INDEX DG12-DO12/6L	W12300.1012	60	13	13	0 - 24	0 - 24



Art. 235.1



linkslauf  
 anticlockwise rotation

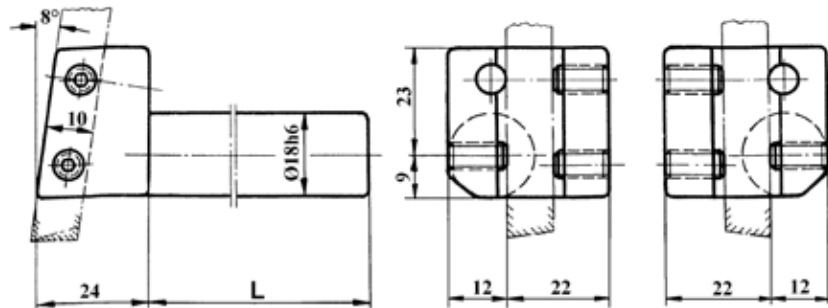


rechtslauf  
 clockwise rotation

Bestell-Nr. order-no.	Maschine machine	Orig. Ersatzteil-Nr. orig. spare part no.	L	Dreh - Ø turning	
				links - left	rechts - right
U235.60.30	INDEX B30-42-60/8L INDEX ER30-42-60/8L	W32300.1011	42	0 - 36	0 - 28
U235.60.31	INDEX E30-42-60-100 INDEX C19 - 29/6L	W32300.1012	70	0 - 36	0 - 28

**Drehhalter, tangential**  
Schaftdurchmesser 15 h6 / 18 h6

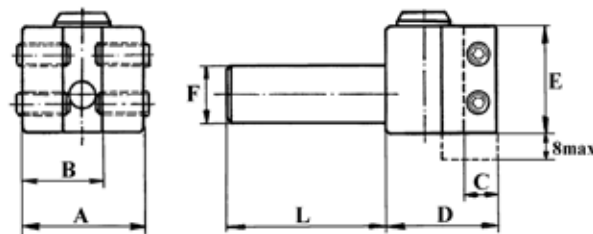
**Turning Holders, Tangential**  
Shank Diameter 15 h6 / 18 h6



Bestell-Nr. order-no.	Maschine / Schaft machine / shank - Ø	Orig. Ersatzteil-Nr. orig. spare part no.	L	Dreh turning - Ø	
				links - left	rechts - right
V120.211	INDEX 12- 25	W12 300.1021	42	0 - 24	
V120.212	Schaft ø 15mm	W12 300.1022	60	0 -24	
V120.811	INDEX C 29/6L	W32 300.1121	50		0 -36
V120.812	Schaft ø 18mm	W32 300.1122	75		0 - 36

**Drehhalter mit Feineinstellung**

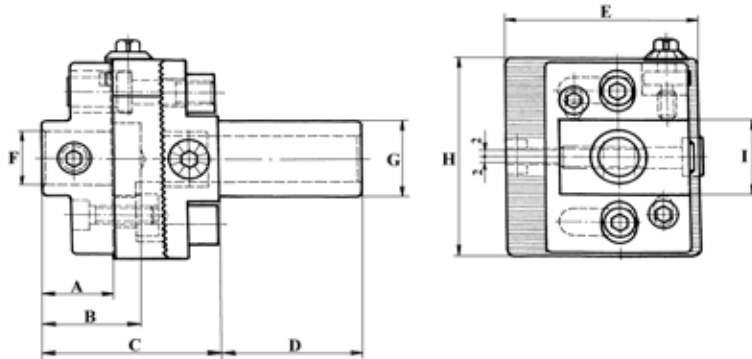
**Turn Holders with Fine Adjustment**



Bestell-Nr. order-no.	Maschine machine	Orig. Ersatzteil-Nr. orig. spare part no.	A	B	C	D	E	F	L
U236.60.30	INDEX B30-42-60/8L INDEX ER30-42-60/8L	W32.300.5011	36	13	9	40,5	35	18	50

**Ausdrehalter  
mit Seiten und Höhenverstellung**

*Recessing Tool Holders  
with Lateral and High Adjustment*



Bestell-Nr. order-no.	Maschine machine	Orig. Ersatzteil-Nr. orig. spare part no.	A	B	C	D	E	F	G	H	I
U275.60.30	INDEX B30-42-60 INDEX C19 - 29/6L	W32 220.00	23	32	56	46	62	18	1"	66	25

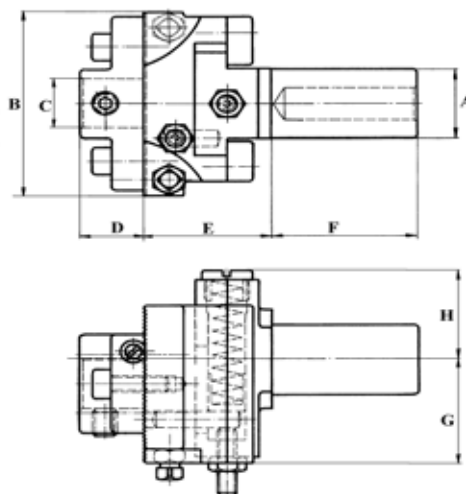
**With Prismatic-Führung - schnelleres Einstellen**

*With Prismatic Guiding - Quicker Setting*

Bestell-Nr. order-no.	Maschine machine	Orig. Ersatzteil-Nr. orig. spare part no.	A	B	C	D	E	F	G	H	I
U276.50.20	INDEX 12 - 18 - 25 INDEX C19 - 29/8L	W12 220.00	20	27	48	46	52	15	3/4"	60	22
U276.60.30	INDEX B30-42-60 INDEX C19 - 29/6L	W32 220	23	32	56	46	62	18	1"	66	25
U276.60.25	INDEX B30-42-60	W32 221	33	42	66	46	62	25	1"	66	25

**Verschiebhalter  
für Links- und Rechtslauf, QI und QII**

*Shift Holders  
Left and Right Hand Rotation, QI and QII*



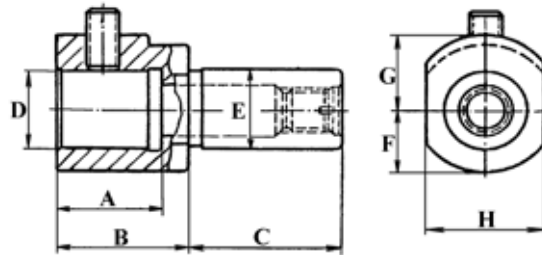
Plandrehweg max. 21 mm

*Face turning max. 21 mm*

Bestell-Nr. order-no.	Maschine machine	Orig. Ersatzteil-Nr. orig. spare part no.	A	B	C	D	E	F	G	H
U240.50.20	INDEX 12 - 18 - 25 INDEX C19 -29/8L	W13701.0046	3/4"	66	15	20	34	46	24	32
U240.60.30	INDEX B30-42-60F/8L INDEX C19 - 29/6L INDEX E30-42-60-100 INDEX ER30-42-60/8L	W33 701.00	1"	68	18	20	40	46	36	32

## Bohrerhalter

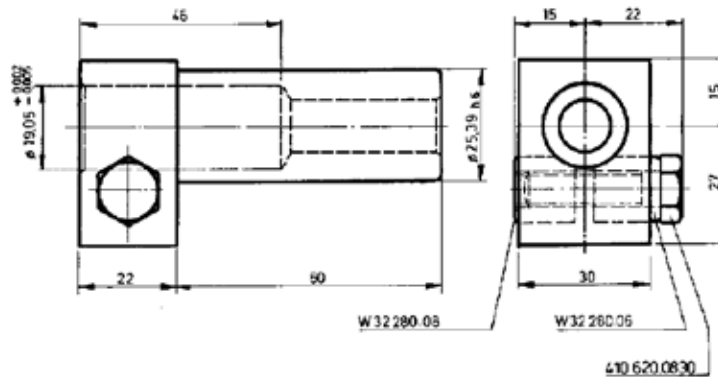
## Drill Holders



Bestell-Nr. order-no.	Maschine machine	Orig. Ersatzteil-Nr. orig. spare part no.	A	B	C	D	E	F	G	H
U250.50.20	INDEX 12 - 18 - 25	W12 100.00	21	26	32	15	3/4"	13	17	25
U250.50.18	INDEX 12 - 18 - 25		21	26	32	18	3/4"	13	17	25
U250.60.30	INDEX 30-42-60/8L INDEX C19 - 29/6L	W32 100.00	32	40	46	25	1"	20	24	36
U250.90.40	INDEX B60	W52 100	40	50	60	30	1 1/4"	28	28	56
U250.90.30	INDEX B60	W52	32	40	46	25	1 1/4"	20	24	36
U250.60.31	INDEX B60	W32 110.00	42	16	46	15	1"	18	18	28

## Ausgleichshalter - Reduzierung

## Adjusting Holders - Reduction



Bestell-Nr. - order-no.	Maschine - machine	Orig. Ersatzteil-Nr. - orig. spare part no.
U251.60.20	INDEX B42 - 60 INDEX C19-29/6L	W35 260.00

**Kurvengleitstücke (Schaltnocken)**

*Cam Sliding Pieces*



Art.Nr.: xxx.xx.10

xxx.xx.20



Art.-Nr.: xxx.xx.30

xxx.xx.40

	Bestell-Nr. order-no.	Maschine machine	Orig. Ersatzteil-Nr. orig. spare part no.
	U292.50.10		A31941
	U292.50.20	INDEX 12 - 18 - 25	A32100
	U292.50.30	INDEX C19 - 29	A31950
<b>Schraube - screw</b>	U2028-29		A31971
	U292.60.10		A72100
	U292.60.20		A71941
	U292.60.30	INDEX B30-42-60	A71950
	U292.60.40		A71960
<b>Schraube - screw</b>	U2028-42		B23151

**Kurvengleitstücke (Schaltnocken)**

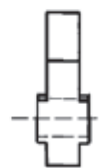
rechts + links verwendbar

*Cam Sliding Pieces*

*Usable Right and Left*



Art.Nr.: xxx.xx.12



Art.-Nr.: xxx.xx.34

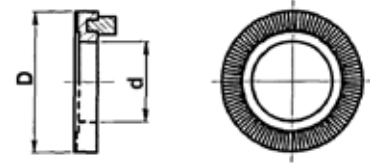
Bestell-Nr. order-no.	Maschine machine	Orig. Ersatzteil-Nr. orig. spare part no.
U292.50.12		A31941
	INDEX 12 - 18 - 25	A32100
U292.50.34	INDEX C19 - 29	A31950
		A31960
U292.60.12	INDEX B30-42-60	A72100
		A71941



## Kurvenmitnehmer

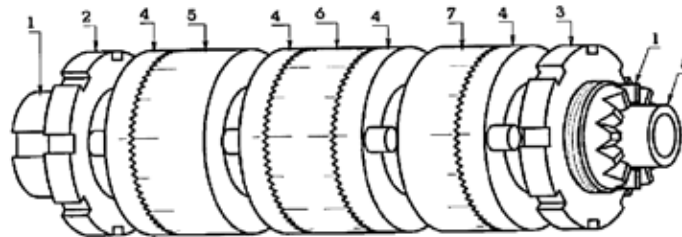
## Cam Disk Holders

Bestell-Nr. order-no.	D	d	Maschine machine
V500.340	56	32	INDEX 12 18 25
V500.340B	66	42	INDEX 12 18 25
V500.345	60	36	INDEX C19 29



## Kurventräger, komplett

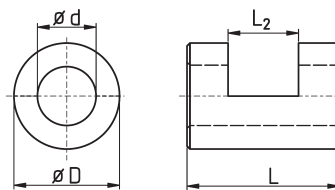
## Cam Disk Shafts, complete



Nr.	Beschreibung - designation	Bestell-Nr. - order-no. INDEX C 19-29	Bestell-Nr. - order-no. INDEX B 30-42-60
	Kurvenwelle komplett - <i>cam disk shaft complete</i>	V686.345	
1	Welle - <i>spindle</i>		V686.360A
2	Spannmutter mit Linksgewinde <i>clamping nut with left hand thread</i>	V593.345S	
3	Spannmutter mit Rechtsgewinde <i>clamping nut with right hand thread</i>	V593.345D	V593.360D
4	Gezahnter Kurvenmitnehmer - <i>geared cam disk holder</i>	V500.345	
5	Zahnscheibe links - <i>geared washer left</i>		
6	Doppelzahnscheibe - <i>double geared washer (left + right)</i>		V500.360E
8	Führungshülse - <i>guide tube</i>		V686.360B

## Spannbüchsen für Werkzeughalter System INDEX / TRAUB

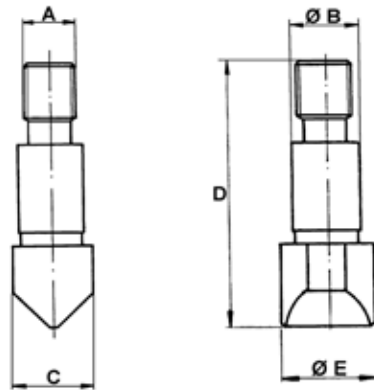
## Clamping Bushes for Tool Holders System INDEX / TRAUB



Bestell-Nr. order-no.	D	L	L <sub>2</sub>	d	stg. step
V993.112. . .	12	20	10	2 - 9	0,1
V993.115. . .	15	24	10	2 - 12	0,1
V993.118. . .	18	26	12	6 - 12	1
V993.118.150	18	26	12	15	

**Klinkbolzen**

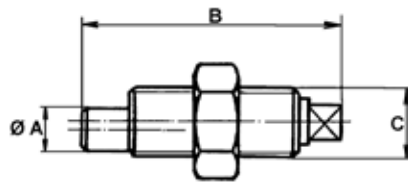
*Pawl Bolts*



Bestell-Nr. order-no.	Maschine machine	Orig. Ersatzteil-Nr. orig. spare part no.	A	B	C	D	E
U294.50.20	INDEX 12 - 18 - 25	A31 161	M8 x 1,25	10	12	42	14
U294.60.20	INDEX 24 - 36 - 52 INDEX B30-42-60	A71 151	M10 x 1,5	12	16	48	18

**Exzenterbolzen**

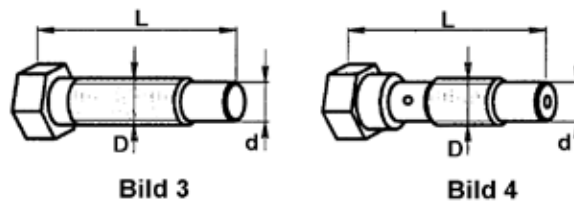
*Eccentric Bolts*



Bestell-Nr. order-no.	Maschine machine	Orig. Ersatzteil-Nr. orig. spare part no.	A	B	C
U293.50.20	INDEX 12 - 18 - 25	A31090	8	54	M14 x 1
U293.60.20	INDEX 24 - 36 - 52		10	60	M16 x 1
U293.60.30	INDEX B30 - 42 - 60	B18 161	10	38	M14 x 1
U293.60.40	INDEX B30 - 42 - 60		10	52	M14 x 1
U293.65.30	INDEX C19 - 29	C18 161	8	36	M12 x 1
U293.65.40	INDEX C19 - 29	C22 211	8	46	M12 x 1

**Exzenterbolzen, Zapfenschrauben**

*Eccentric Bolts, Pin Screws*

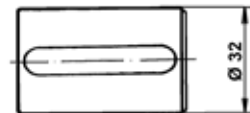
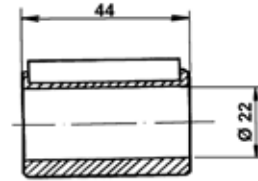


Bestell-Nr. order-no.	D	d	L	Exzenter eccentric	Bild	Für Maschinenteil for machine-part	Maschine machine
V730.347A	M10x1	8	49		3		INDEX C19
V730.347B	M10x1	8	45		4		INDEX C19

## Bronzebüchsen

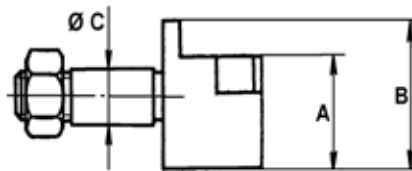
## Bronze Sleeves

Bestell-Nr. order-no.	Maschine machine	Orig. Ersatzteil-Nr. orig. spare part no.
U295.60.30	INDEX B30 - 42 - 60	B21 101



## Auslösebolzen

## Cleaning Bolts



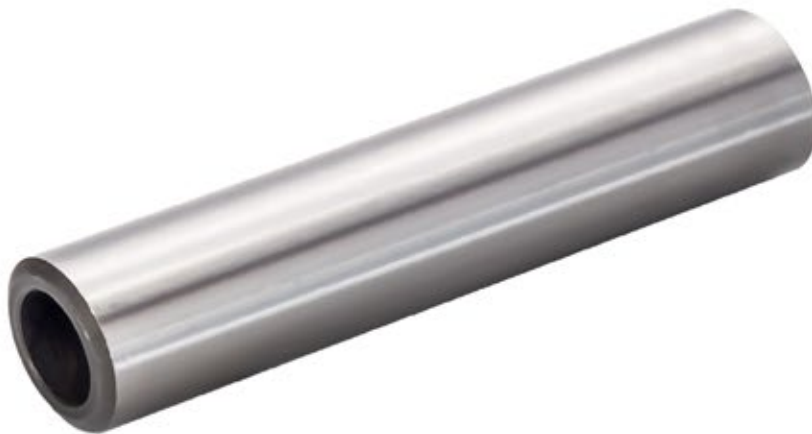
Bestell-Nr. order-no.	Maschine machine	Orig. Ersatzteil-Nr. orig. spare part no.	A	B	C
U297.50.20	INDEX 12 - 18 - 25	AA5731	16	21	8
U297.60.30	INDEX B30-42-60	B35 361	18	18	10
U297.65.30	INDEX 24 - 36 - 52 INDEX C19 - 29	A7492	18	24	10

## Ersatzteile für INDEX MS 25

## Spare Parts for INDEX MS 25

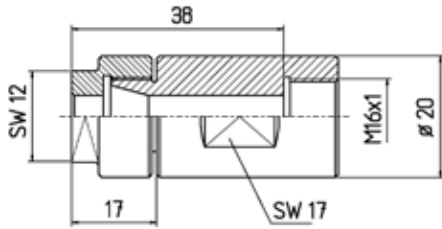
Bezeichnung - description	Orig. - Nr. - orig. no.		Unsere Bestell - Nr. our order-no.
<b>Werkstoffanschlag - bar stop</b>			
Bolzen - <i>bolts</i>	M30 162.5010	Werkstoffanschlag - <i>bar stop</i>	U2015-MSW
Scheibe - <i>washer</i>	M30421.90	dto. Abm. 20x12x3	U2011-MSW
Kurvenrollen - <i>cam rolls</i>	A74140	dto. 24x12x2	U2010-MSW
<b>Querschlittenantrieb - cross slide gear</b>			
Mutter - <i>nuts</i>	41 5608.1010	Mutter - <i>nut</i> 10 x I - 936	
Buchse - <i>bushes</i>	M300 52.70	dto.	U2010-MSQ
jeweils incl. passendem - <i>incl. adequate</i>			
Bolzen - <i>bolts</i>	M32 281.60	Ers. Teil f. Rundbolzen <i>spare part for bolt</i> M30091.40	U2015-MSQ
<b>Rollen / Rollenbolzen - rolls / roller bolts</b>			
Rolle - <i>rolls</i>	M 30101	25 x 8	U2010-MSG
Rolle - <i>rolls</i>	AB 9270	16 x 8	U2010-MSK
Rollenbolzen - <i>roller bolts</i>	M 30103.10	8 x 52	U2015-MS
Rollenbolzen - <i>roller bolts</i>			
<b>Querschlittenantrieb - cross slide gear</b>			
Anschlagkappe - <i>arrester capping</i>	SK 1010.0120		UMSSK 5
Anschlagkappe - <i>arrester capping</i>	ähnlich SK 1010.0120	Kopf 10 mm verlängert <i>head 10 mm extended</i>	UMSSK 10
Anschlagkappe - <i>arrester capping</i>	ähnlich SK 1010.0120	Kopf 15 mm verlängert <i>head 15 mm extended</i>	UMSSK 15

## STROHM



Bohrverlängerungen für STROHM M105-125

Drill extensions for STROHM



Bestell-Nr. - order-no.	
WT16F8	
incl. Mutter	nut included

Nutensteine für Kurventräger

Dowels for Tighten Up Cams



Bild 1

Bild 2

Bestell-Nr. order-no.	d	S	L	Bild	Maschine machine	Kurventräger tighten up cam
V510.301	M5	11,2	14	1	STROHM 75-105-125	Dreispiindelapparat - <i>3-spindle device</i>
V510.302	M6	11,2	14	1	STROHM 75-105-125	Dreispiindelapparat - <i>3-spindle device</i>



